

Daily market
Report
28 May 26



South African Rand (ZAR)

USD/ZAR Weekly: Medium-term ZAR bullish < R16.99



USA Crude Light Sweet Oil

Continuous Daily: Contract status bullish > \$68



USA Corn

Jul26 Daily: Contract status bearish < \$4.72



White Maize

Jul26 Daily: Contract status bearish < R3800



LSEG

Yellow Maize

Jul26 Weekly: Contract status bearish < R3700



LSEG



USA Soya

Jul26 Daily: Contract status bullish > \$11.20



Suns

Jul26 Daily: Contract status bearish < R9200

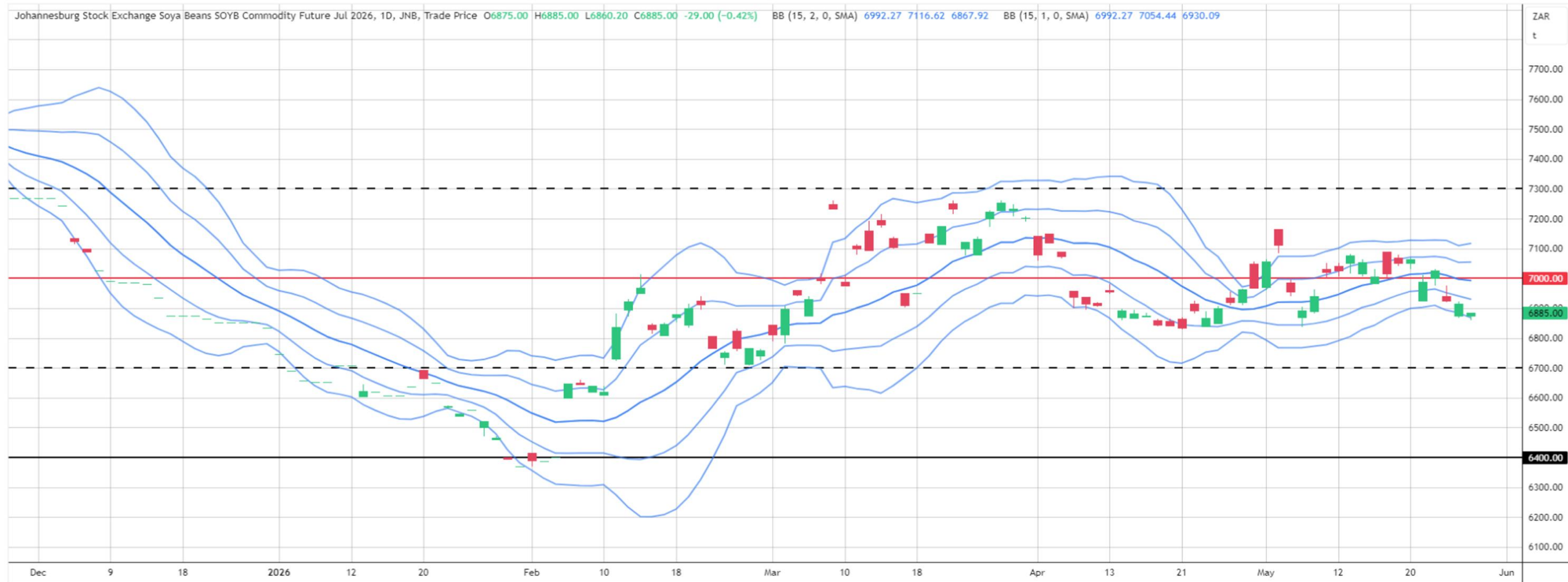


LSEG



SA Soya

Jul26 Daily: Contract status bearish < R7000

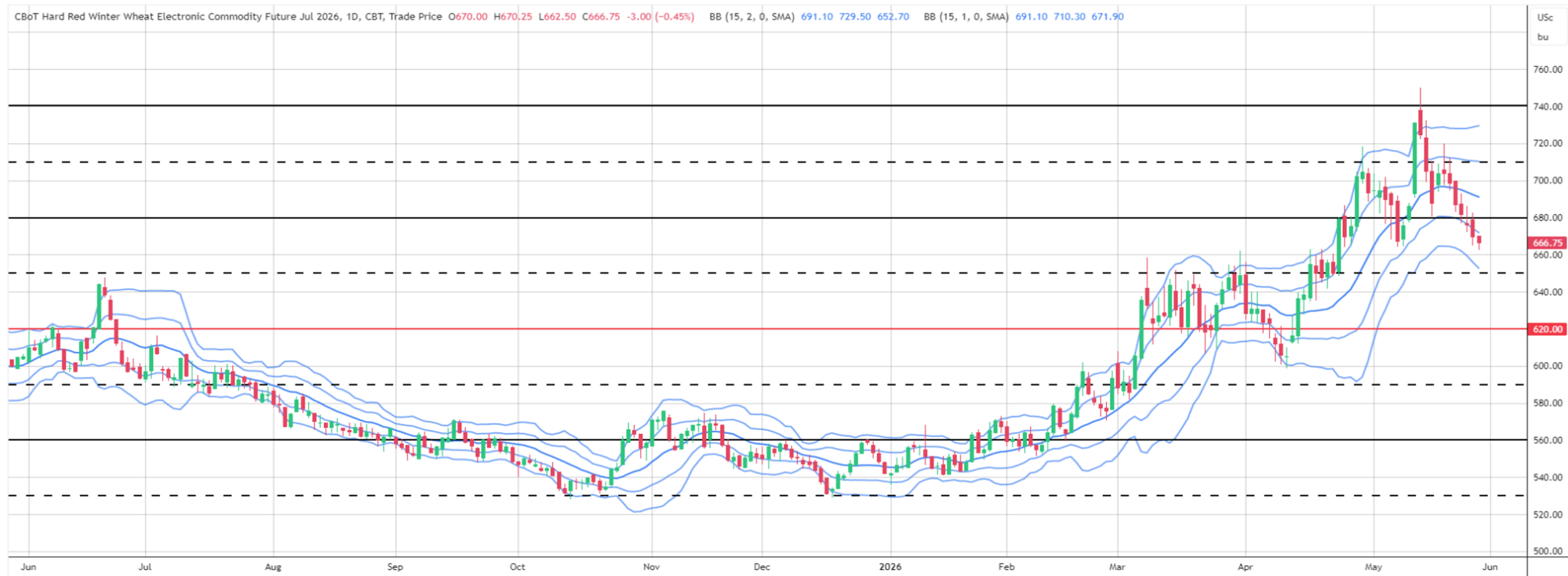


LSEG



US Kansas Wheat

Jul26 Daily: Contract status bullish > \$6.20



LSEG



SA Wheat

Jul26 Daily: Contract status bearish < R6000



LSEG



Weather

SA Medium-term Precipitation Forecasts

GEFS week1 Ensemble Mean Total Rainfall (mm)

Period: 00z28May2026 - 00z03Jun2026

