

Daily market
Report
14 May 26



South African Rand (ZAR)

USD/ZAR Weekly: Medium-term ZAR bullish < R17.04



LSEG



USA Crude Light Sweet Oil

Continuous Daily: Contract status bullish > \$68



LSEG

USA Corn

Jul26 Daily: Contract status bullish > \$4.72



LSEG



White Maize

Jul26 Daily: Contract status bearish < R3800



Yellow Maize

Jul26 Weekly: Contract status bearish < R3720



USA Soya

Jul26 Daily: Contract status bullish > \$11.20



Suns

Jul26 Daily: Contract status bearish < R9200

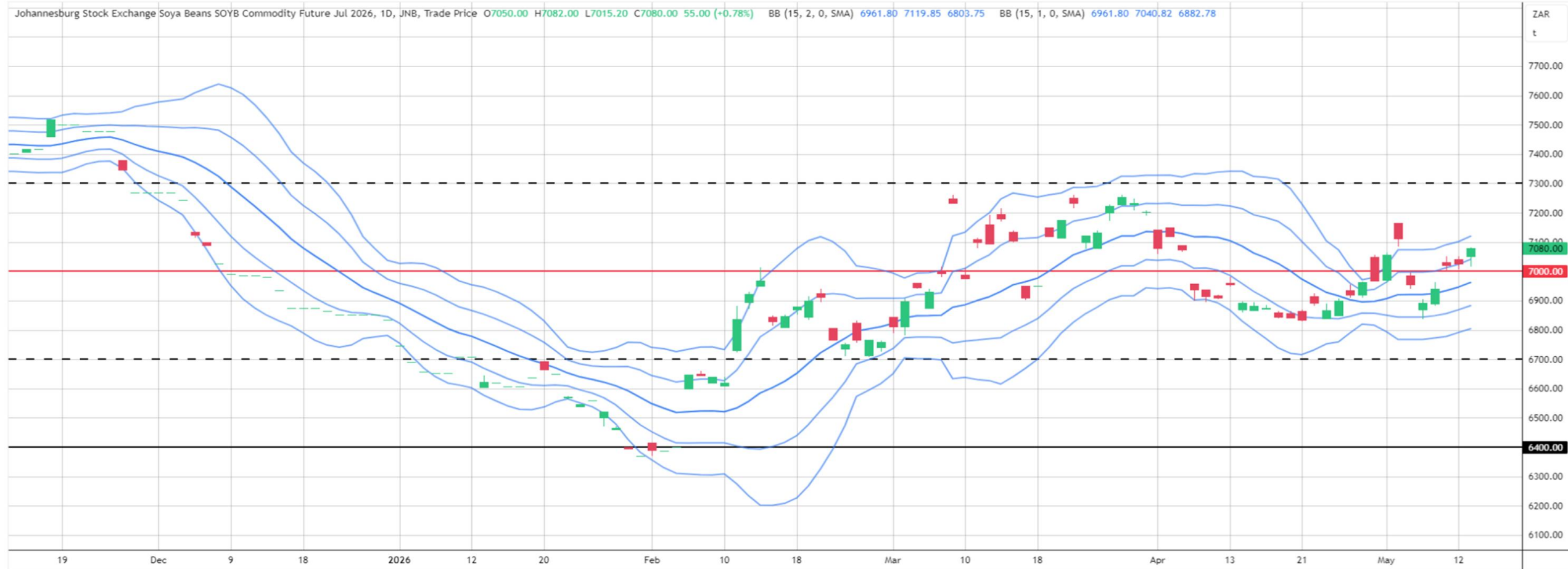


LSEG



SA Soya

Jul26 Daily: Contract status bullish > R7000



LSEG



US Kansas Wheat

Jul26 Daily: Contract status bullish > \$6.20



LSEG



SA Wheat

Jul26 Daily: Contract status bullish > R6000 [R50 drop]



Weather

SA Medium-term Precipitation Forecasts

GEFS week1 Ensemble Mean Total Rainfall (mm)

Period: 00z14May2026 - 00z20May2026

