

Daily market
Report
02 Apr 26



South African Rand (ZAR)

USD/ZAR Weekly: Medium-term ZAR bullish < R17.25



LSEG

USA Crude Light Sweet Oil

Continuous Daily: Contract status bullish > \$72



LSEG



USA Corn

Jul26 Weekly: Contract status bearish < \$4.72



White Maize

Jul26 Daily: Contract status bearish < R3800



LSEG



Yellow Maize

Jul26 Daily: Contract status bearish < R3720



LSEG



USA Soya

May26 Weekly: Contract status bullish > \$11.00



LSEG



Suns

May26 Daily: Contract status bearish < R9300



LSEG



SA Soya

May26 Daily: Contract status bearish < R7000



LSEG



US Kansas Wheat

May26 Daily: Contract status bullish > \$6.00

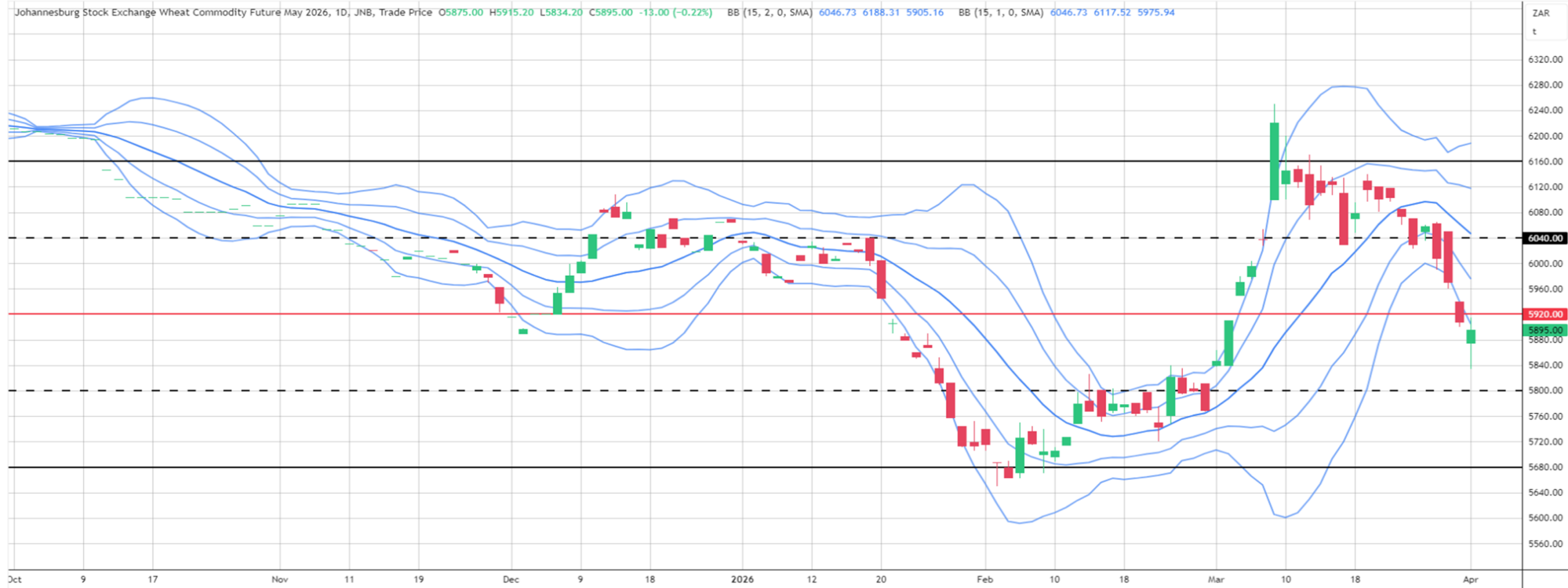


LSEG



SA Wheat

May26 Daily: Contract status bearish < R5920



LSEG



Weather

SA Medium-term Precipitation Forecasts

GEFS week1 Ensemble Mean Total Rainfall (mm)

Period: 18z02Apr2026 - 18z08Apr2026

