

Daily market
Report
19 Jun 25



Parity Movements (implied price moves)

USA Movement (Overnight)		Cents	Currencies	19-Jun-25	08:04:08
CORN CBOT (Jul25)	432.50	0.50	R/\$ last	R 18.0668	-0.02
SOY CBOT (Jul25)	1,072.75	1.00	Euro=	\$ 1.1457	-0.0046
W1 CBOT (Jul25)	573.00	21.25	GOLD	\$ 3,358	-19.59
W2 KCBT (Jul25)	567.75	16.50	BRENT OIL	\$ 76.77	1.26
BlackSea Wheat (Near)	198.00	0.00			
Index Change					
Maize (Jul25)	3,076	R 1.01	Wheat CBOT (Jul25)	3,804	R 138.03
Soya (Jul25)	7,121	R 0.73	Wheat Kansas (Jul25)	3,769	R 106.50
BlackSea Wheat Near	3,577	-3	RAND EFFECT ON WHEAT PARITY	3,659	-3.04

South African Rand (ZAR)

USD/ZAR Weekly: Medium-term ZAR bullish < R18.15



LSEG

USA Corn

Jul25 Daily: Contract status bearish < \$4.70



LSEG

White Maize

Jul25 Daily: Contract status bullish > R4300



LSEG

Yellow Maize

Jul25 Daily: Contract status bullish > R4200



LSEG



USA Soya

Jul25 Daily: Contract status bullish > \$10.55



LSEG

Suns

Jul25 Daily: Contract status bullish > R9300



LSEG

SA Soya

Jul25 Daily: Contract status very bearish < R7450



LSEG

US KANSAS Wheat

Jul25 Daily: Contract very bullish >\$5.60

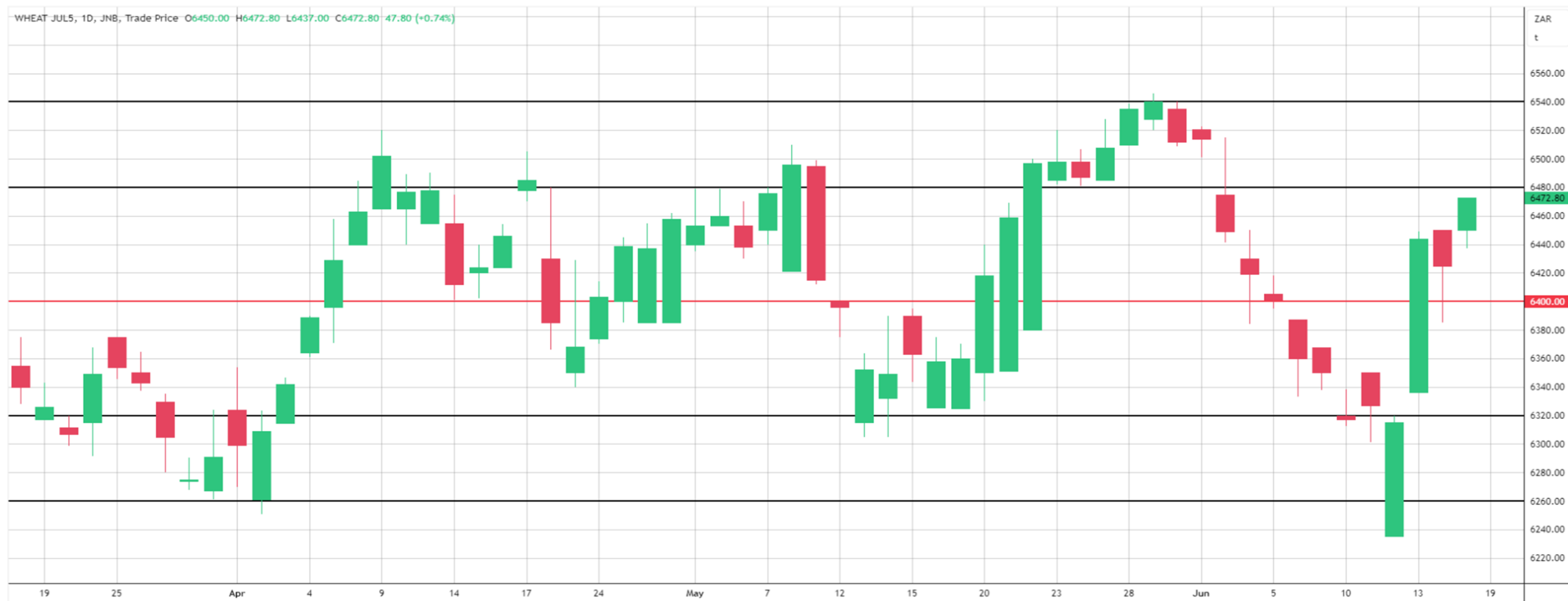


LSEG



SA Wheat

Jul25 Daily: Contract status bullish > R6400



LSEG

