

Daily market
Report
30 May 25



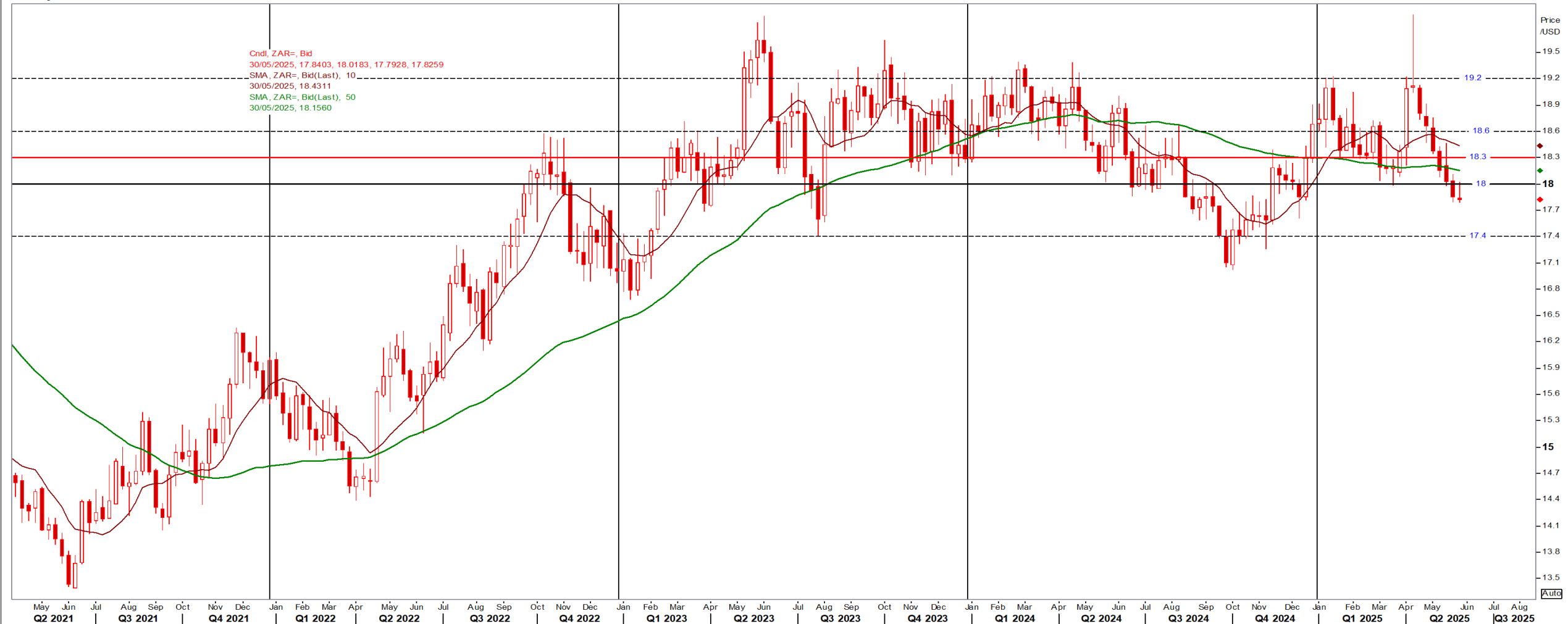
Parity Movements (implied price moves)

USA Movement (Overnight)		Cents	Currencies	30-May-25	07:59:16
CORN CBOT (Jul25)	447.75	0.50	R/\$ last	R 17.8280	-0.0483
SOY CBOT (Jul25)	1,044.25	-6.00	Euro=	\$ 1.1350	0.0070
W1 CBOT (Jul25)	536.50	8.25	GOLD	\$ 3,304	17.8800
W2 KCBT (Jul25)	535.75	11.25			
BlackSea Wheat (Near)	215.00	0.00			
Index Change					
Maize (Jul25)	3,143	R -5.00	Wheat CBOT (Jul25)	3,514	R 44.67
Soya (Jul25)	6,840	R -57.94	Wheat Kansas (Jul25)	3,510	R 64.39
BlackSea Wheat Near	3,833	-10	RAND EFFECT ON WHEAT PARITY	3,436	-9.31

South African Rand (ZAR)

USD/ZAR Weekly: Medium-term ZAR bullish < R18.15

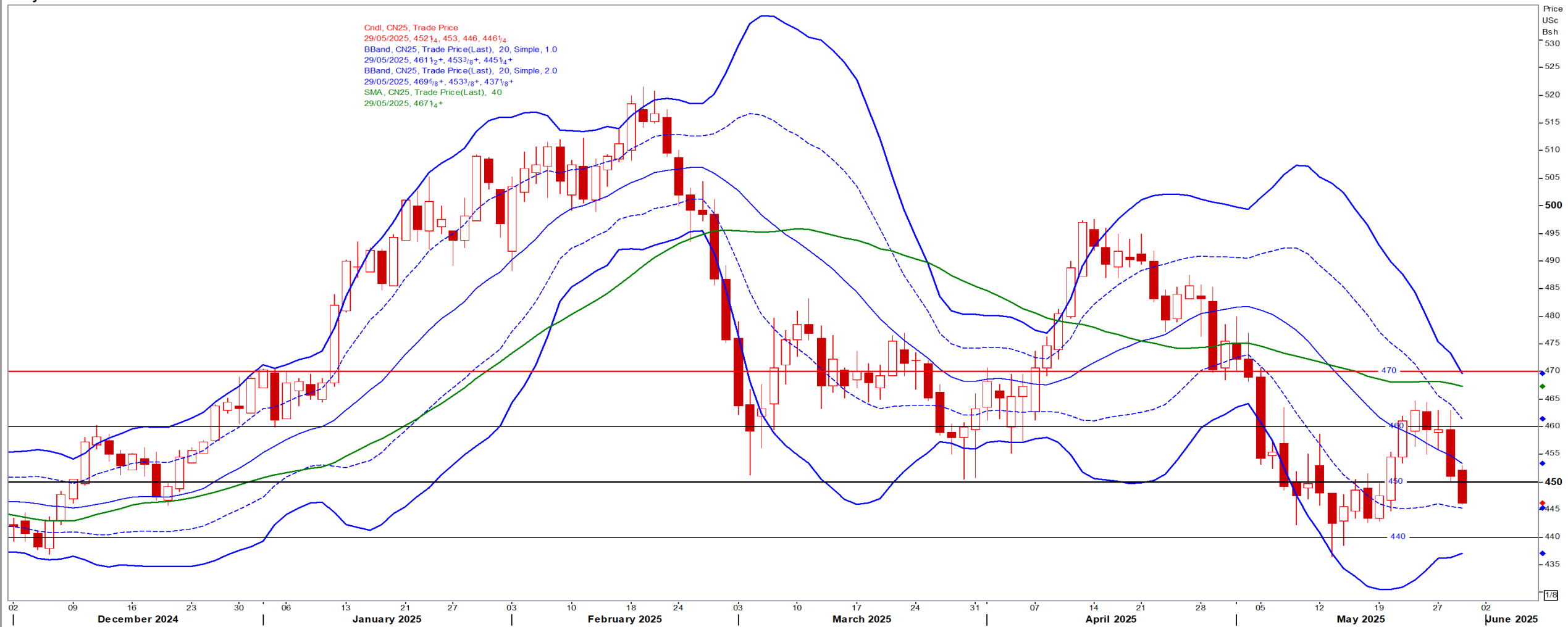
Weekly ZAR=



USA Corn

Jul25 Daily: Contract status bearish < \$4.70

Daily CN25



White Maize

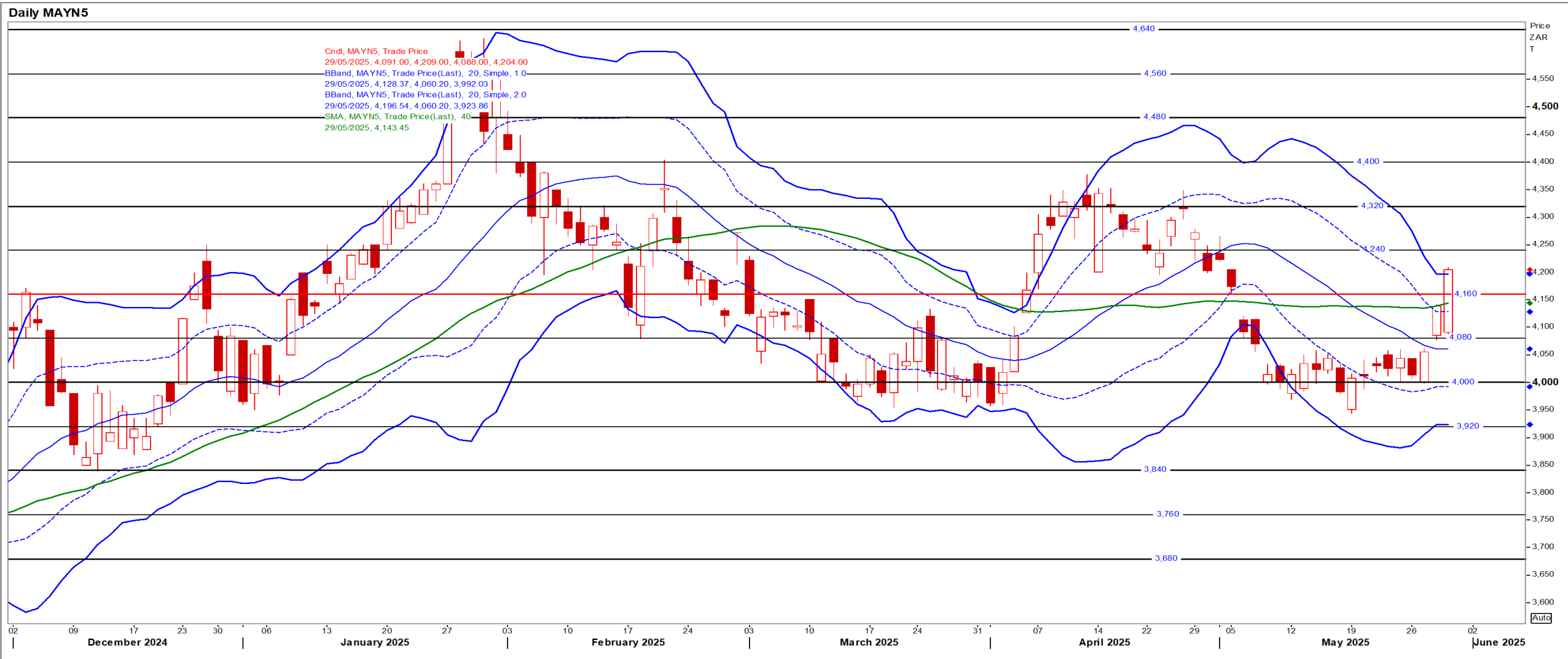
Jul25 Daily: Contract status bullish > R4300

Daily MAWN5



Yellow Maize

Jul25 Daily: Contract status bullish > R4160

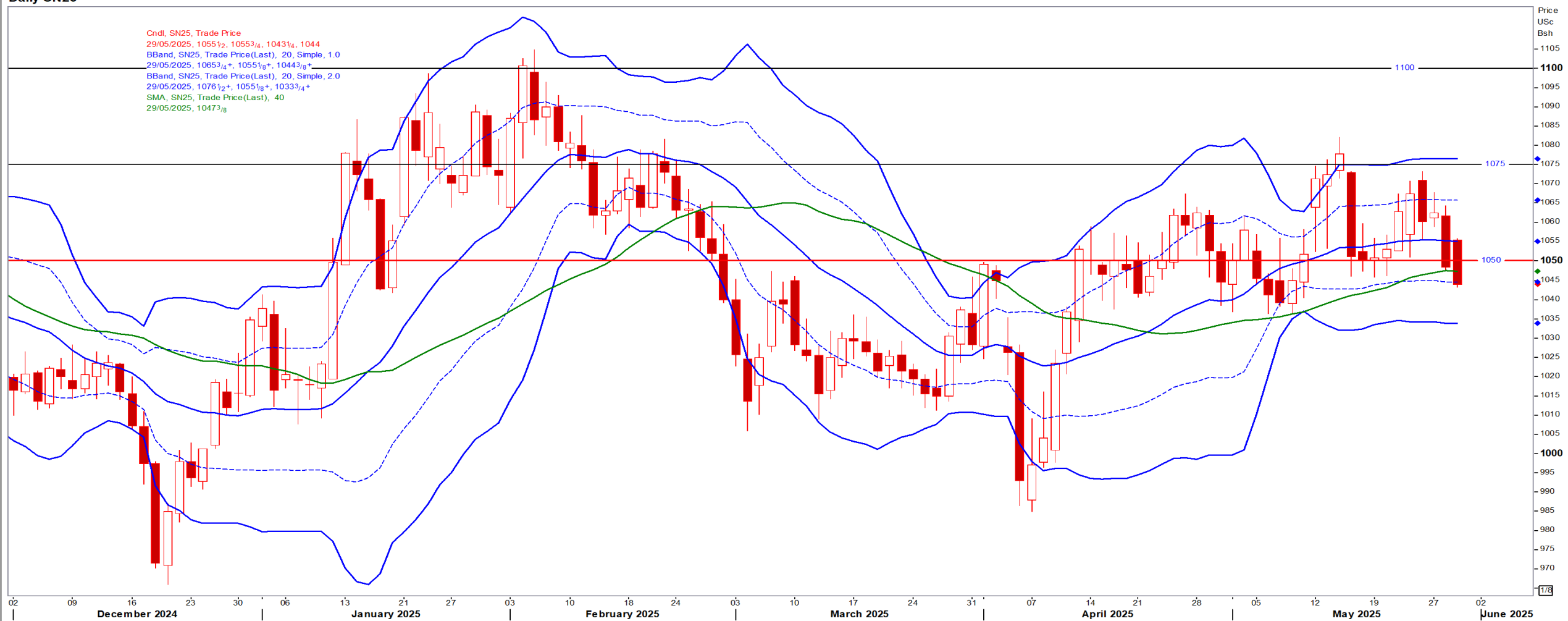


USA Soya

Jul25 Daily: Contract status bearish < \$10.50

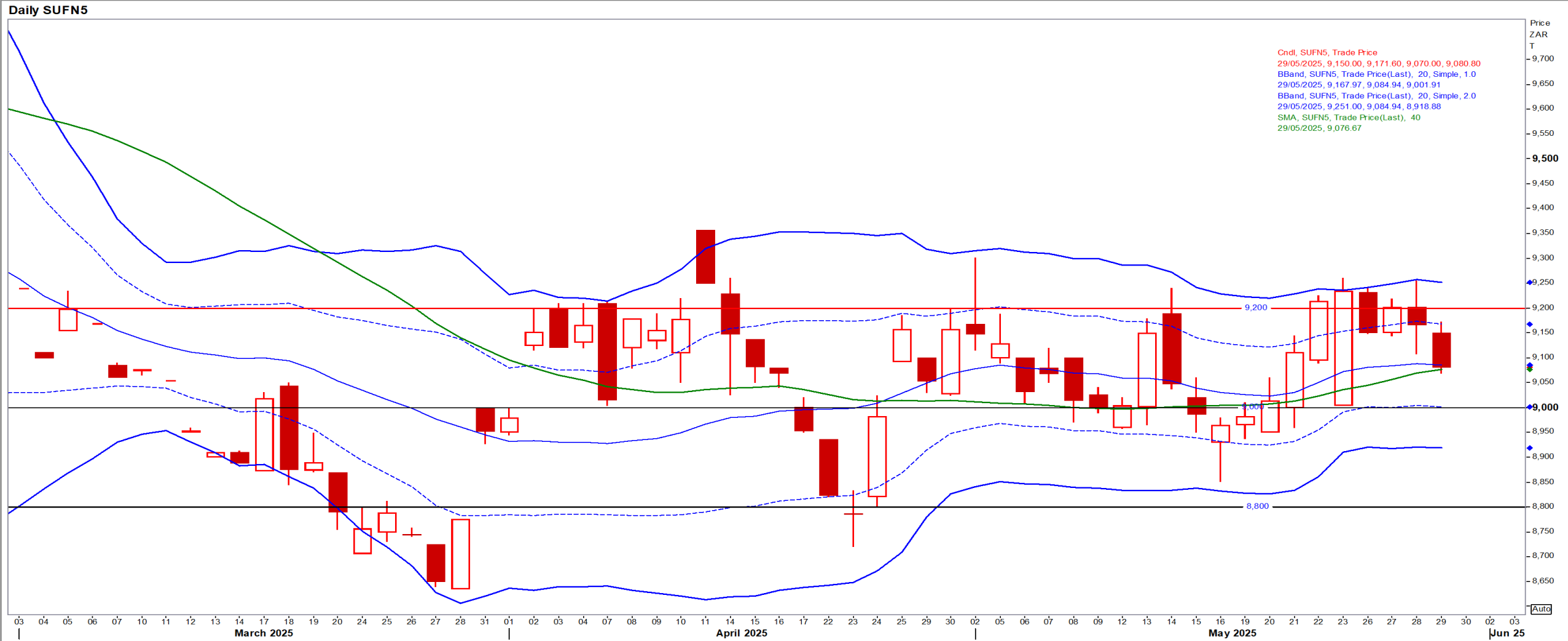
Daily SN25

Cndl, SN25, Trade Price
29/05/2025, 1055 $\frac{1}{2}$, 1055 $\frac{3}{4}$, 1043 $\frac{1}{4}$, 1044
BBand, SN25, Trade Price(Last), 20, Simple, 1.0
29/05/2025, 1065 $\frac{3}{4}$ +, 1055 $\frac{1}{8}$ +, 1044 $\frac{3}{8}$ +,
BBand, SN25, Trade Price(Last), 20, Simple, 2.0
29/05/2025, 1076 $\frac{1}{2}$ +, 1055 $\frac{1}{8}$ +, 1033 $\frac{3}{4}$ +,
SMA, SN25, Trade Price(Last), 40
29/05/2025, 1047 $\frac{3}{8}$



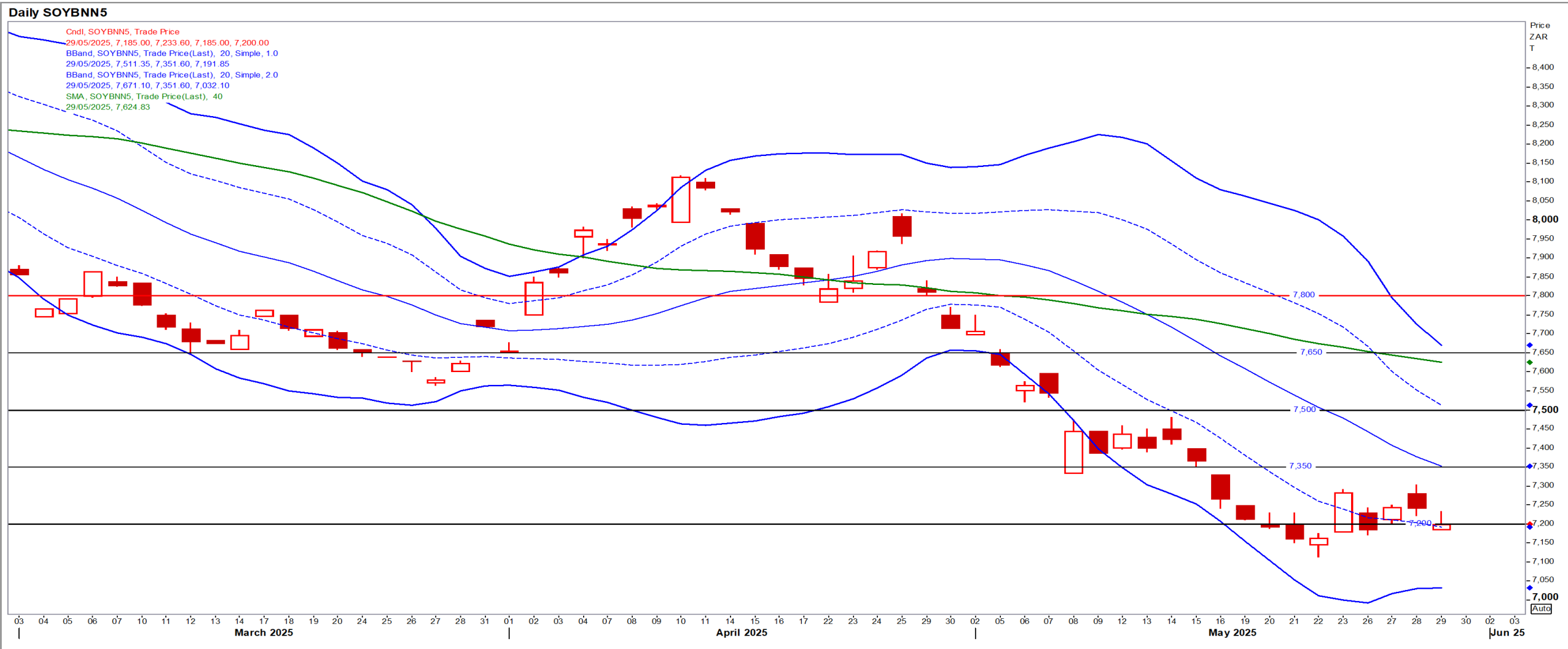
Suns

Jul25 Daily: Contract status bearish < R9200



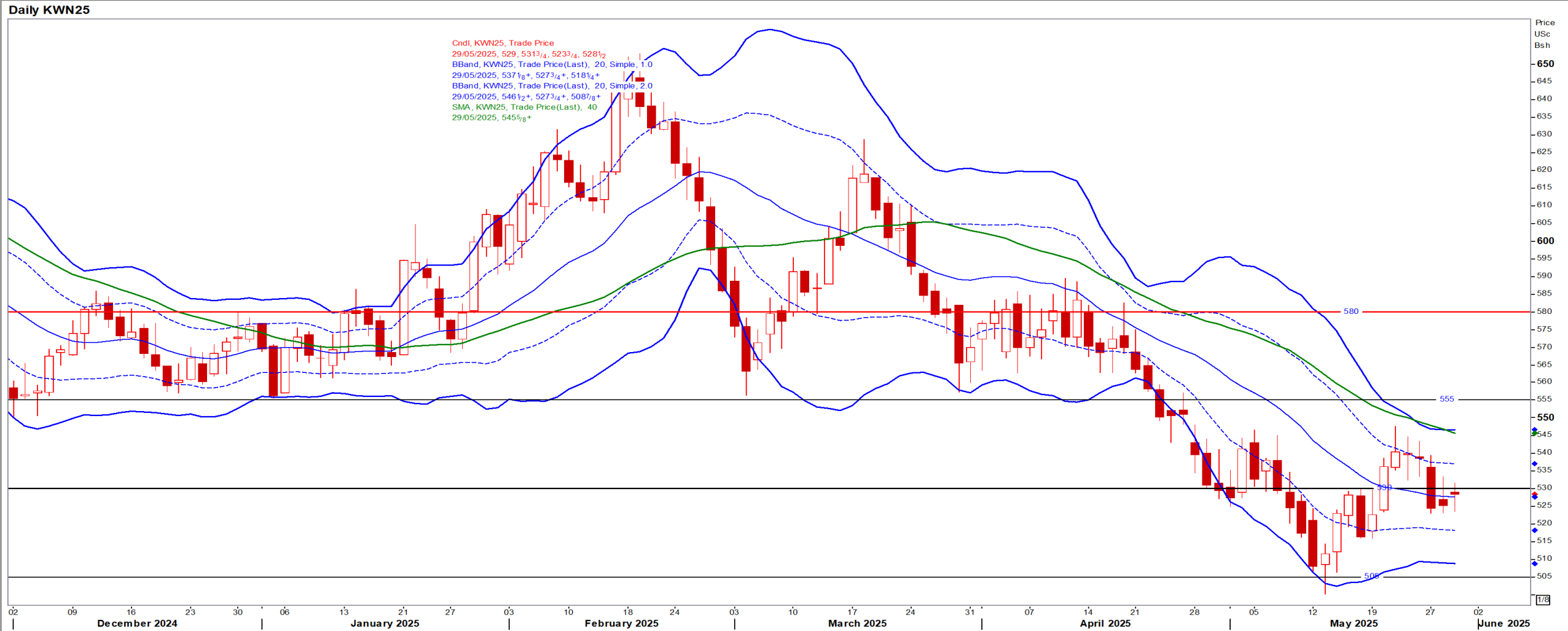
SA Soya

Jul25 Daily: Contract status very bearish < R7500



US KANSAS Wheat

Jul25 Daily: Contract very bearish < \$5.55



SA Wheat

Jul25 Daily: Contract status bullish > R6360

Daily WEAN5

Cndl, WEAN5, Trade Price
29/05/2025, 6,528.00, 6,546.00, 6,520.00, 6,528.00
BBand, WEAN5, Trade Price(Last), 20, Simple, 1.0
29/05/2025, 6,502.96, 6,442.30, 6,381.64
BBand, WEAN5, Trade Price(Last), 20, Simple, 2.0
29/05/2025, 6,563.62, 6,442.30, 6,320.98
SMA, WEAN5, Trade Price(Last), 40
29/05/2025, 6,427.05

