

Daily market  
Report  
29 May 25

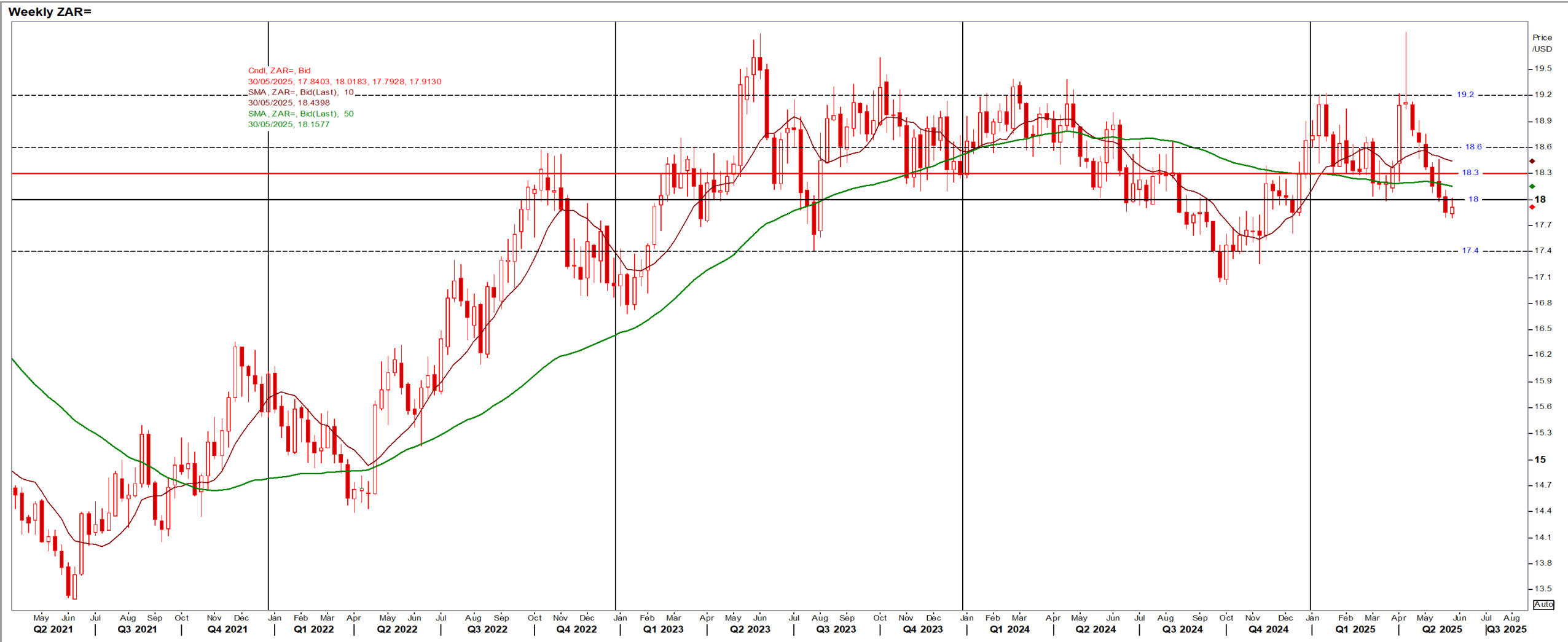


# Parity Movements (implied price moves)

USA Movement (Overnight)		Cents	Currencies	29-May-25	08:15:40
CORN CBOT (Jul25)	450.50	-12.00	R/\$ last	R 17.9400	0.0402
SOY CBOT (Jul25)	1,053.00	-8.25	Euro=	\$ 1.1256	-0.0075
W1 CBOT (Jul25)	529.75	-5.25	GOLD	\$ 3,269	-55.0700
W2 KCBT (Jul25)	526.50	-6.00			
BlackSea Wheat (Near)	215.00	0.00			
Index Change					
Maize (Jul25)	3,182	R -77.43	Wheat CBOT (Jul25)	3,492	R -26.70
Soya (Jul25)	6,940	R -38.70	Wheat Kansas (Jul25)	3,471	R -31.69
BlackSea Wheat Near	3,857	9	RAND EFFECT ON WHEAT PARITY	3,510	7.87

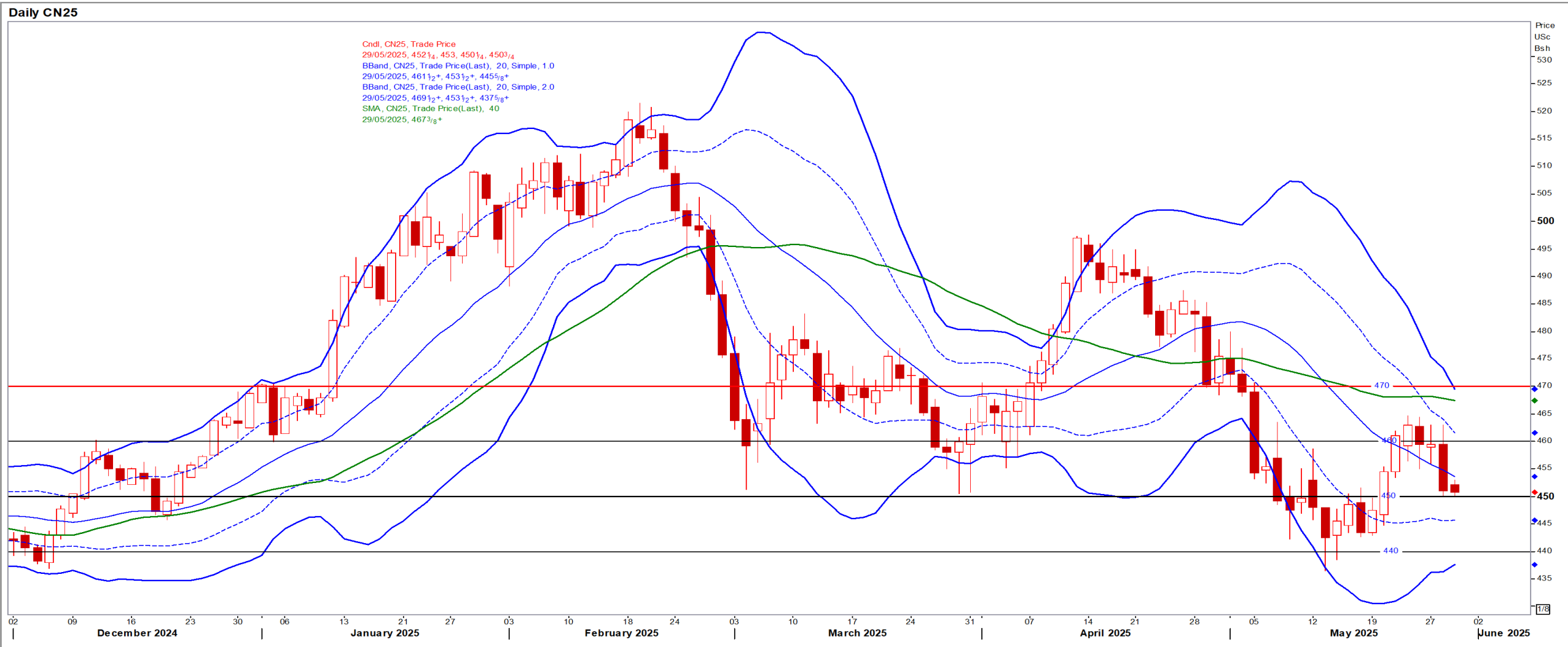
# South African Rand (ZAR)

USD/ZAR Weekly: Medium-term ZAR bullish < R18.15



# USA Corn

Jul25 Daily: Contract status bearish < \$4.70



# White Maize

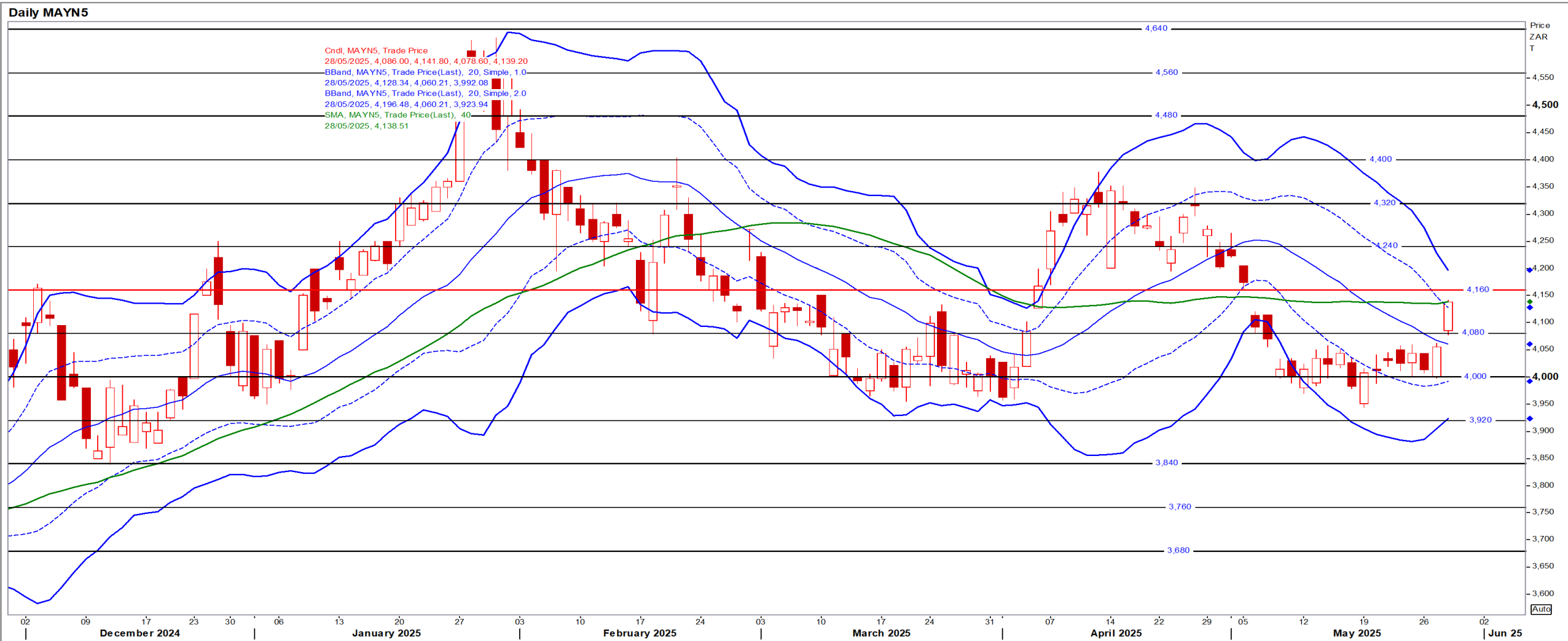
Jul25 Daily: Contract status bullish > R4300

Daily MAWN5



# Yellow Maize

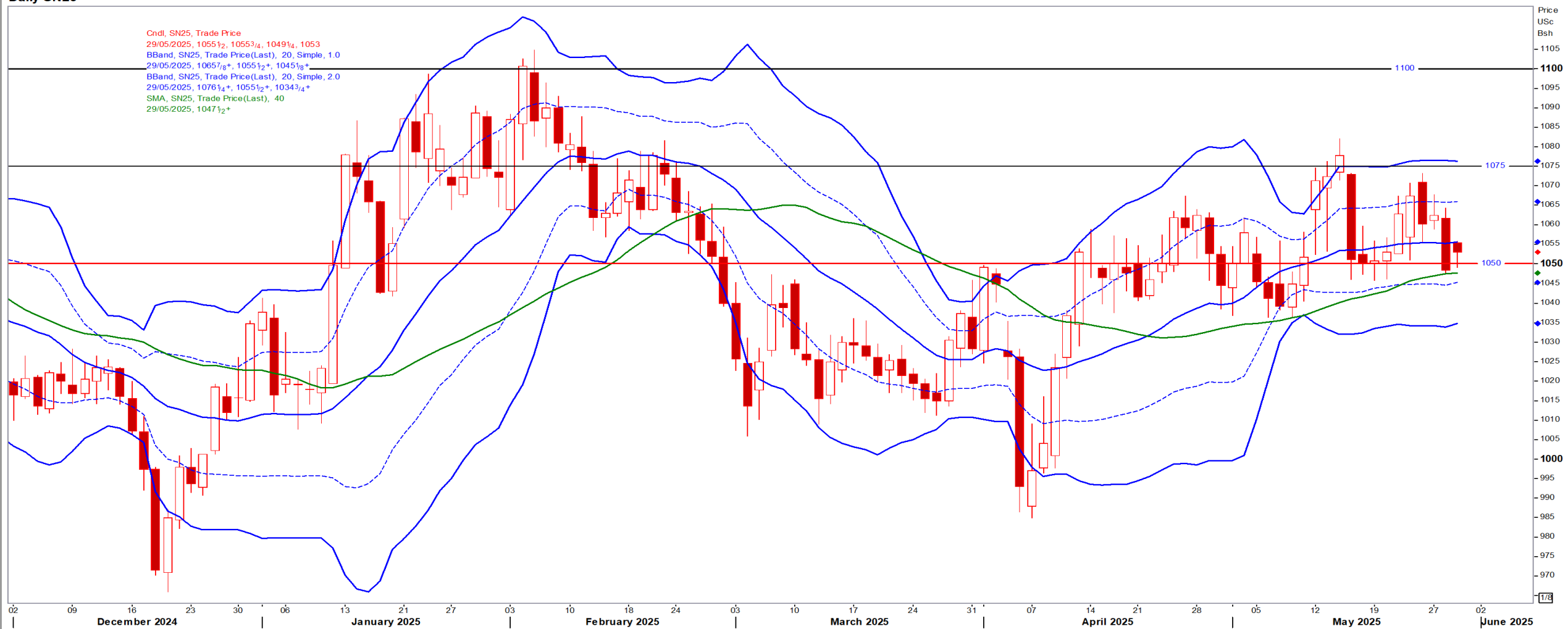
Jul25 Daily: Contract status bearish < R4160



# USA Soya

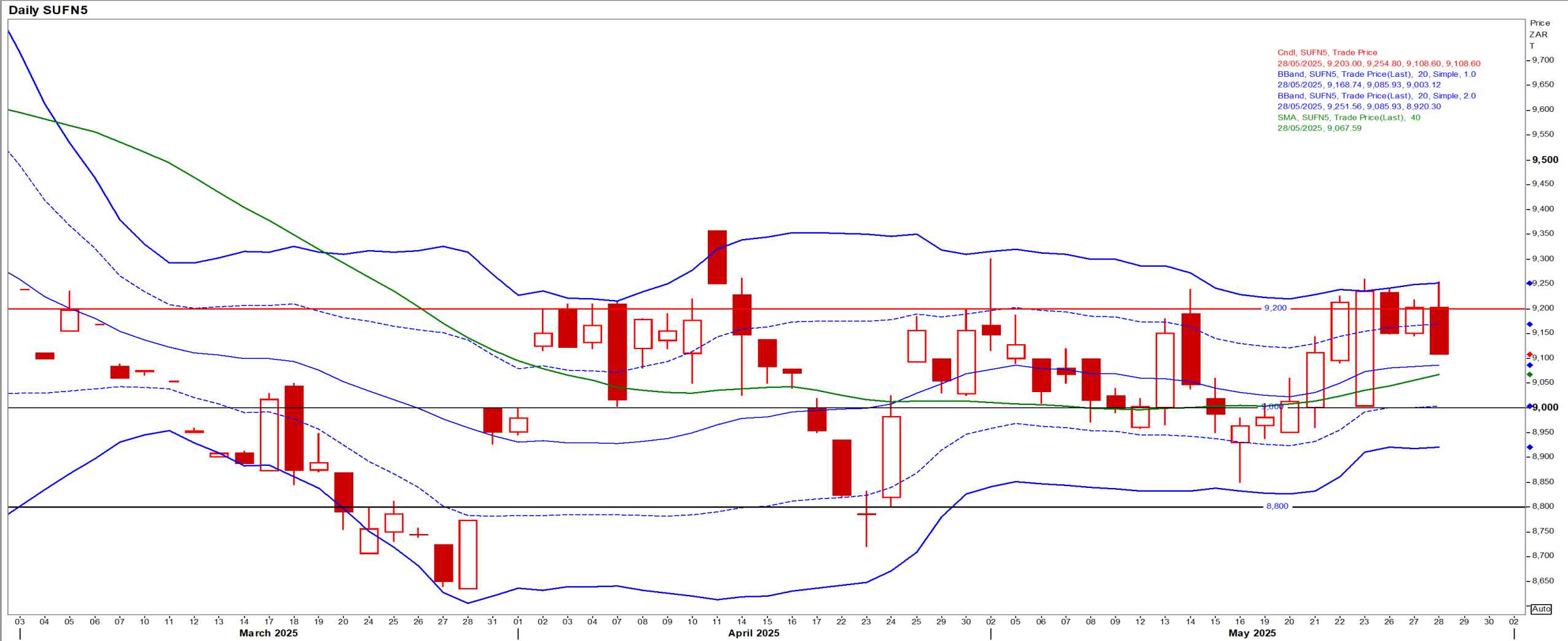
Jul25 Daily: Contract status bullish > \$10.50

Daily SN25



# Suns

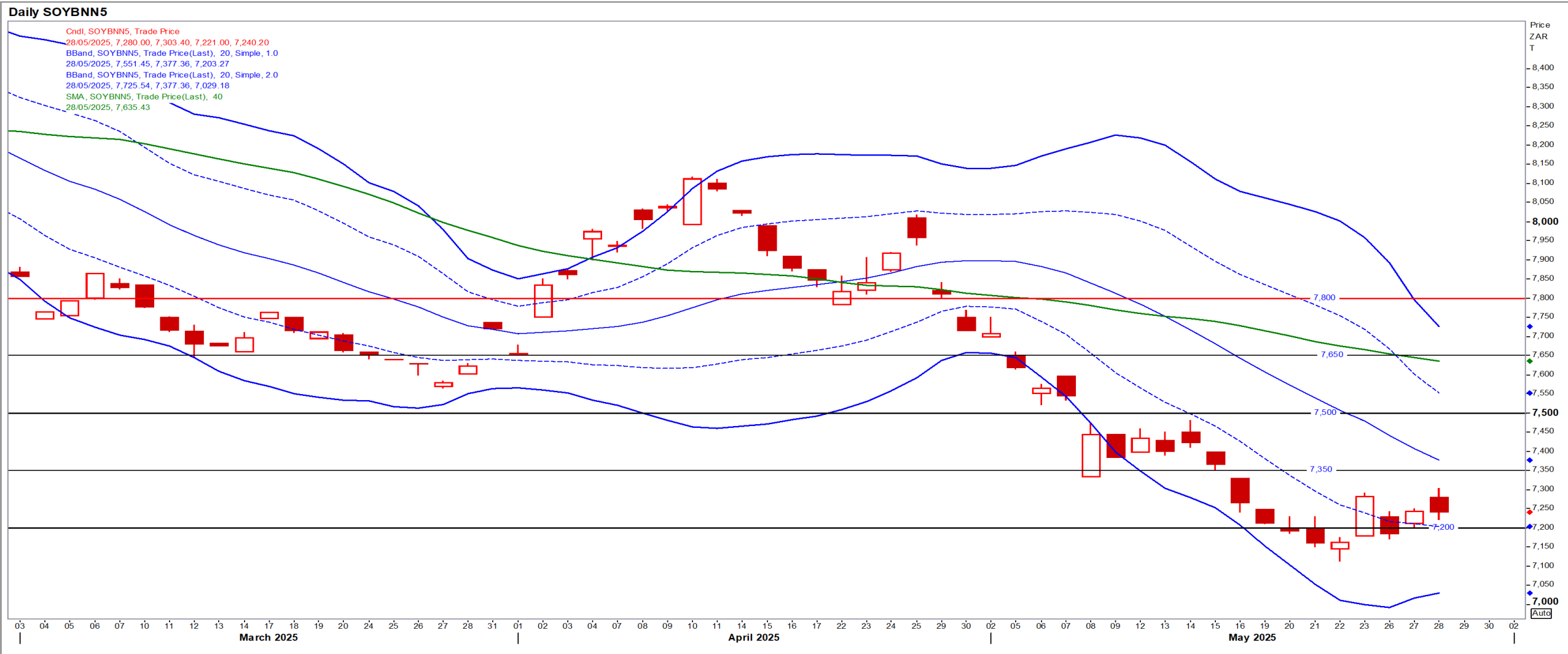
Jul25 Daily: Contract status bearish < R9200





# SA Soya

Jul25 Daily: Contract status very bearish < R7500



# US KANSAS Wheat

Jul25 Daily: Contract very bearish < \$5.55



# SA Wheat

Jul25 Daily: Contract status bullish > R6360

## Daily WEAN5

