

Daily market
Report
28 May 25



Parity Movements (implied price moves)

USA Movement (Overnight)		Cents	Currencies	28-May-25	07:59:17
CORN CBOT (Jul25)	460.75	3.50	R/\$ last	R 17.9631	0.0725
SOY CBOT (Jul25)	1,060.50	-3.00	Euro=	\$ 1.1312	-0.0035
W1 CBOT (Jul25)	534.00	1.00	GOLD	\$ 3,308	10.2300
W2 KCBT (Jul25)	531.50	4.00			
BlackSea Wheat (Near)	215.00	0.00			
Index Change					
Maize (Jul25)	3,258	R 37.80	Wheat CBOT (Jul25)	3,525	R 20.80
Soya (Jul25)	6,999	R 8.53	Wheat Kansas (Jul25)	3,508	R 40.45
BlackSea Wheat Near	3,862	16	RAND EFFECT ON WHEAT PARITY	3,482	14.05

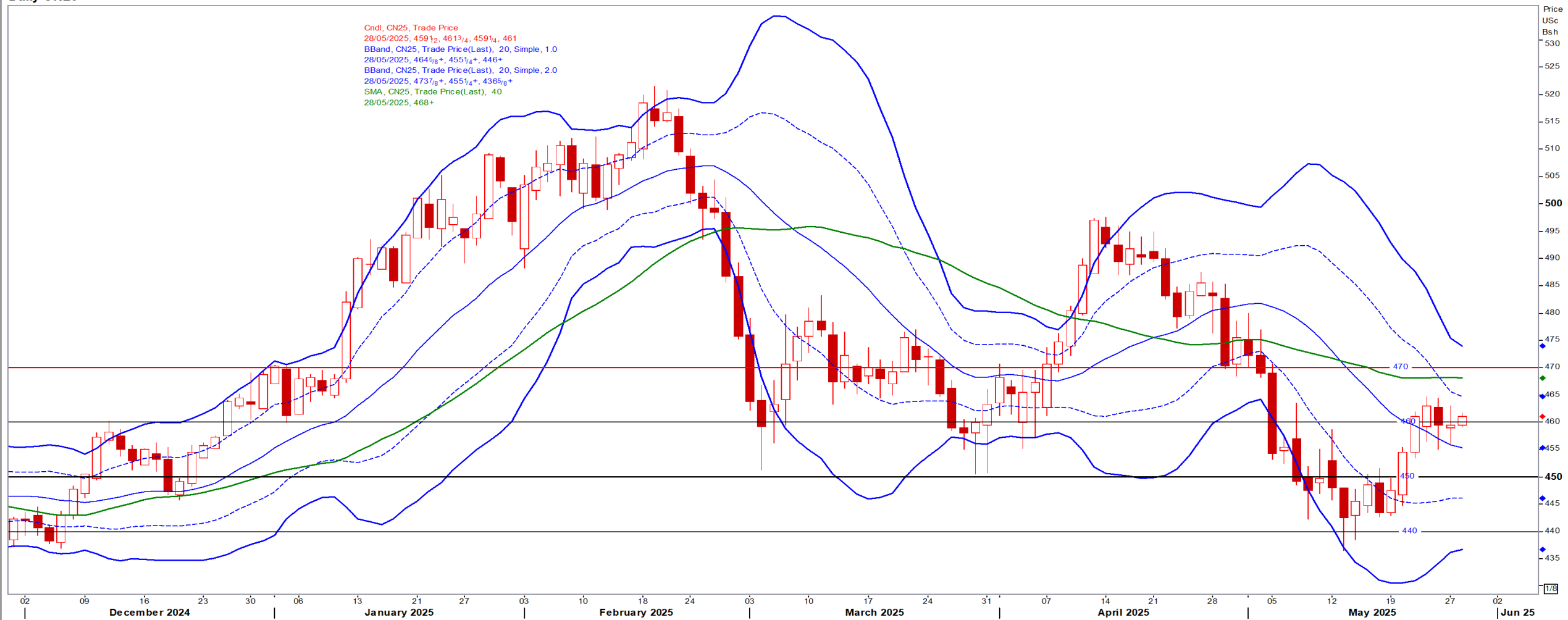
USD/ZAR Weekly: Medium-term ZAR bullish < R18.15

- [illegible]

USA Corn

Jul25 Daily: Contract status bearish < \$4.70

Daily CN25



White Maize

Jul25 Daily: Contract status bullish > R4300

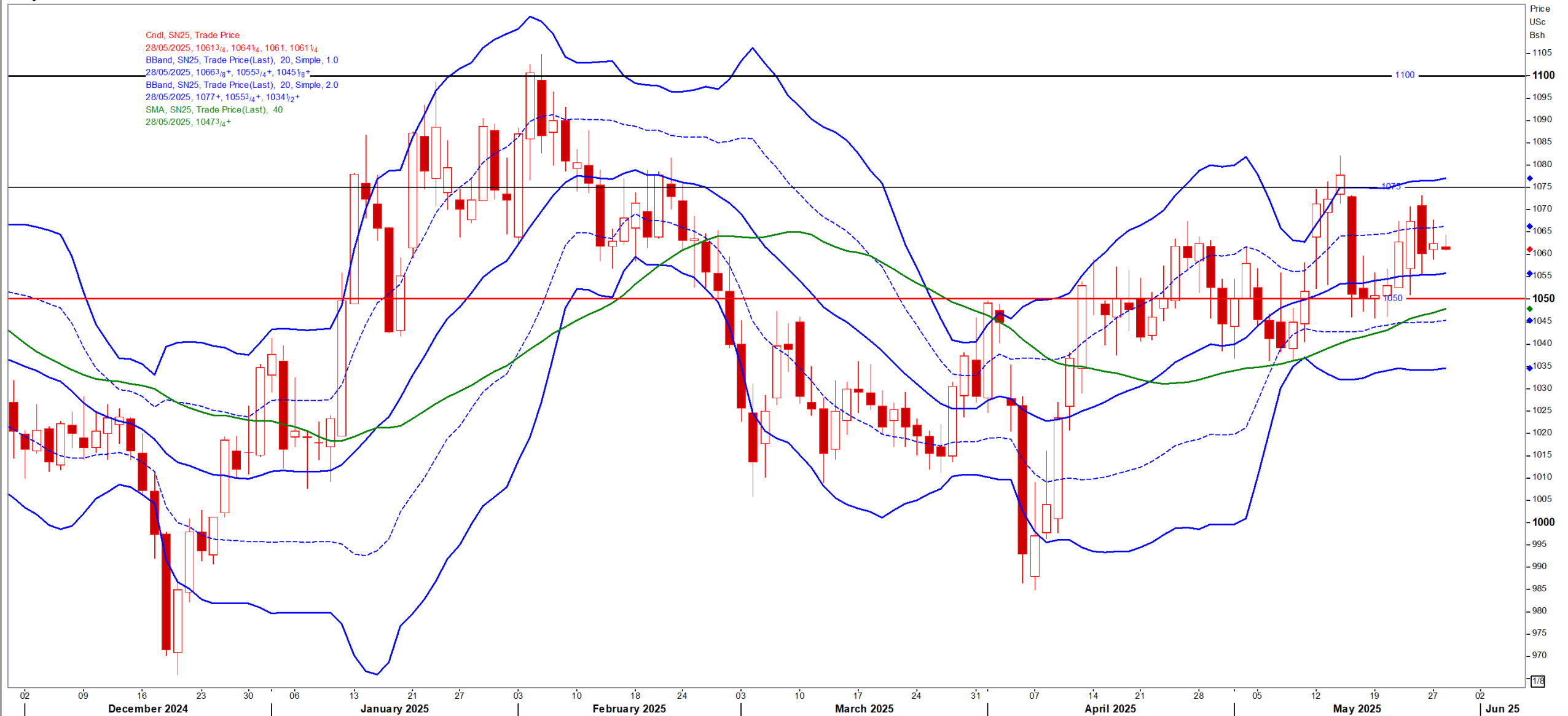
Daily MAWN5



Yellow Maize

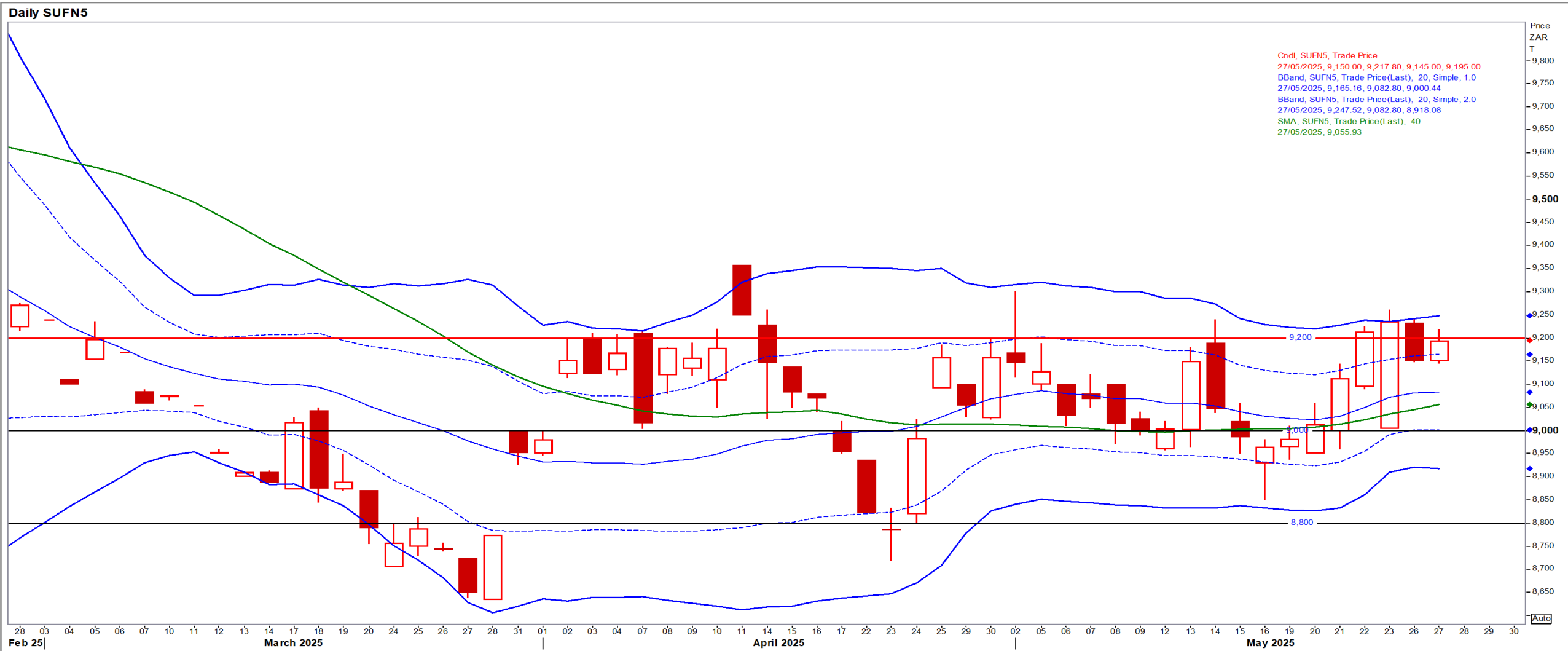
Jul25 Daily: Contract status bearish < R4160





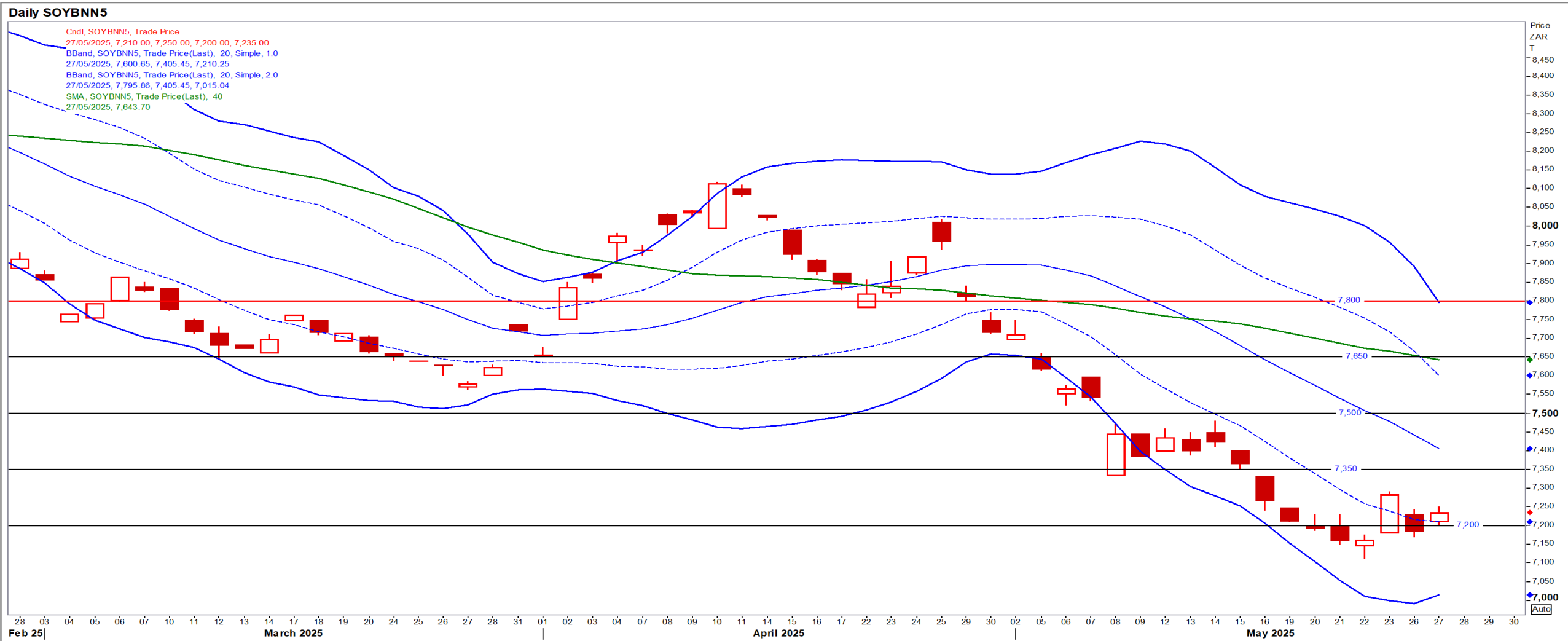
Suns

Jul25 Daily: Contract status bearish < R9200



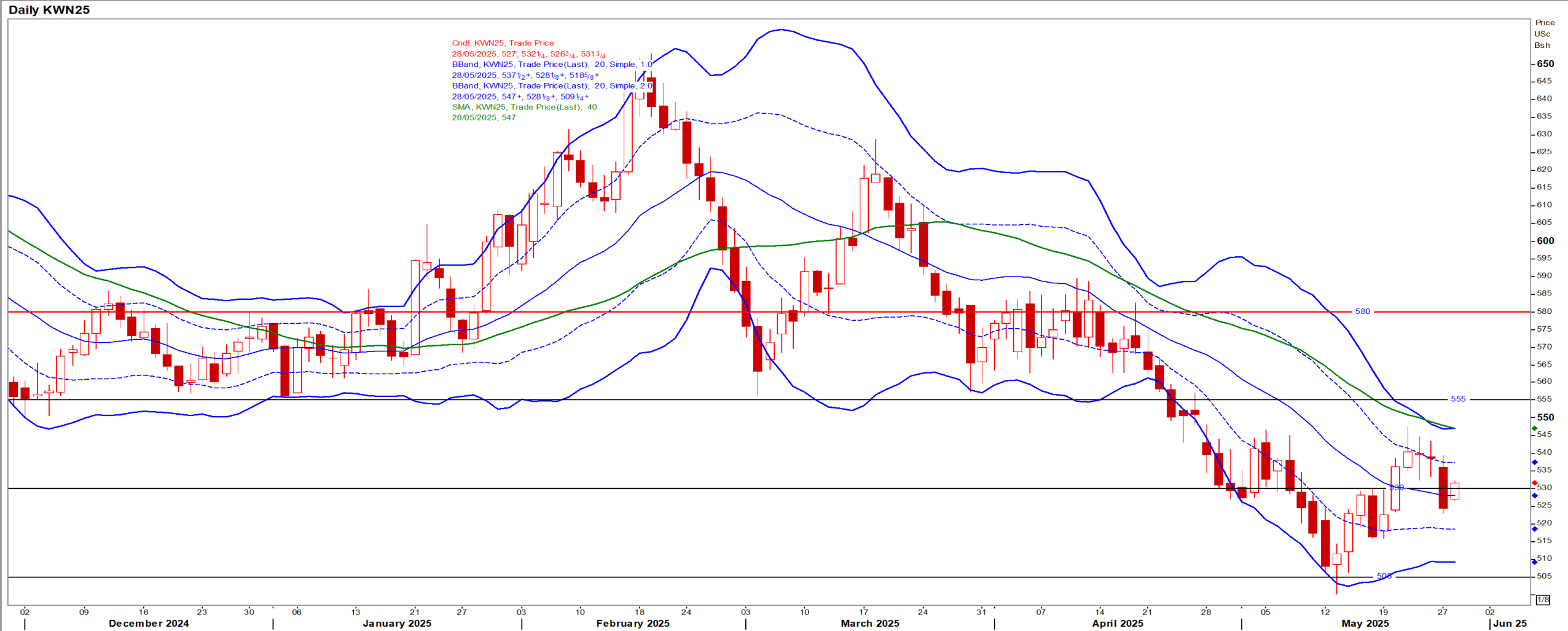
SA Soya

Jul25 Daily: Contract status very bearish < R7500



US KANSAS Wheat

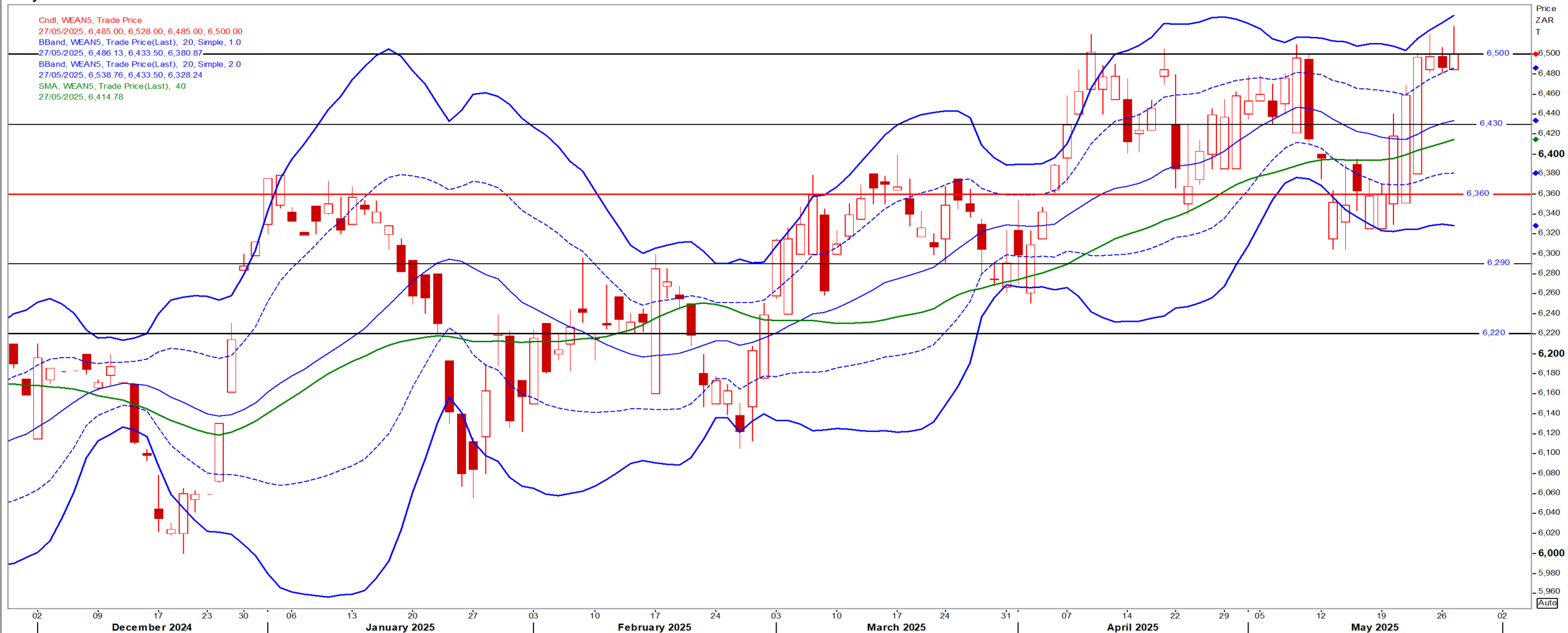
Jul25 Daily: Contract very bearish < \$5.55



SA Wheat

Jul25 Daily: Contract status bullish > R6360

Daily WEAN5



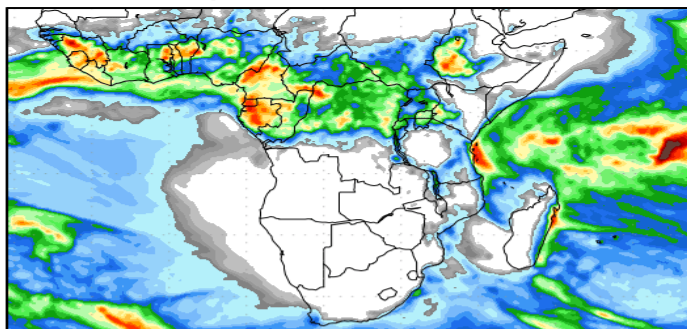
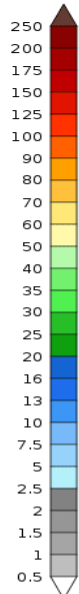
Weather

SA & US Medium-term Precipitation Forecasts

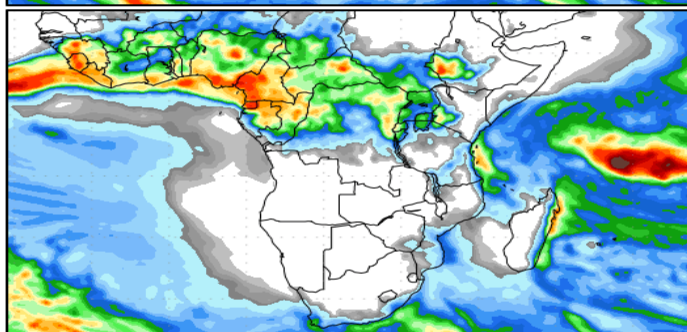
Precipitation Forecasts

Precipitation (mm)
during the period:

Mon, 26 MAY 2025 at 00Z
-to-
Tue, 03 JUN 2025 at 00Z

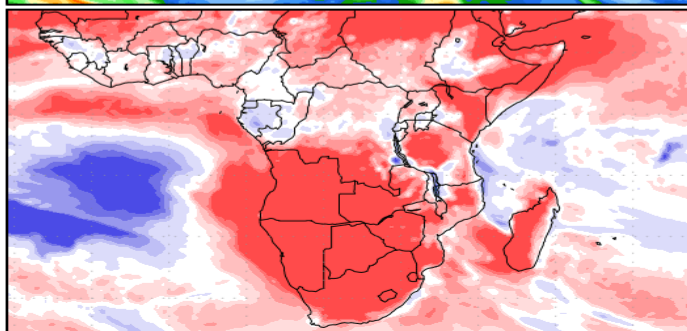
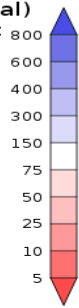


Tue, 03 JUN 2025 at 00Z
-to-
Wed, 11 JUN 2025 at 00Z



Precipitation (% of normal)
during the first period:

Mon, 26 MAY 2025 at 00Z
-to-
Tue, 03 JUN 2025 at 00Z



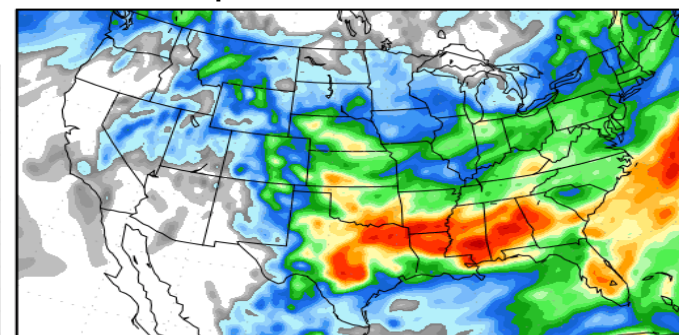
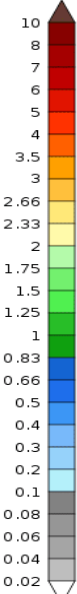
Precipitation forecasts from the National Centers for Environmental Prediction.
Normal rainfall derived from Xie-Arkin (CMA) Monthly Climatology for 1979-2003.
Forecast Initialization Time: 00Z26MAY2025

GrADS/COLA

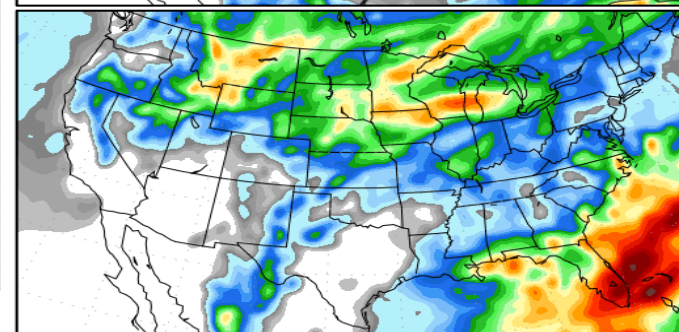
Precipitation Forecasts

Precipitation (in)
during the period:

Mon, 26 MAY 2025 at 00Z
-to-
Tue, 03 JUN 2025 at 00Z

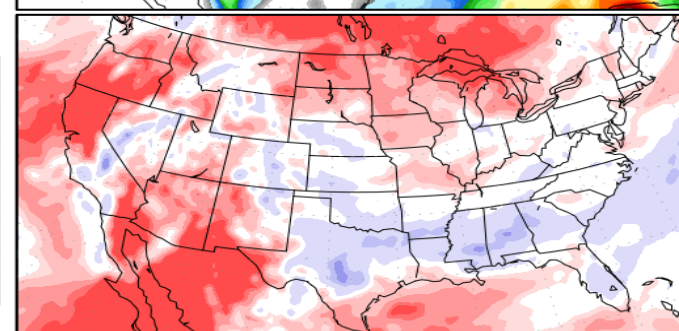
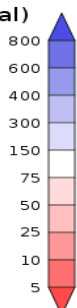


Tue, 03 JUN 2025 at 00Z
-to-
Wed, 11 JUN 2025 at 00Z



Precipitation (% of normal)
during the first period:

Mon, 26 MAY 2025 at 00Z
-to-
Tue, 03 JUN 2025 at 00Z



Precipitation forecasts from the National Centers for Environmental Prediction.
Normal rainfall derived from Xie-Arkin (CMA) Monthly Climatology for 1979-2003.
Forecast Initialization Time: 00Z26MAY2025

GrADS/COLA