

Daily market
Report
27 May 25



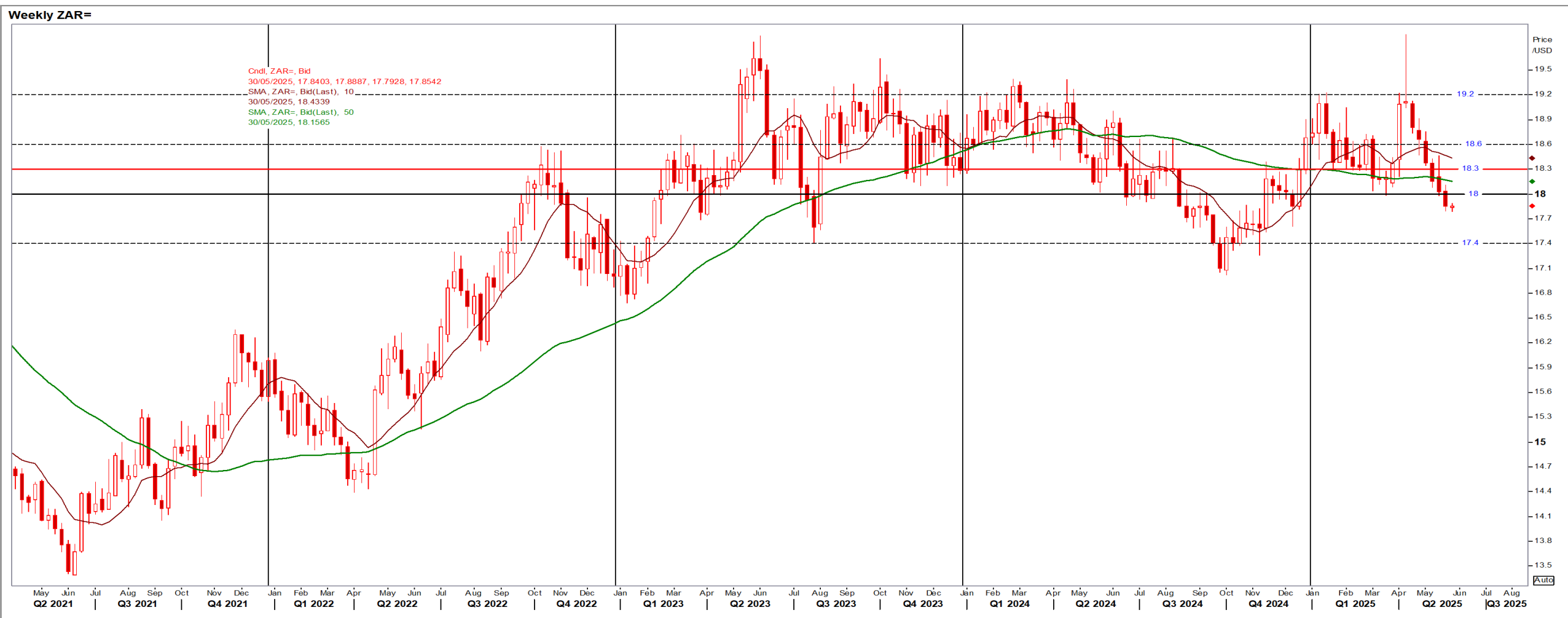
Parity Movements (implied price moves)

USA Movement (Overnight)		Cents	Currencies	27-May-25	08:09:55
CORN CBOT (Jul25)	459.50	0.25	R/\$ last	R 17.8632	0.0042
SOY CBOT (Jul25)	1,064.50	4.50	Euro=	\$ 1.1384	0.0005
W1 CBOT (Jul25)	541.25	-2.75	GOLD	\$ 3,325	-4.2359
W2 KCBT (Jul25)	537.25	-1.50			
BlackSea Wheat (Near)	215.00	-4.00			
Index Change					
Maize (Jul25)	3,231	R 2.52	Wheat CBOT (Jul25)	3,553	R -17.21
Soya (Jul25)	6,986	R 31.17	Wheat Kansas (Jul25)	3,526	R -9.01
BlackSea Wheat Near	3,841	-71	RAND EFFECT ON WHEAT PARITY	3,536	0.83

South African Rand (ZAR)

USD/ZAR Weekly: Medium-term ZAR bullish < R18.15

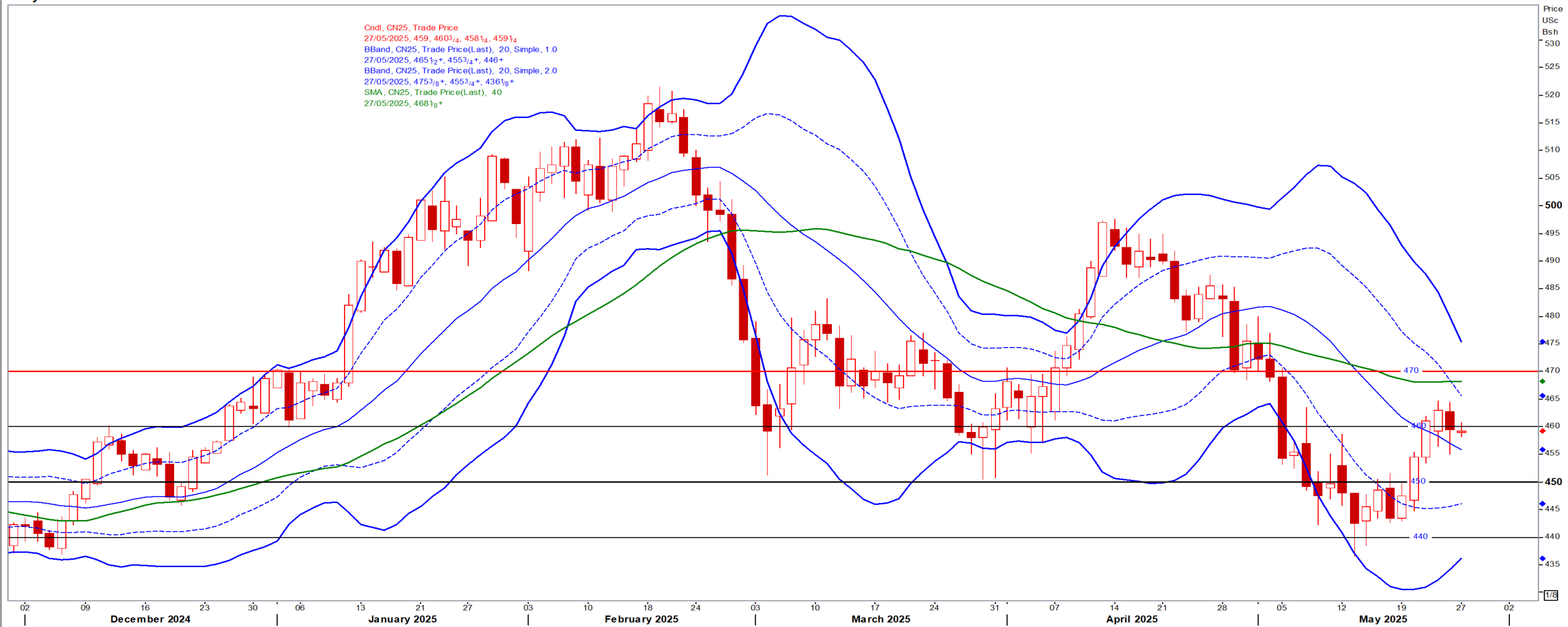
- SARB to announce the rate decision Thursday after keeping rates unchanged in March on global trade risks and the SA budget disputes – Reuters



USA Corn

Jul25 Daily: Contract status bearish < \$4.70

Daily CN25



White Maize

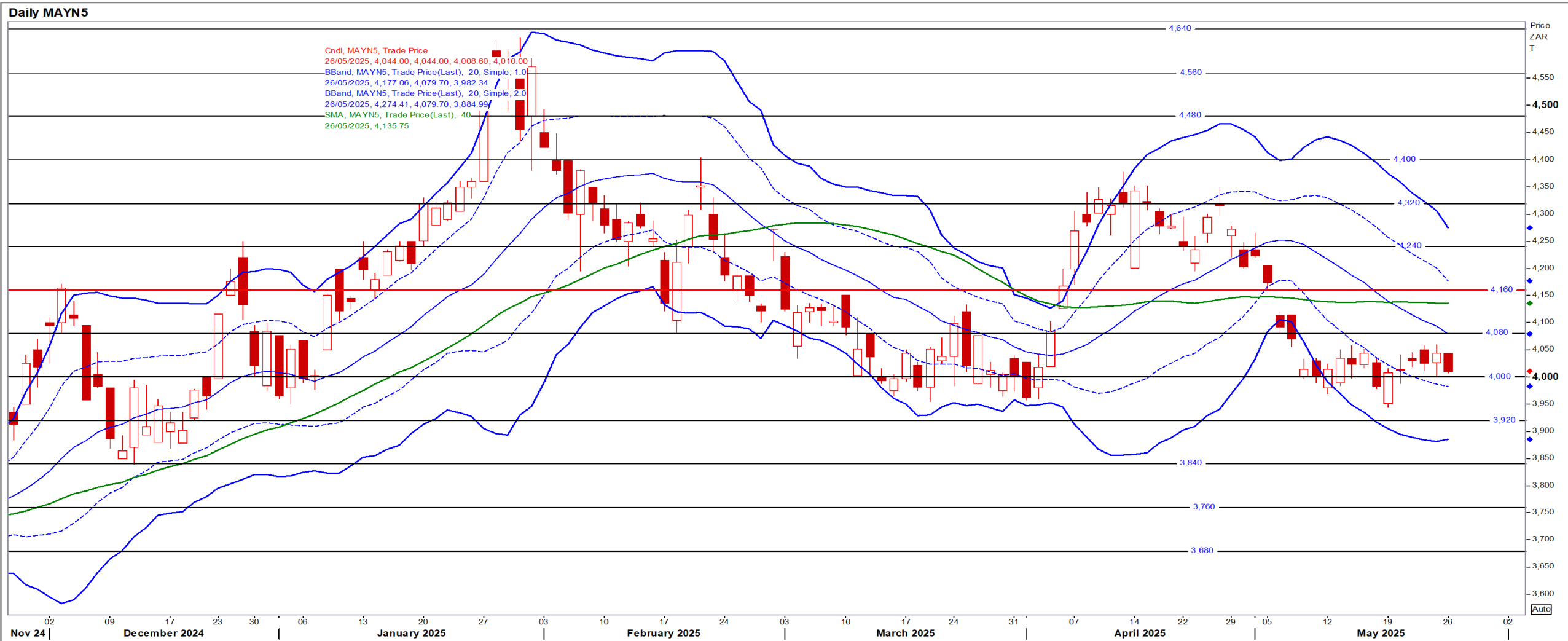
Jul25 Daily: Contract status bullish > R4300

Daily MAWN5



Yellow Maize

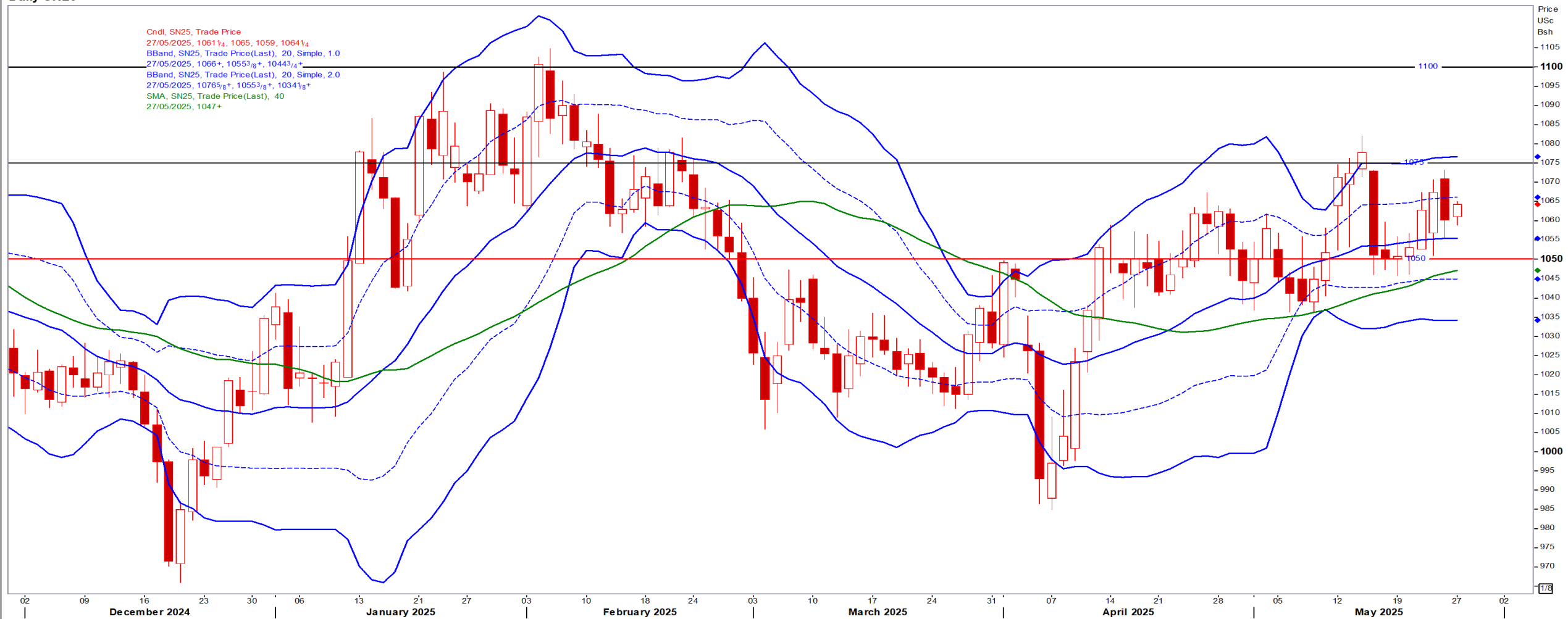
Jul25 Daily: Contract status bearish < R4160



USA Soya

Jul25 Daily: Contract status bullish > \$10.50

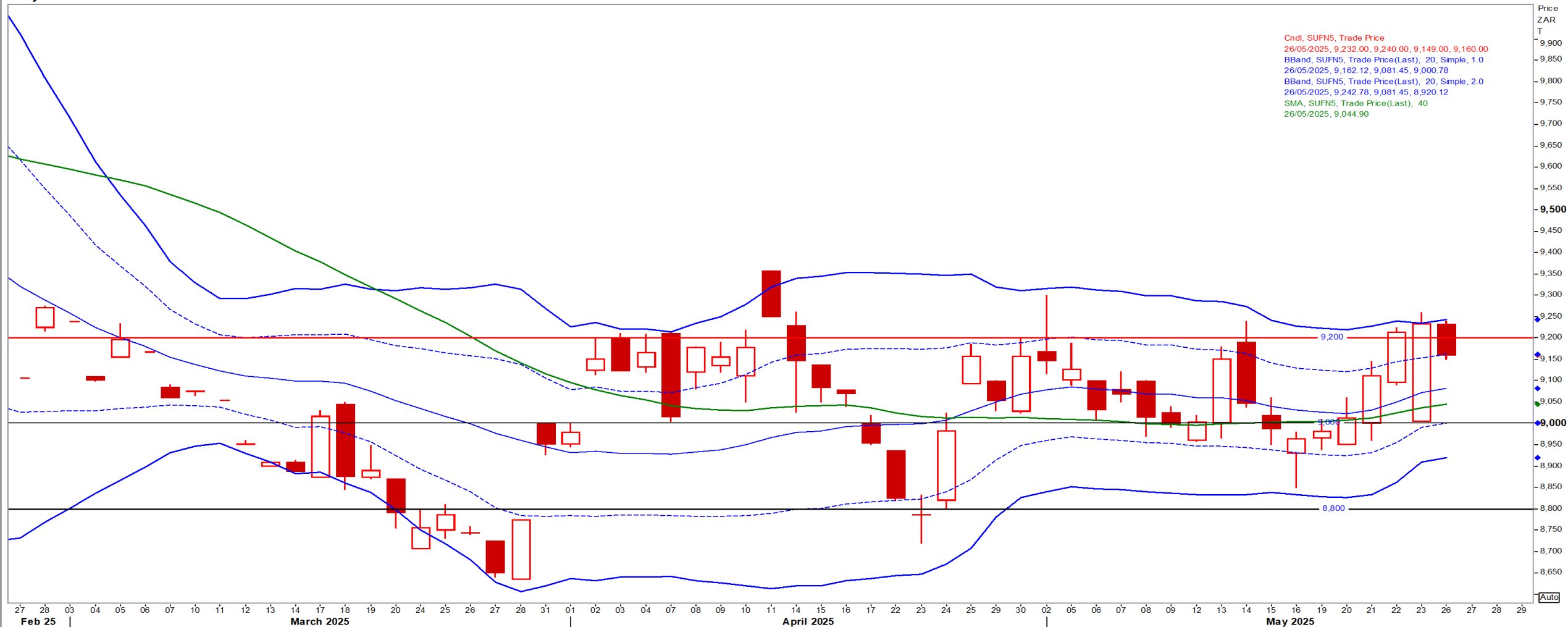
Daily SN25



Suns

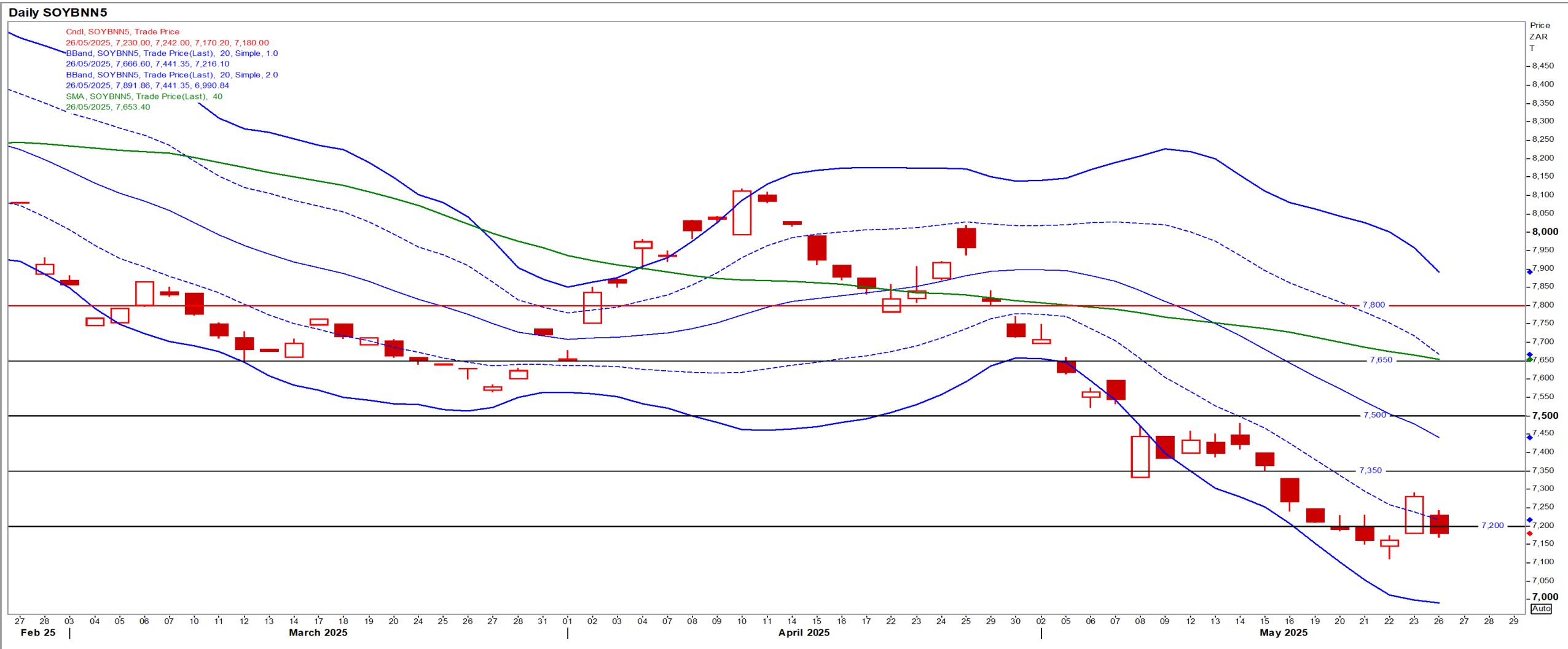
Jul25 Daily: Contract status bearish < R9200

Daily SUFN5

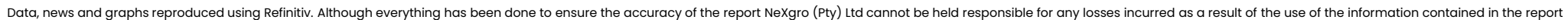


SA Soya

Jul25 Daily: Contract status very bearish < R7500



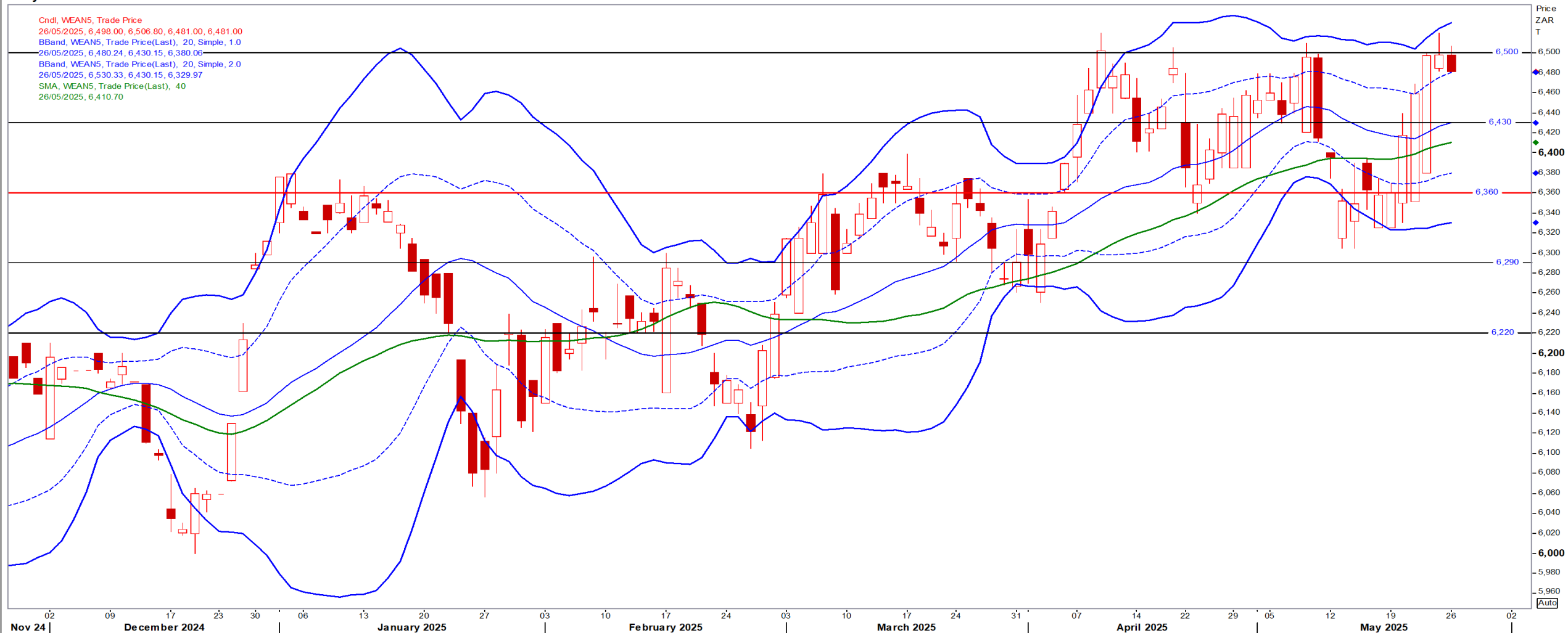
Daily KWN25



SA Wheat

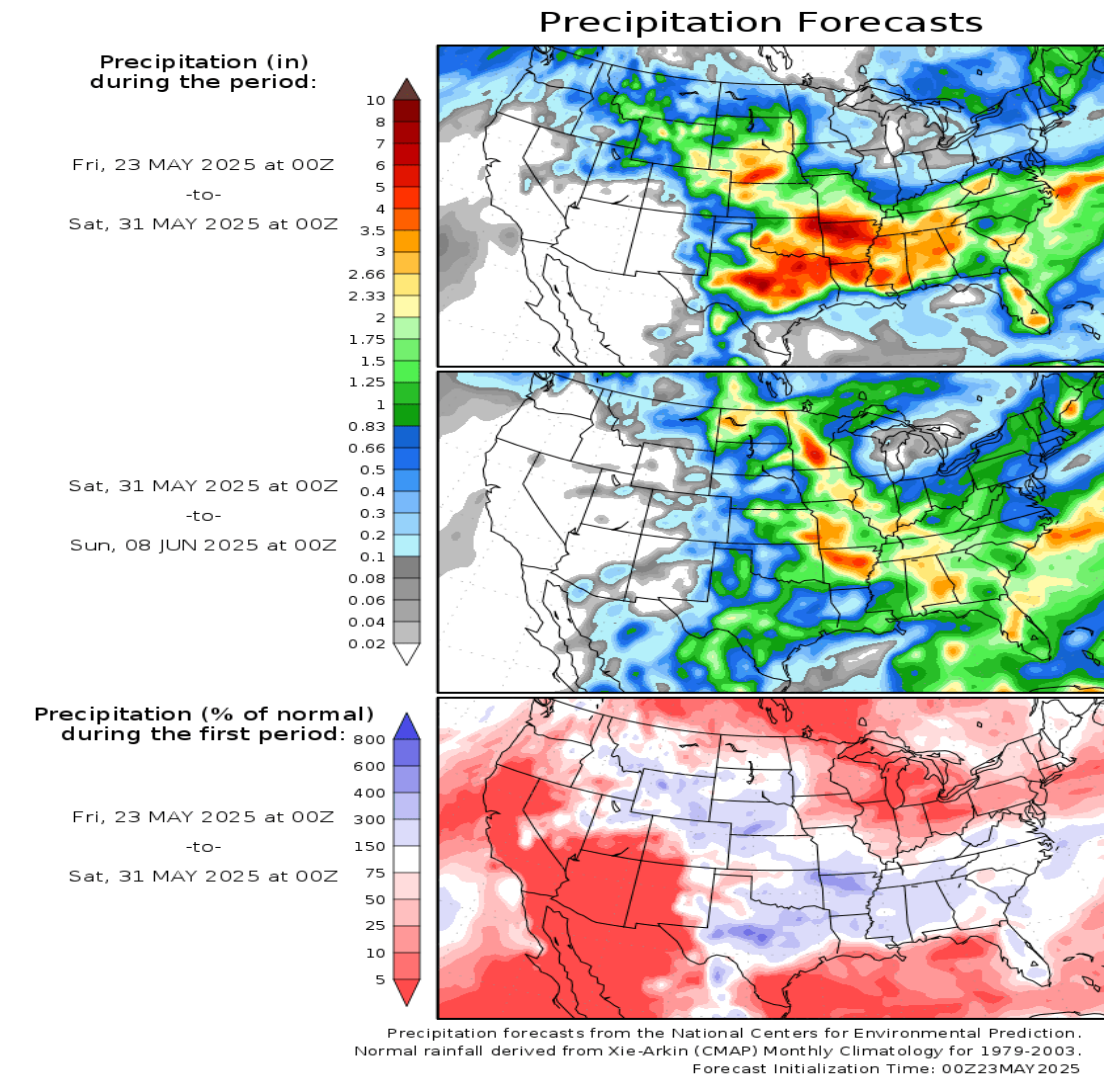
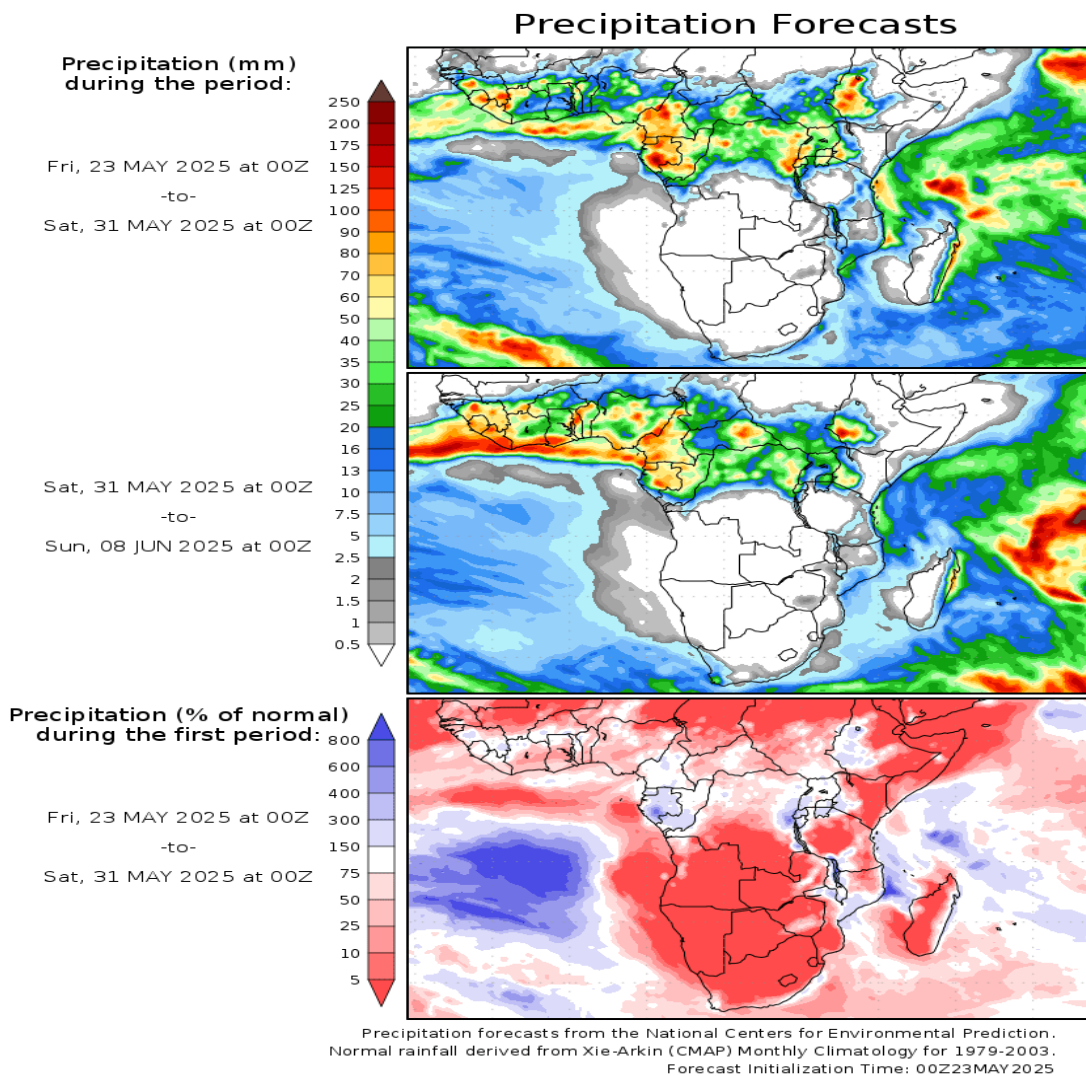
Jul25 Daily: Contract status bullish > R6360

Daily WEAN5



Weather

SA & US Medium-term Precipitation Forecasts



GrADS/COLA