

Daily market
Report
21 May 25



Parity Movements (implied price moves)

USA Movement (Overnight)		Cents	Currencies	21-May-25	07:52:11
CORN CBOT (Jul25)	455.75	4.25	R/\$ last	R 17.8726	-0.1602
SOY CBOT (Jul25)	1,058.25	5.75	Euro=	\$ 1.1331	0.0075
W1 CBOT (Jul25)	550.50	12.00	GOLD	\$ 3,315	79.1300
W2 KCBT (Jul25)	540.75	6.25	BRENT	\$ 66.40	0.89
BlackSea Wheat (Near)	215.00	0.00			
Index Change					
Maize (Jul25)	3,207	R 1.43	Wheat CBOT (Jul25)	3,615	R 47.11
Soya (Jul25)	6,949	R -24.19	Wheat Kansas (Jul25)	3,551	R 9.58
BlackSea Wheat Near	3,843	-34	RAND EFFECT ON WHEAT PARITY	3,510	-31.46

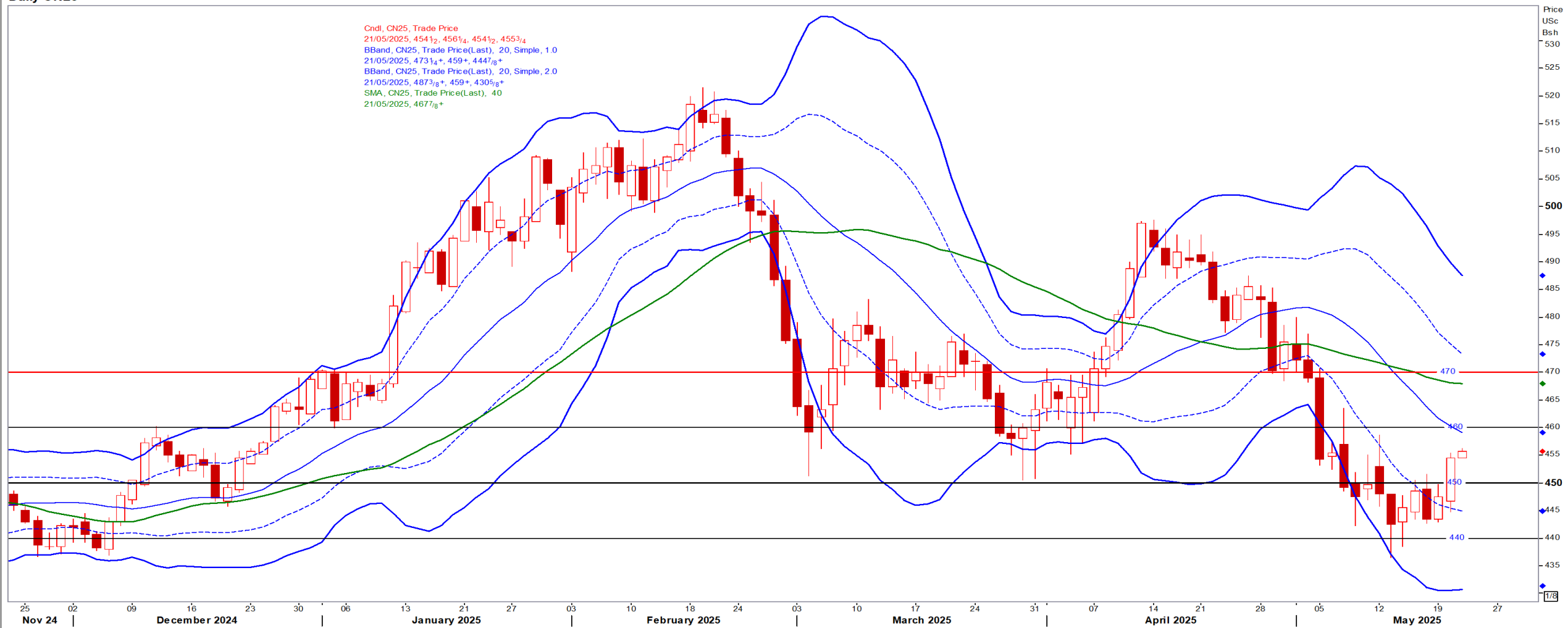
USD/ZAR Weekly: Medium-term ZAR bullish < R18.20

- [illegible]

USA Corn

Jul25 Daily: Contract status bearish < \$4.70

Daily CN25



White Maize

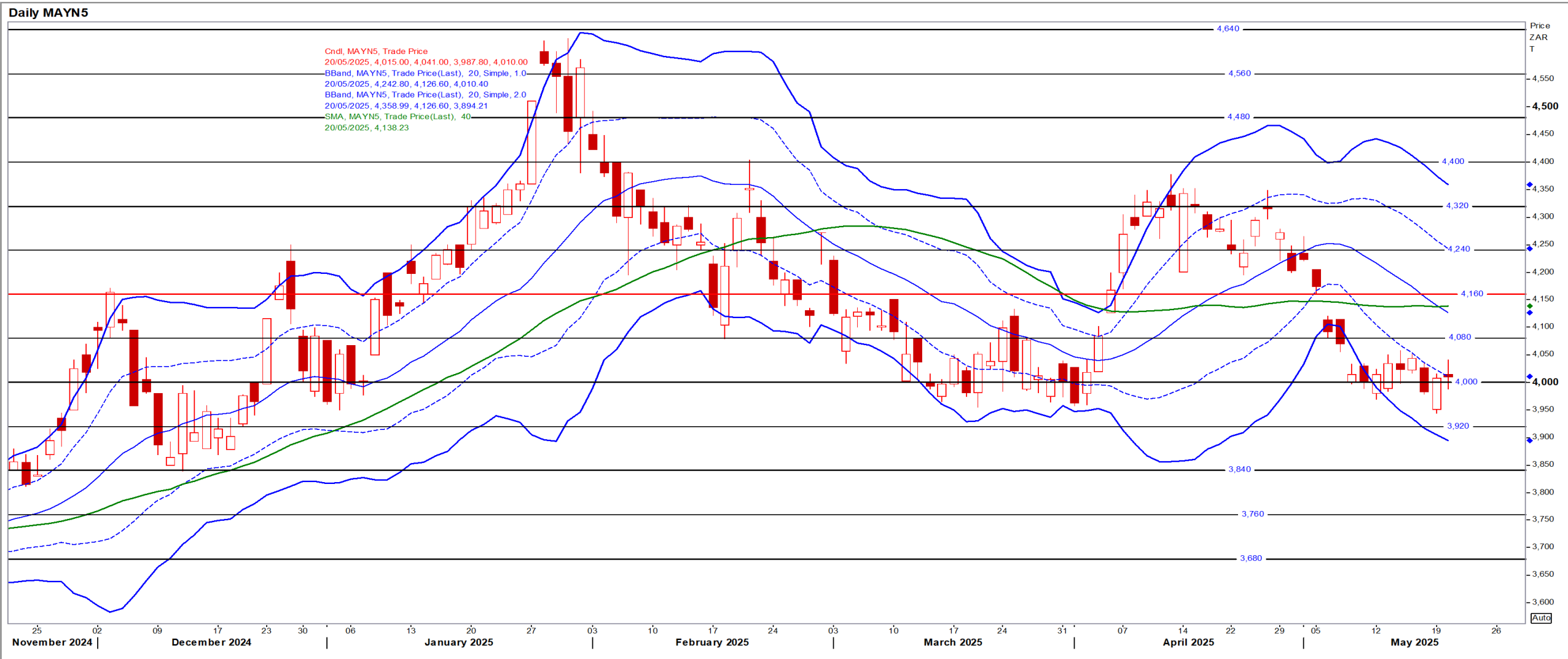
Jul25 Daily: Contract status bearish < R4600

Daily MAWN5



Yellow Maize

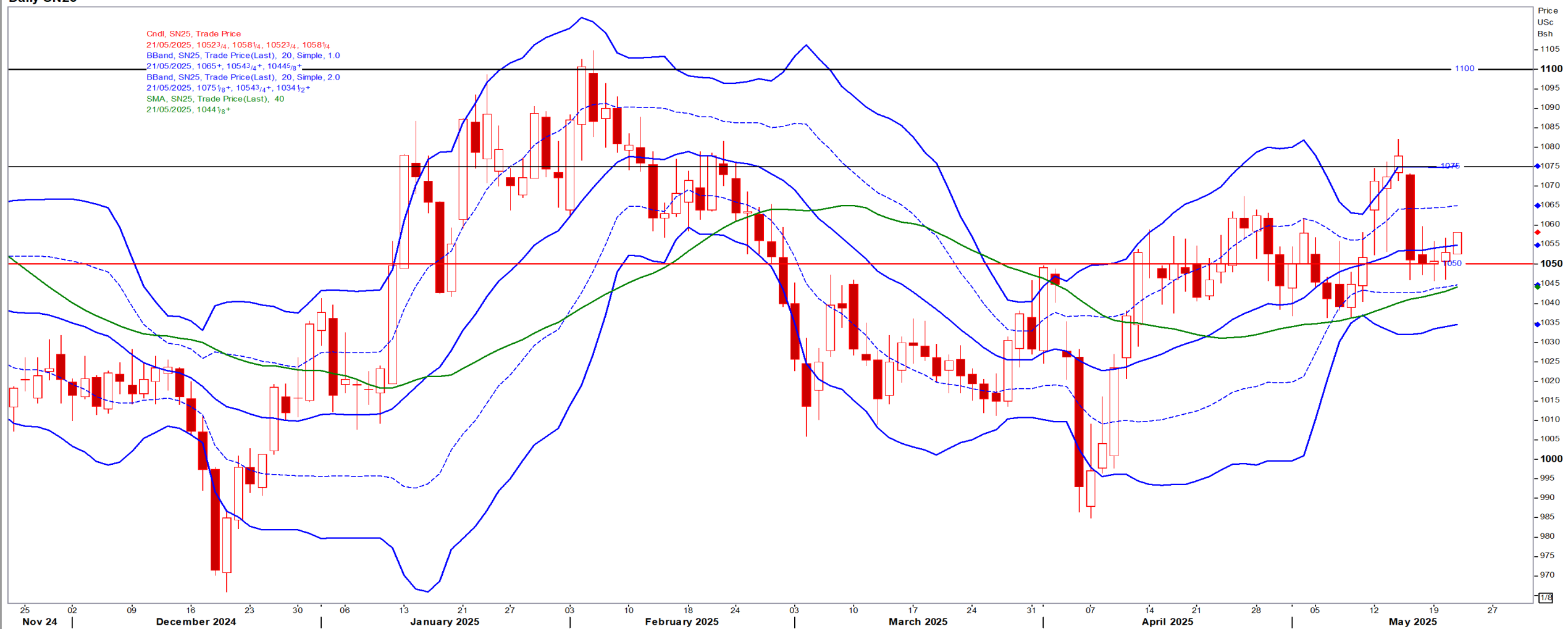
Jul25 Daily: Contract status bearish < R4160



USA Soya

Jul25 Daily: Contract status bullish > \$10.50

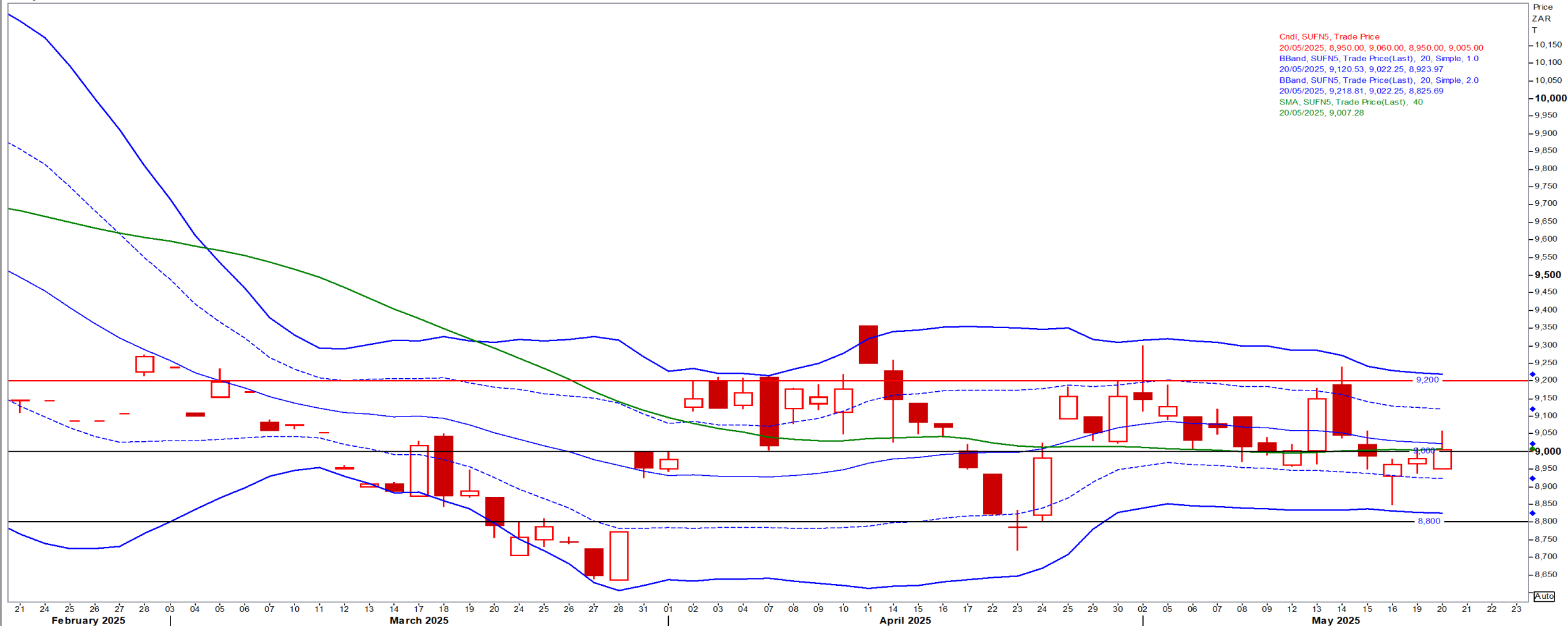
Daily SN25



Suns

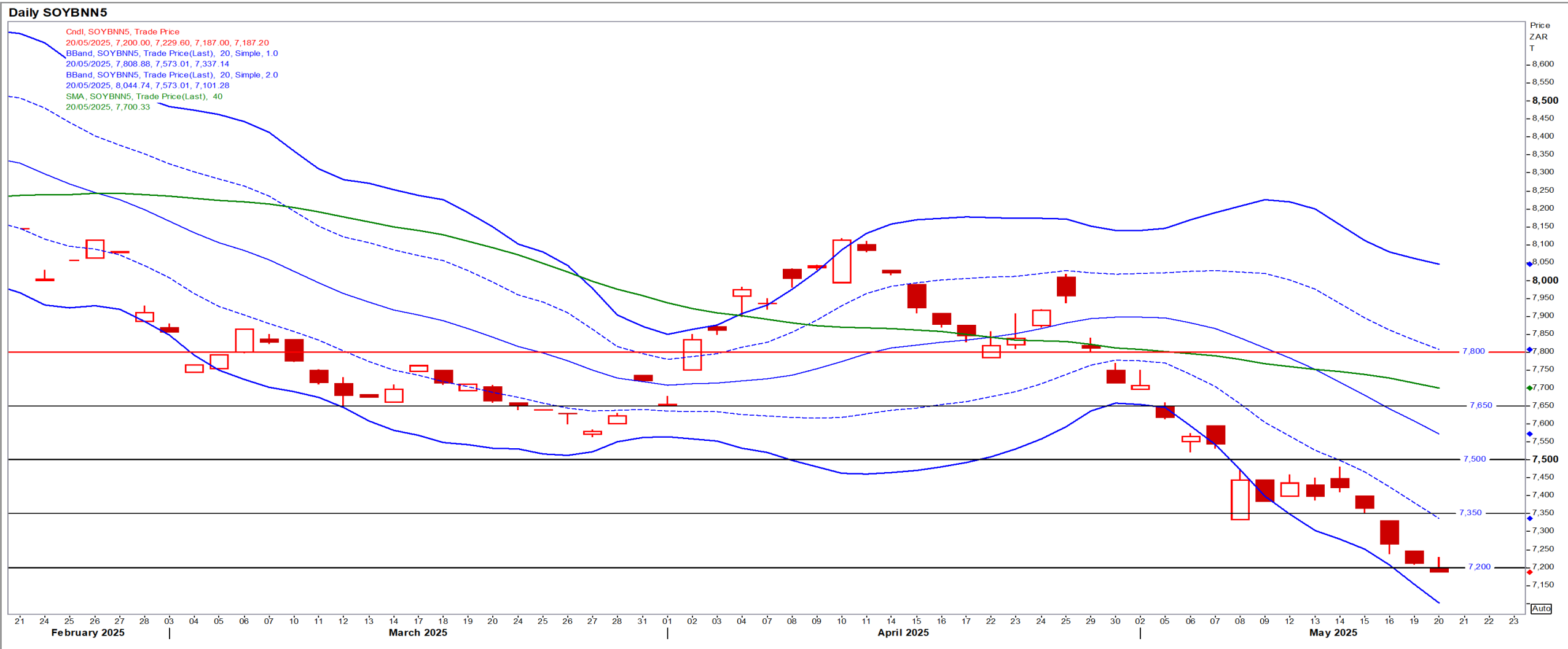
Jul25 Daily: Contract status very bearish < R9200

Daily SUFN5



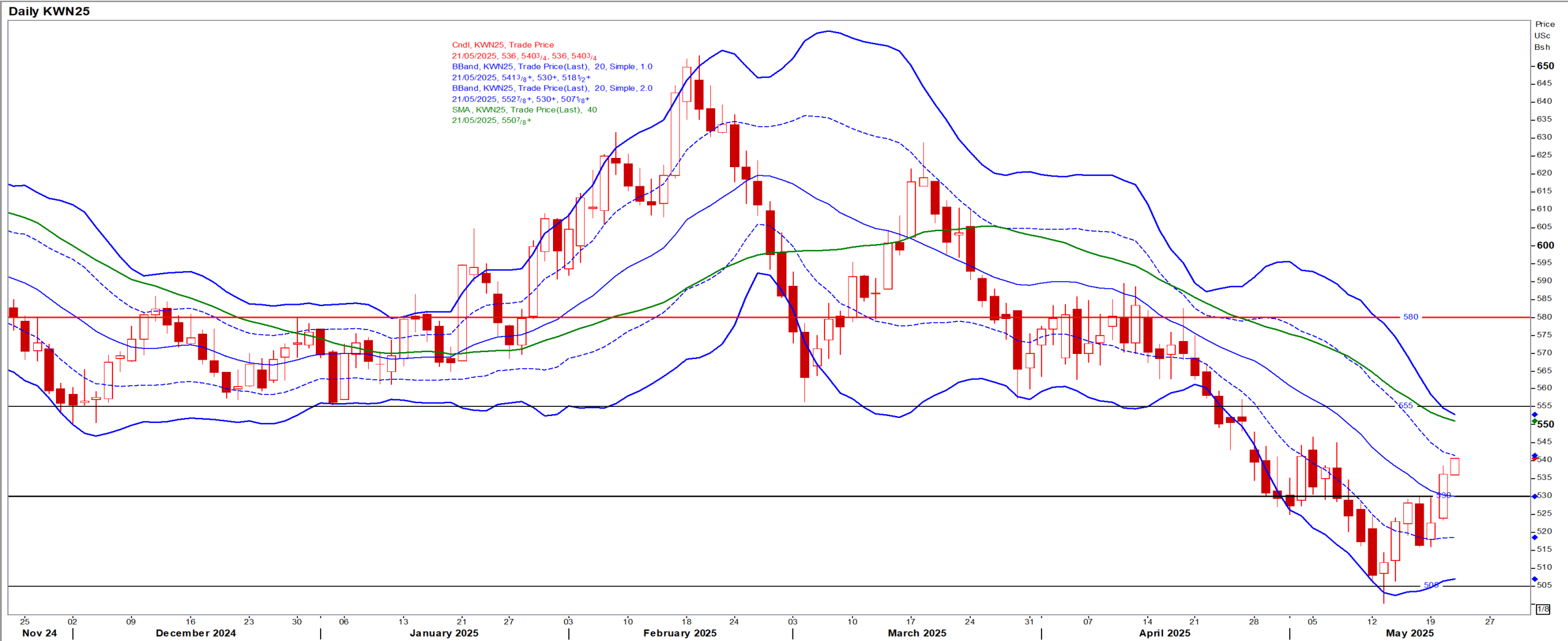
SA Soya

Jul25 Daily: Contract status very bearish < R7500



US KANSAS Wheat

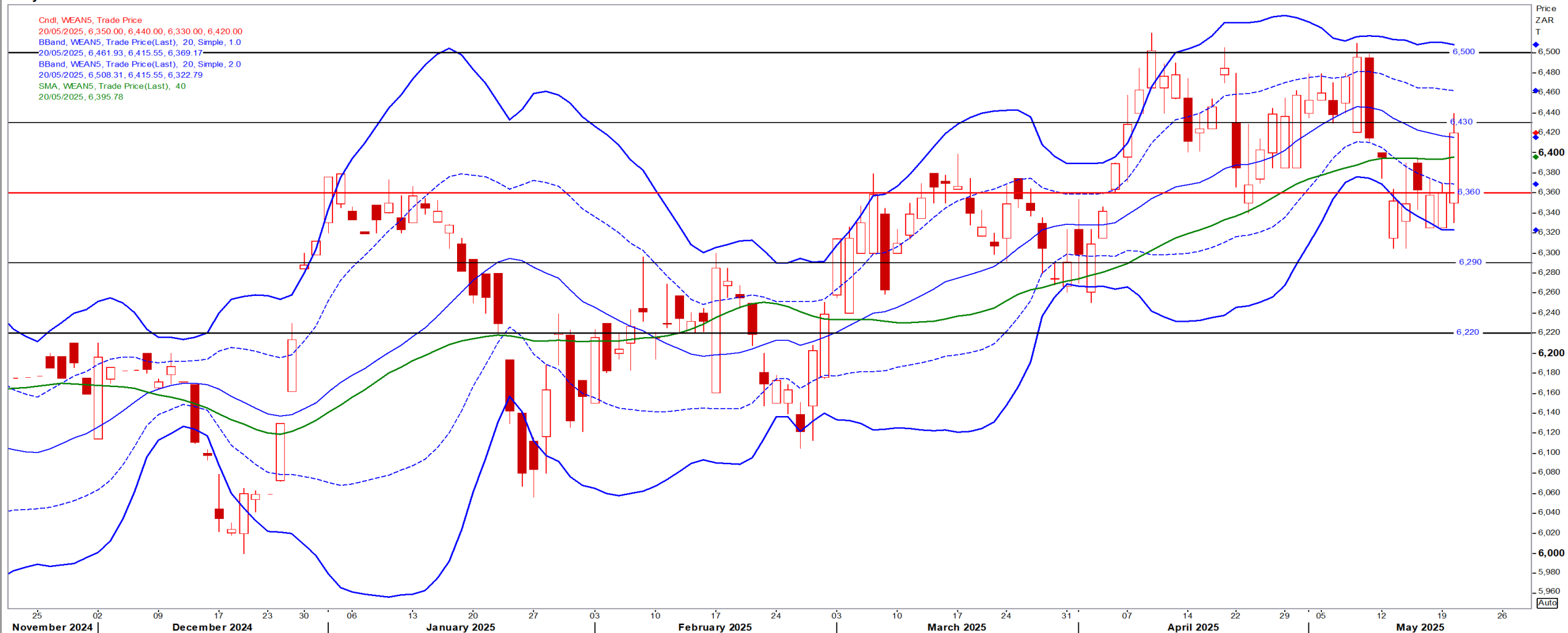
Jul25 Daily: Contract very bearish < \$5.55



SA Wheat

Jul25 Daily: Contract status bullish > R6360

Daily WEAN5



Weather

SA & US Medium-term Precipitation Forecasts

Precipitation Forecasts

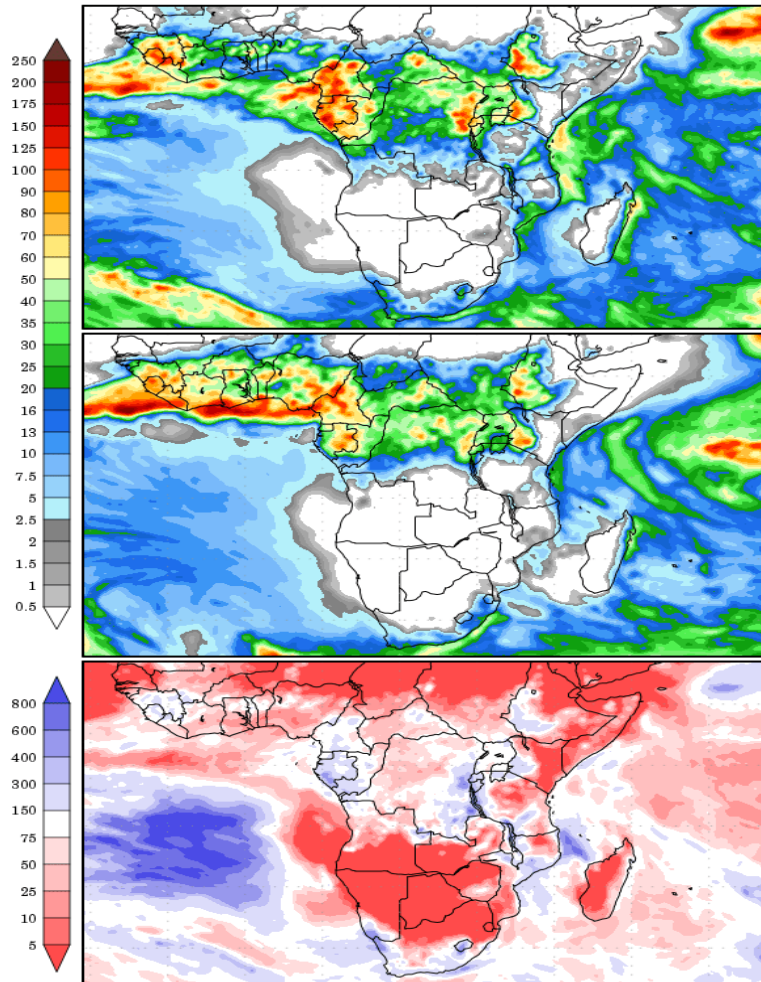
Precipitation (mm)
during the period:

???, 19 MAY 2025 at 00Z
-to-
???, 27 MAY 2025 at 00Z

???, 27 MAY 2025 at 00Z
-to-
???, 04 JUN 2025 at 00Z

Precipitation (% of normal)
during the first period:

???, 19 MAY 2025 at 00Z
-to-
???, 27 MAY 2025 at 00Z



Precipitation forecasts from the National Centers for Environmental Prediction.
Normal rainfall derived from Xie-Arkin (CMAP) Monthly Climatology for 1979-2003.
Forecast Initialization Time: 00Z19MAY2025

GrADS/COLA

GrADS/COLA

Precipitation Forecasts

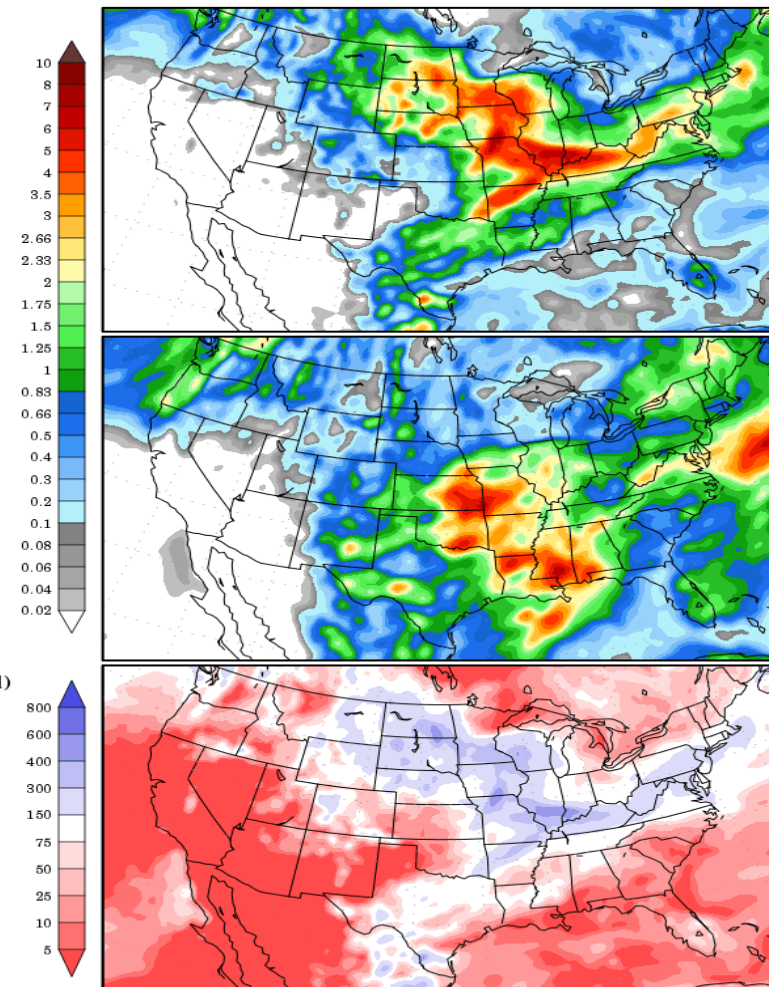
Precipitation (in)
during the period:

???, 19 MAY 2025 at 00Z
-to-
???, 27 MAY 2025 at 00Z

???, 27 MAY 2025 at 00Z
-to-
???, 04 JUN 2025 at 00Z

Precipitation (% of normal)
during the first period:

???, 19 MAY 2025 at 00Z
-to-
???, 27 MAY 2025 at 00Z



Precipitation forecasts from the National Centers for Environmental Prediction.
Normal rainfall derived from Xie-Arkin (CMAP) Monthly Climatology for 1979-2003.
Forecast Initialization Time: 00Z19MAY2025