

Daily market
Report
14 May 25



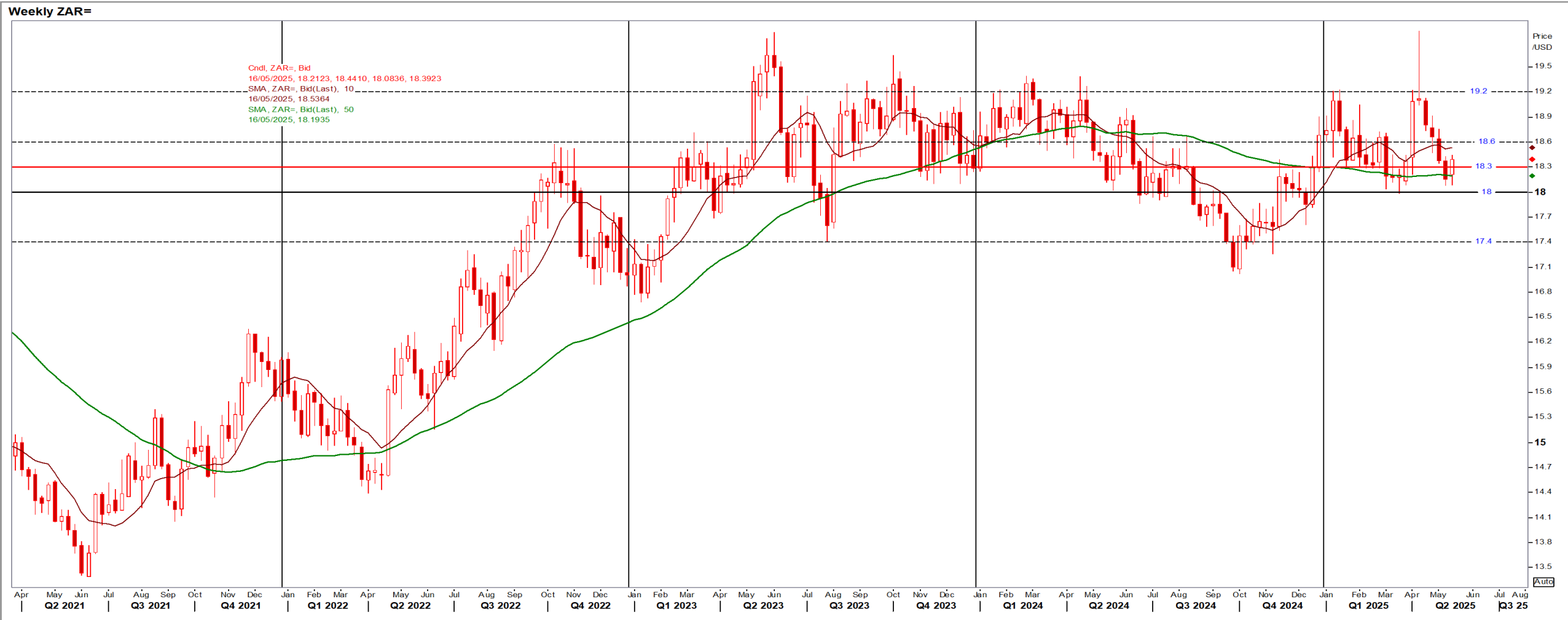
Parity Movements (implied price moves)

USA Movement (Overnight)		Cents	Currencies	14-May-25	08:04:11
CORN CBOT (Jul25)	442.75	-0.25	R/\$ last	R 18.2906	0.0021
SOY CBOT (Jul25)	1,080.25	14.50	Euro=	\$ 1.1188	0.0081
W1 CBOT (Jul25)	517.75	10.50	GOLD	\$ 3,234	-18.2053
W2 KCBT (Jul25)	512.75	10.00	BRENT	\$ 66.30	1.05
BlackSea Wheat (Near)	217.00	0.00			
Index Change					
Maize (Jul25)	3,188	R -1.43	Wheat CBOT (Jul25)	3,480	R 70.96
Soya (Jul25)	7,259	R 98.26	Wheat Kansas (Jul25)	3,446	R 67.59
BlackSea Wheat Near	3,969	0	RAND EFFECT ON WHEAT PARITY	3,379	0.39

South African Rand (ZAR)

USD/ZAR Weekly: Medium-term ZAR bearish > R18.20

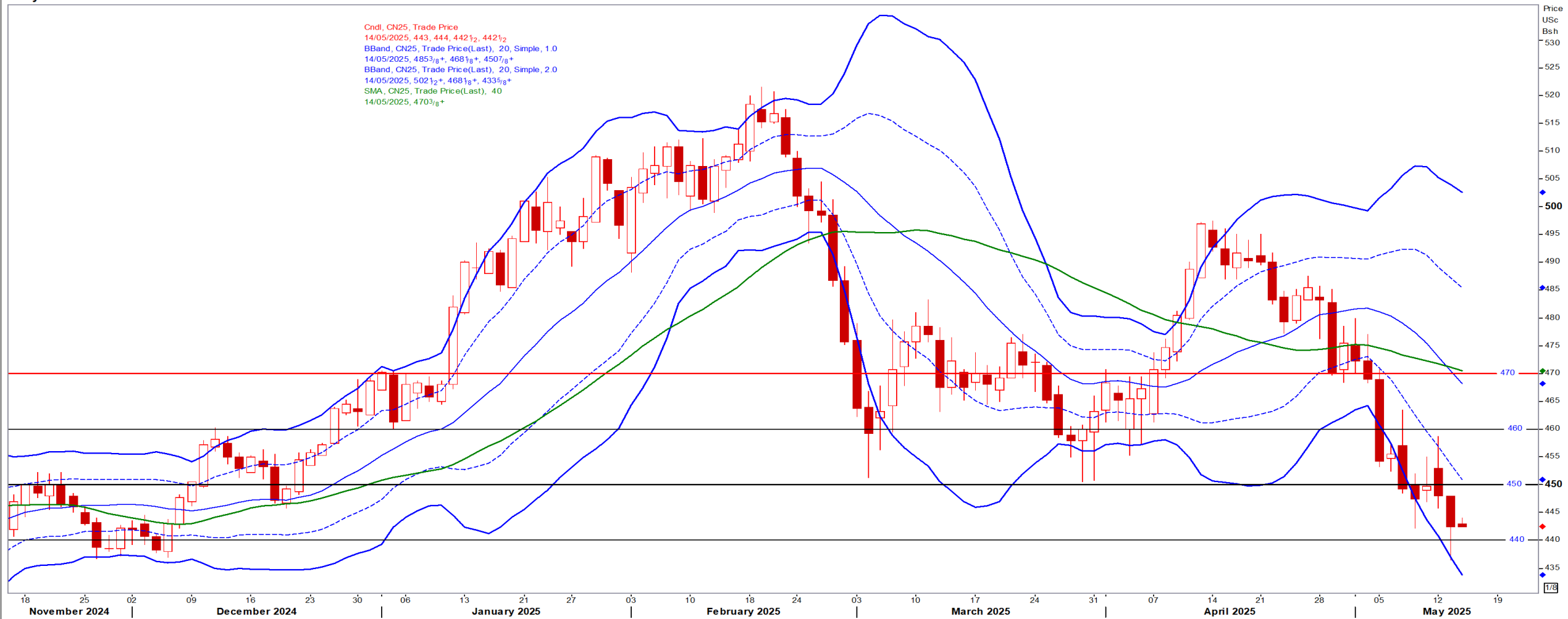
- ZAR slips on rise in local unemployment data – unemployment up from 31.90% Q4-24 to 32.90% Q1-25 – Reuters



USA Corn

Jul25 Daily: Contract status bearish < \$4.70

Daily CN25



White Maize

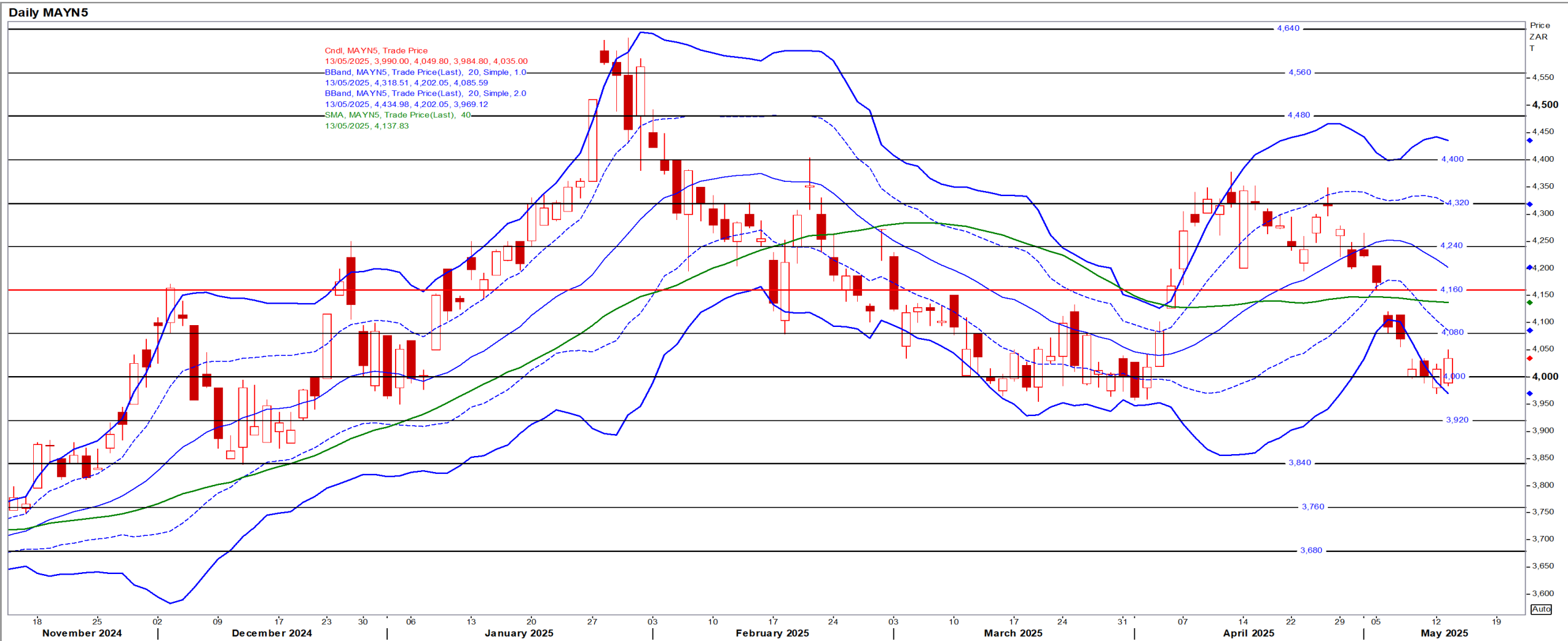
Jul25 Daily: Contract status very bearish < R4300

Daily MAWN5



Yellow Maize

Jul25 Daily: Contract status bearish < R4160



USA Soya

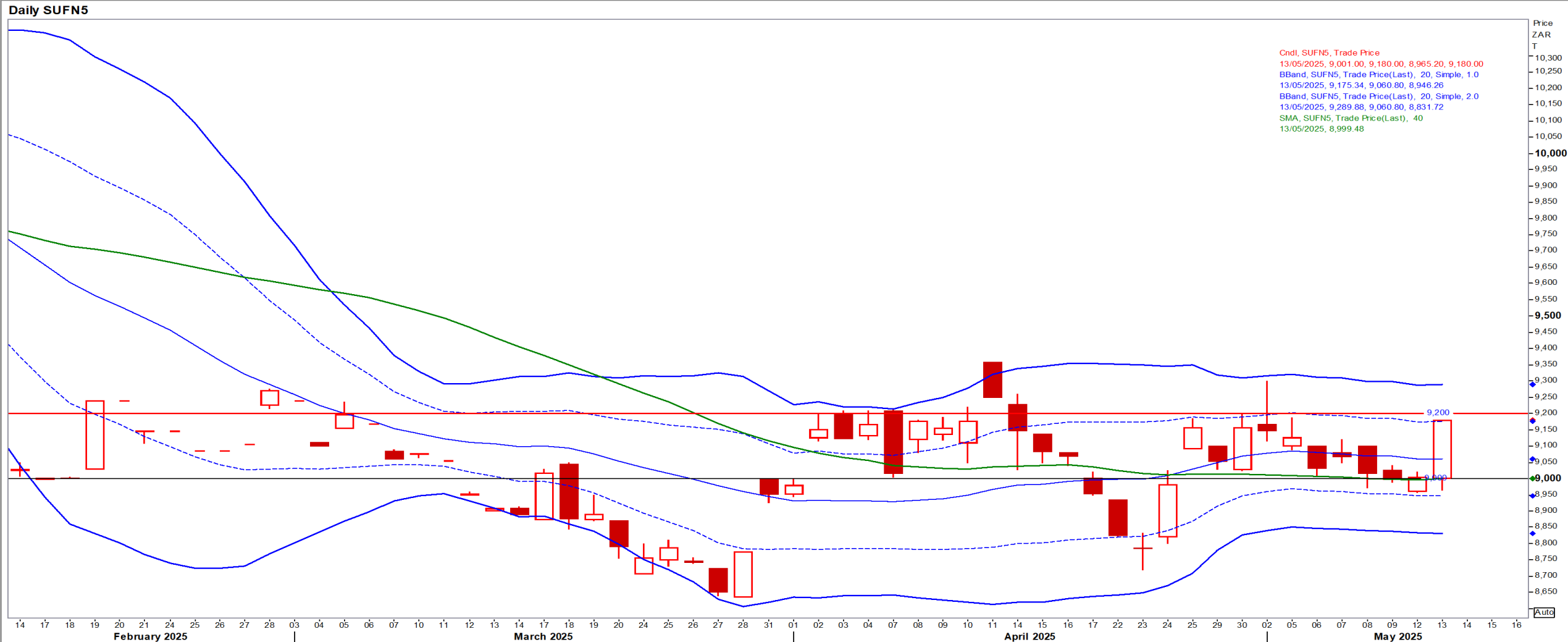
Jul25 Daily: Contract status bullish > \$10.50

Daily SN25



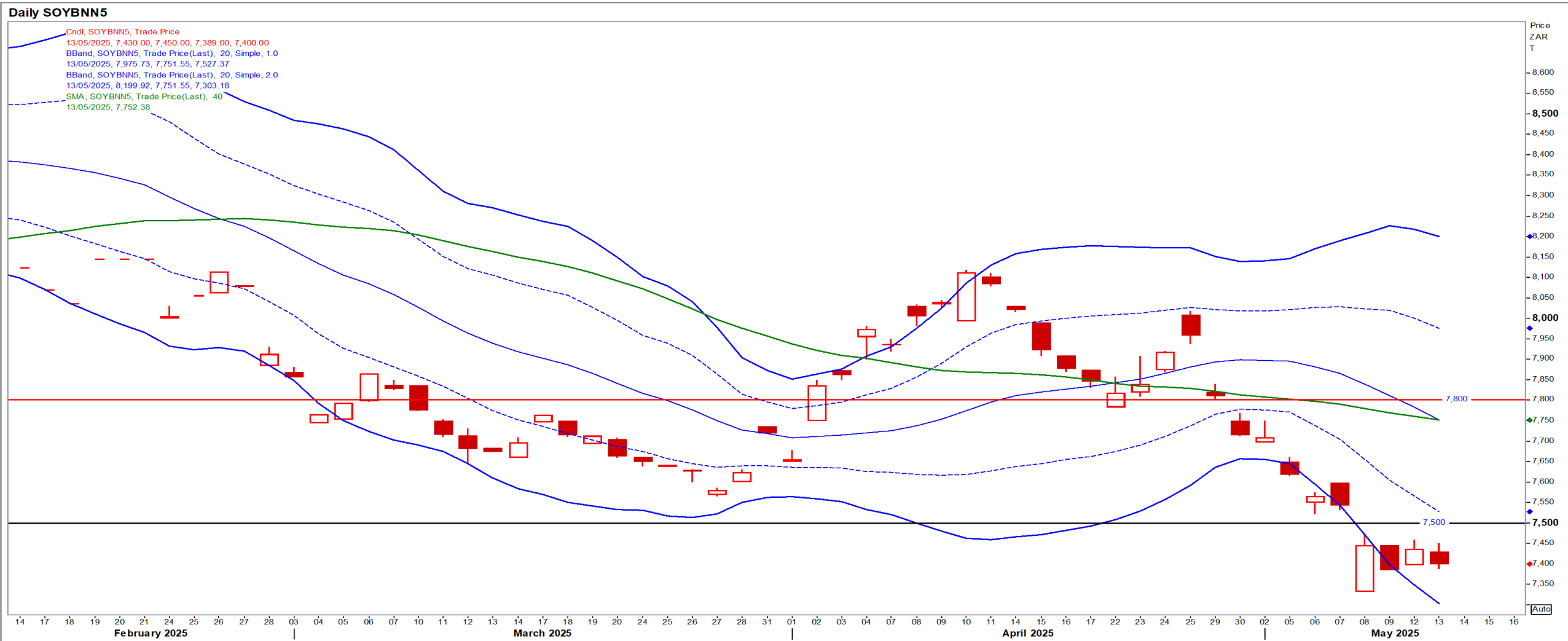
Suns

Jul25 Daily: Contract status very bearish < R9200



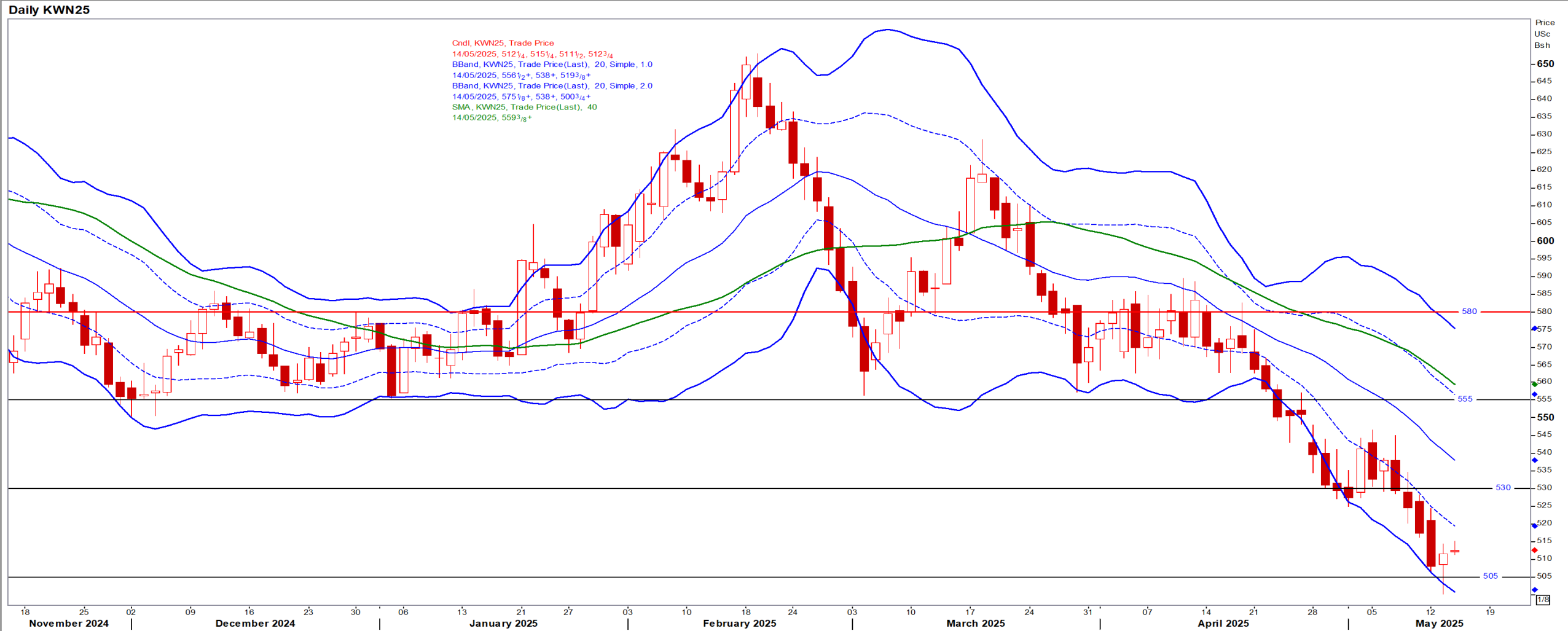
SA Soya

Jul25 Daily: Contract status bearish < R7800



US KANSAS Wheat

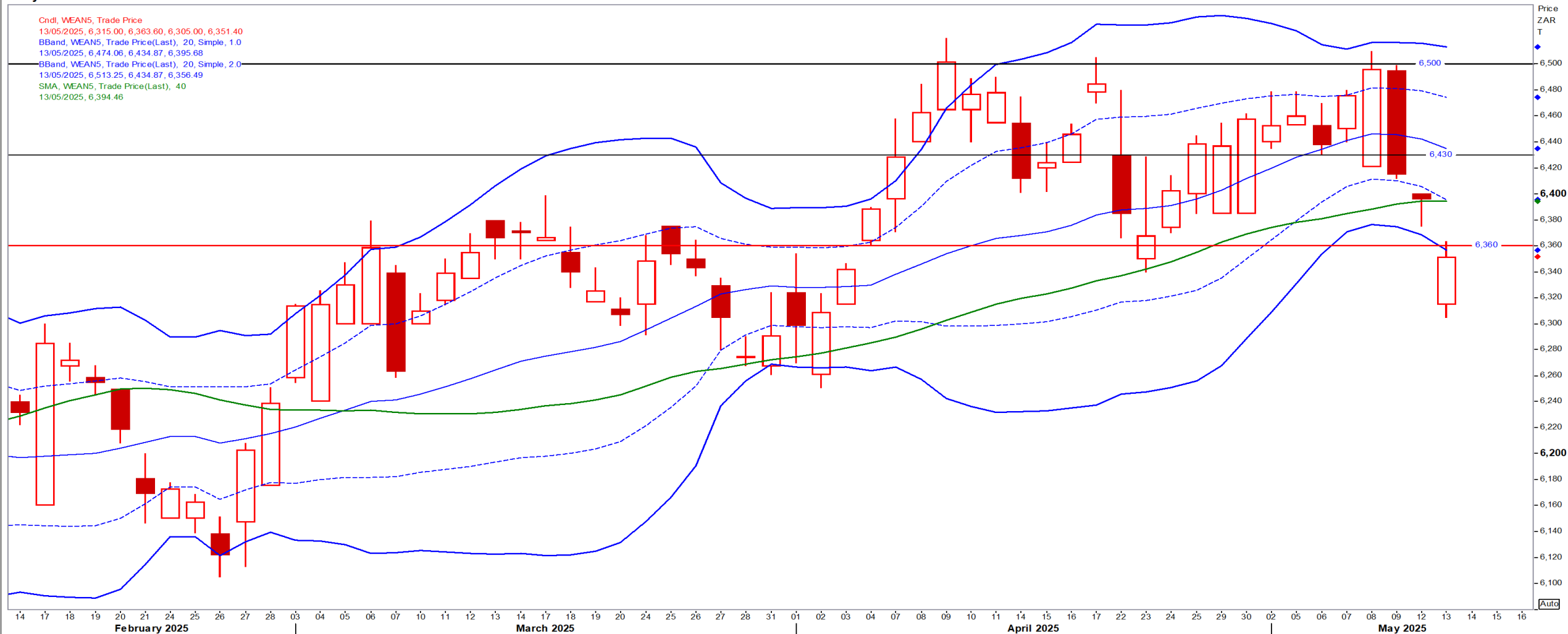
Jul25 Daily: Contract very bearish < \$5.55



SA Wheat

Jul25 Daily: Contract status bearish < R6360

Daily WEAN5



Weather

SA & US Medium-term Precipitation Forecasts

Precipitation Forecasts

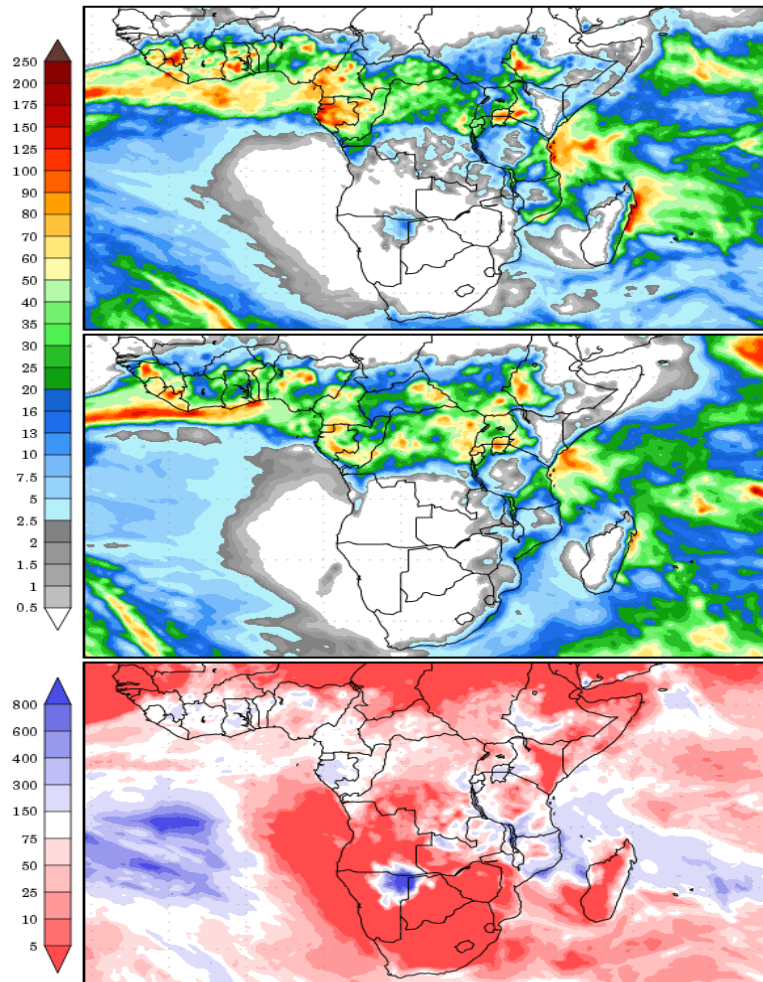
Precipitation (mm)
during the period:

???, 13 MAY 2025 at 00Z
-to-
???, 21 MAY 2025 at 00Z

???, 21 MAY 2025 at 00Z
-to-
???, 29 MAY 2025 at 00Z

Precipitation (% of normal)
during the first period:

???, 13 MAY 2025 at 00Z
-to-
???, 21 MAY 2025 at 00Z



Precipitation forecasts from the National Centers for Environmental Prediction.
Normal rainfall derived from Xie-Arkin (CMAP) Monthly Climatology for 1979-2003.
Forecast Initialization Time: 00Z13MAY2025

GrADS/COLA

Precipitation Forecasts

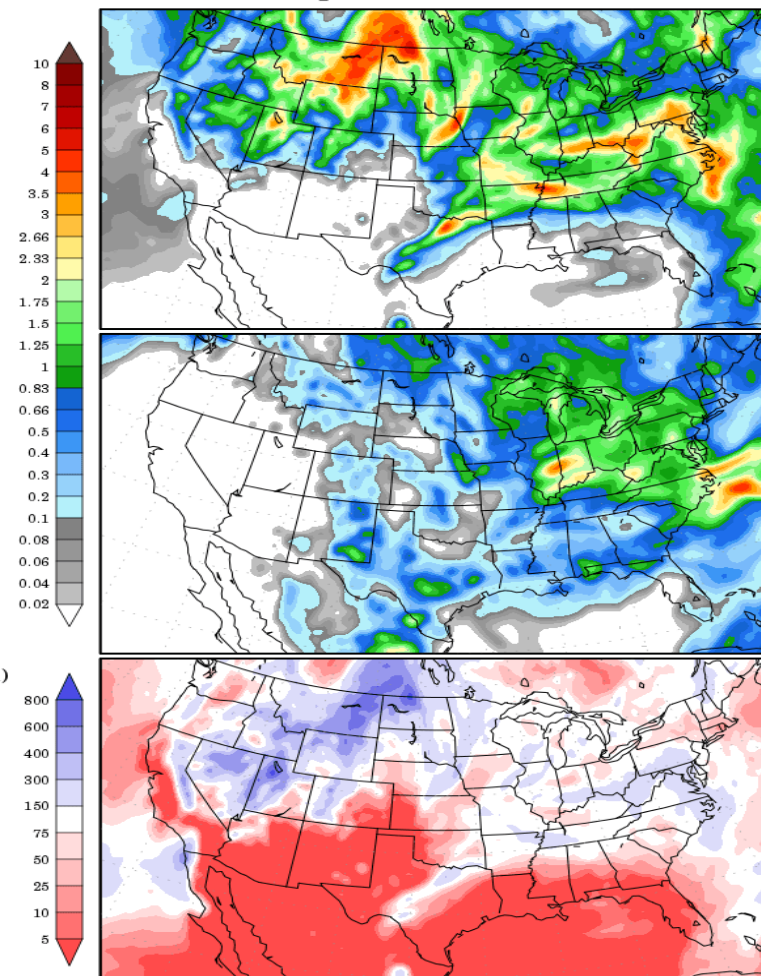
Precipitation (in)
during the period:

???, 13 MAY 2025 at 00Z
-to-
???, 21 MAY 2025 at 00Z

???, 21 MAY 2025 at 00Z
-to-
???, 29 MAY 2025 at 00Z

Precipitation (% of normal)
during the first period:

???, 13 MAY 2025 at 00Z
-to-
???, 21 MAY 2025 at 00Z



Precipitation forecasts from the National Centers for Environmental Prediction.
Normal rainfall derived from Xie-Arkin (CMAP) Monthly Climatology for 1979-2003.
Forecast Initialization Time: 00Z13MAY2025

GrADS/COLA