

Daily market
Report
12 May 25



Parity Movements (implied price moves)

USA Movement (Overnight)		Cents	Currencies	12-May-25	08:03:25
CORN CBOT (Jul25)	448.50	-3.25	R/\$ last	R 18.1922	0.0256
SOY CBOT (Jul25)	1,058.75	13.00	Euro=	\$ 1.1226	-0.0018
W1 CBOT (Jul25)	516.25	-16.00	GOLD	\$ 3,278	-45.4040
W2 KCBT (Jul25)	512.75	-14.75	BRENT	\$ 64.69	0.84
BlackSea Wheat (Near)	217.00	0.00			
Index Change					
Maize (Jul25)	3,212	R -18.72	Wheat CBOT (Jul25)	3,451	R -101.95
Soya (Jul25)	7,076	R 96.73	Wheat Kansas (Jul25)	3,427	R -93.63
BlackSea Wheat Near	3,948	6	RAND EFFECT ON WHEAT PARITY	3,526	4.96

USD/ZAR Weekly: Medium-term ZAR bearish > R18.20

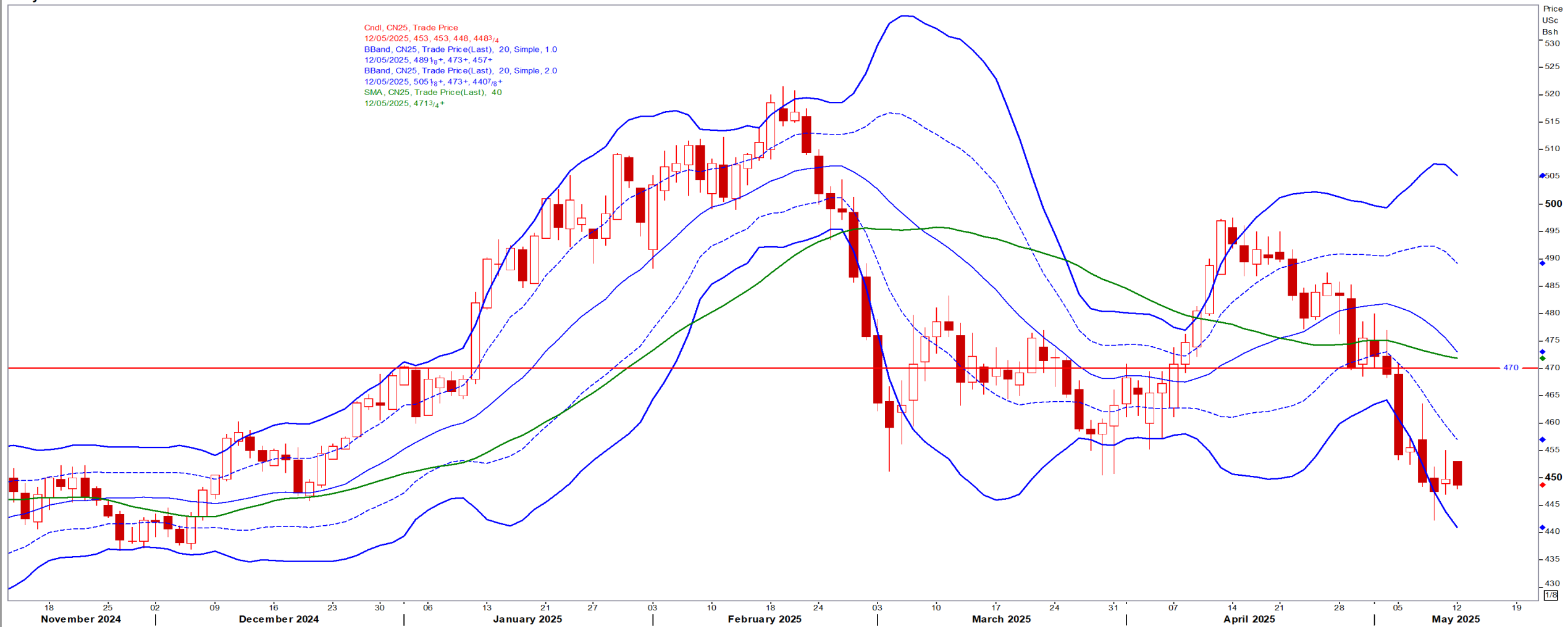
- Weekly ZAR=



USA Corn

Jul25 Daily: Contract status bearish < \$4.70

Daily CN25



White Maize

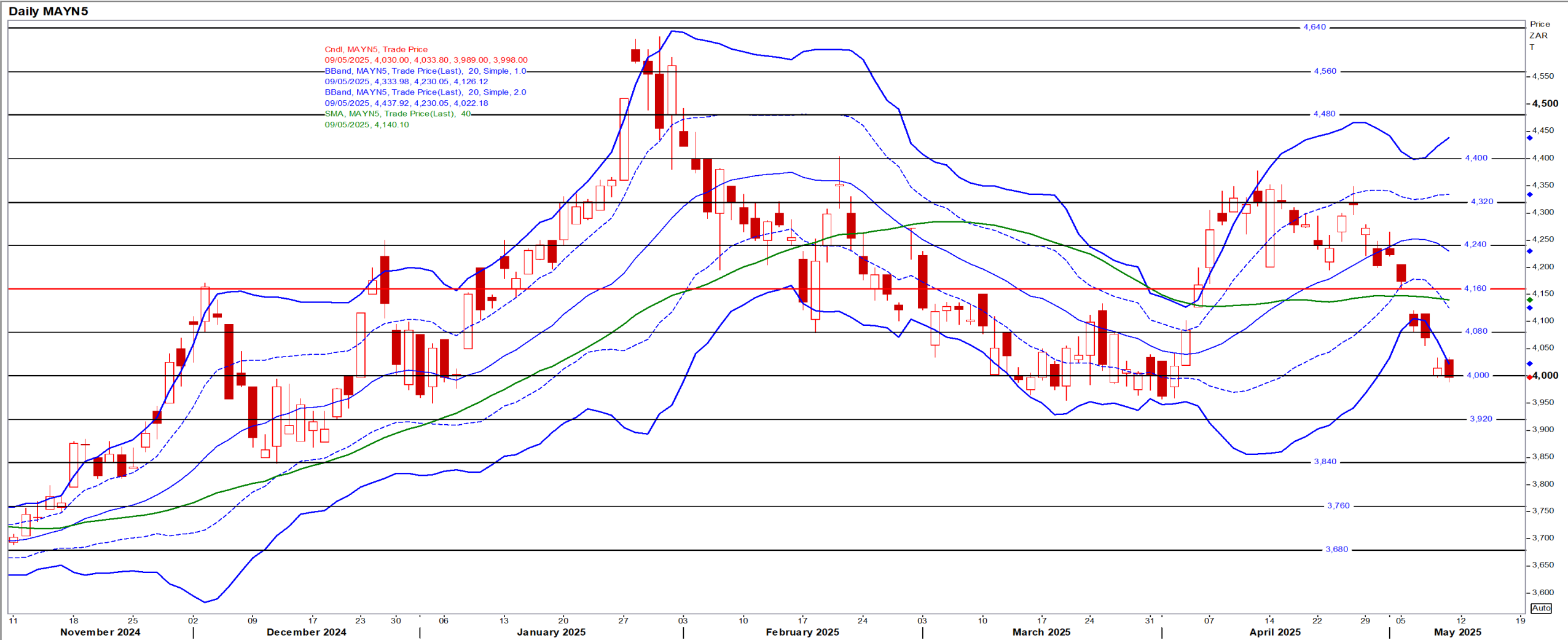
Jul25 Daily: Contract status very bearish < R4300

Daily MAWN5



Yellow Maize

Jul25 Daily: Contract status bearish < R4160



USA Soya

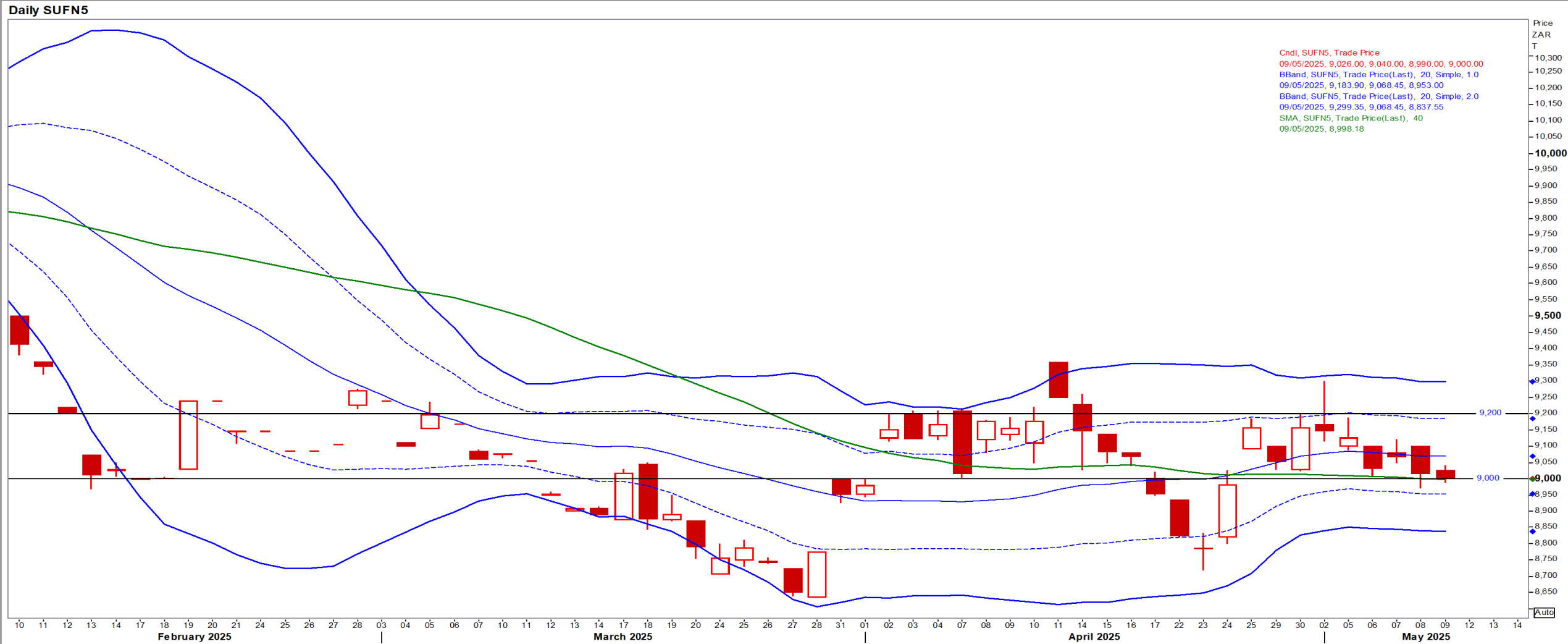
Jul25 Daily: Contract status bullish > \$10.50

Daily SN25



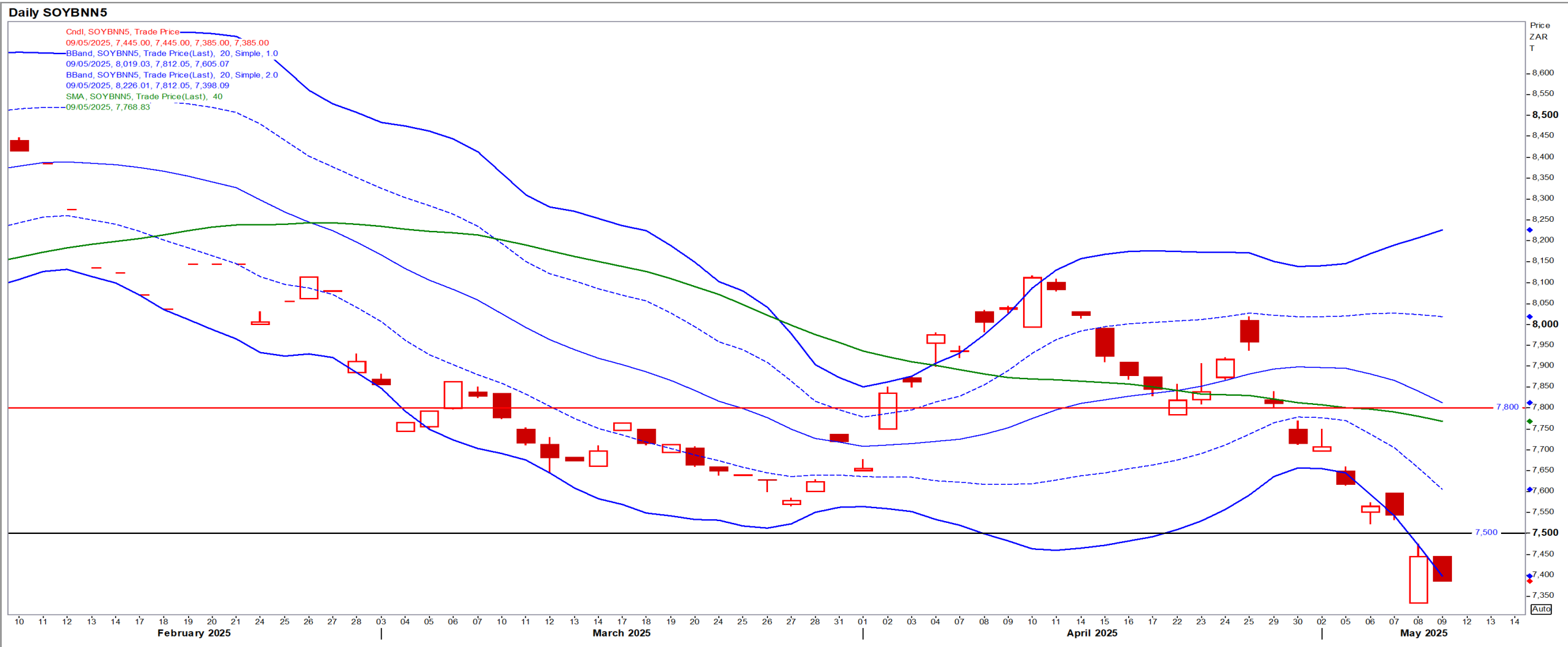
Suns

Jul25 Daily: Contract status very bearish < R9200



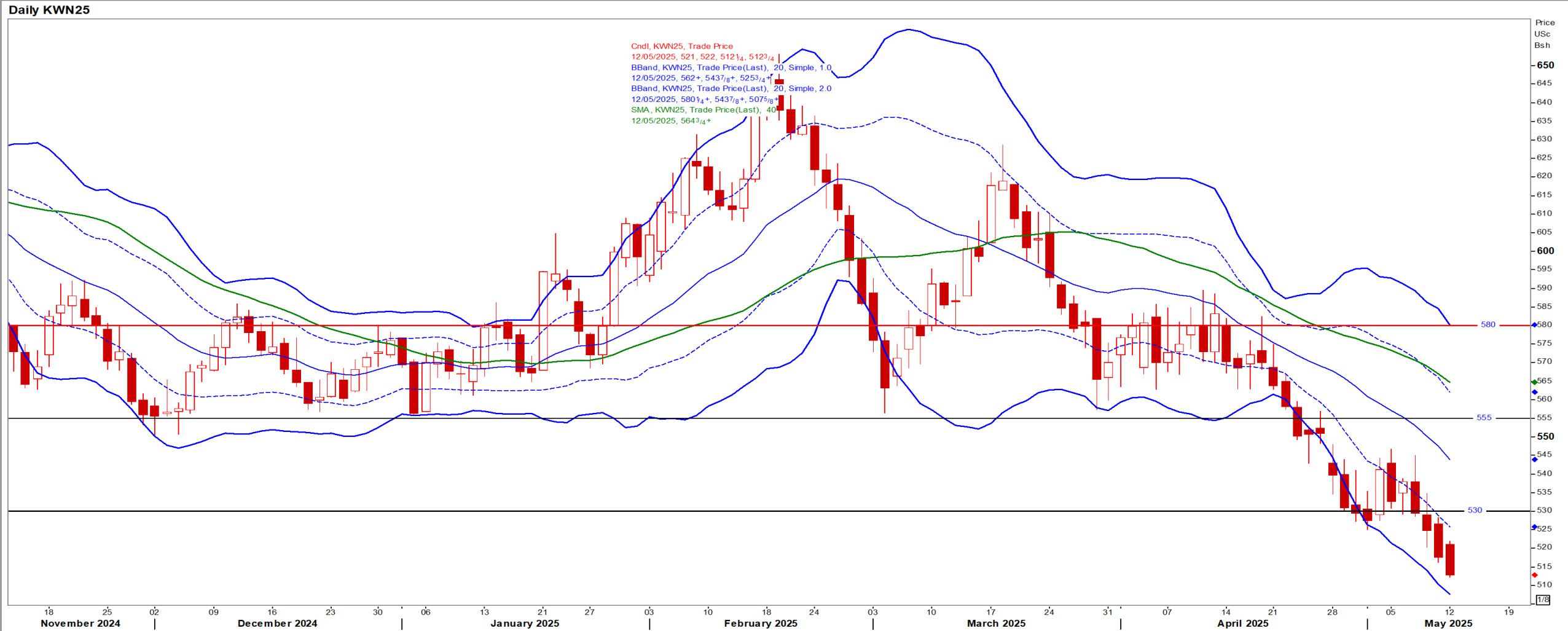
SA Soya

Jul25 Daily: Contract status bearish < R7800



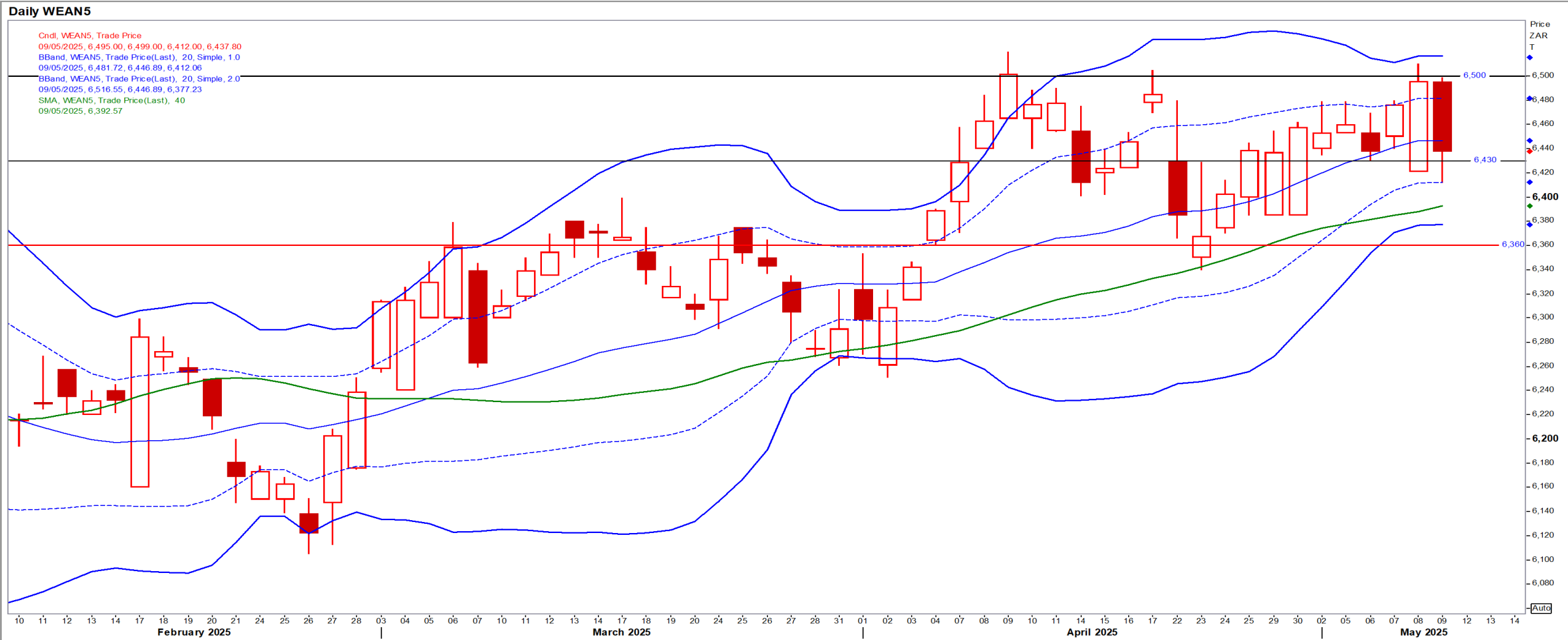
US KANSAS Wheat

Jul25 Daily: Contract very bearish < \$5.55



SA Wheat

Jul25 Daily: Contract status bullish > R6360



Weather

SA & US Medium-term Precipitation Forecasts

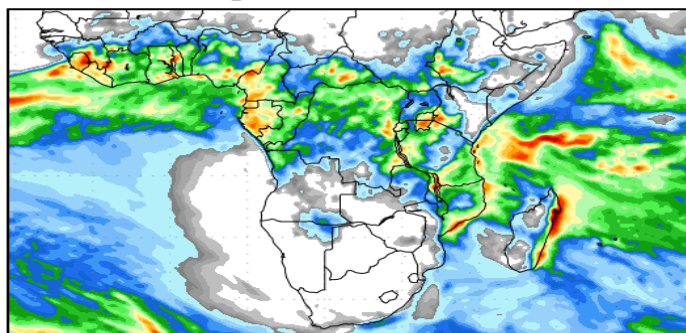
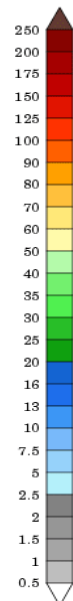
Precipitation Forecasts

Precipitation (mm)
during the period:

???, 11 MAY 2025 at 00Z

-to-

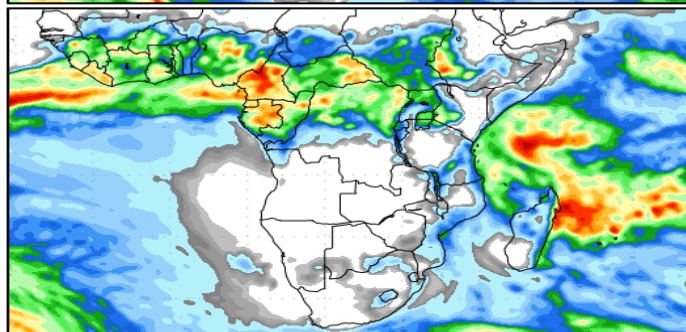
???, 19 MAY 2025 at 00Z



???, 19 MAY 2025 at 00Z

-to-

???, 27 MAY 2025 at 00Z

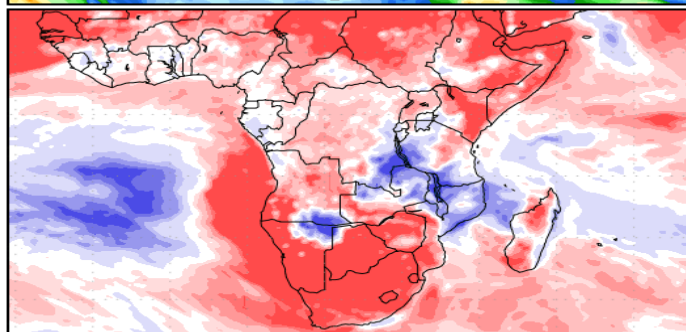
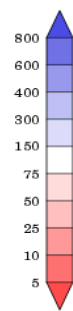


Precipitation (% of normal)
during the first period:

???, 11 MAY 2025 at 00Z

-to-

???, 19 MAY 2025 at 00Z



Precipitation forecasts from the National Centers for Environmental Prediction.
Normal rainfall derived from Xie-Arkin (CMAF) Monthly Climatology for 1979-2003.
Forecast Initialization Time: 00Z11MAY2025

GrADS/COLA

GrADS/COLA

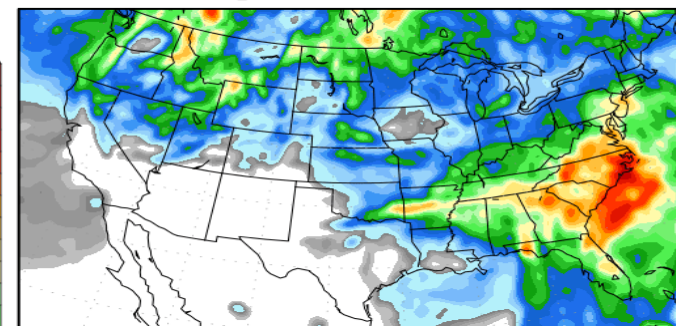
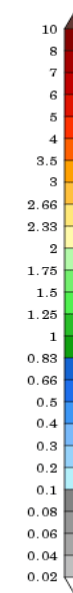
Precipitation Forecasts

Precipitation (in)
during the period:

???, 11 MAY 2025 at 00Z

-to-

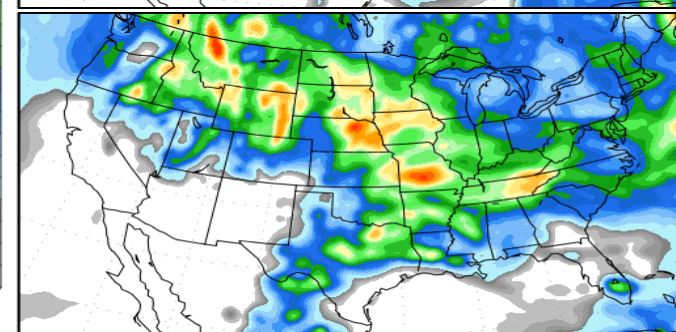
???, 19 MAY 2025 at 00Z



???, 19 MAY 2025 at 00Z

-to-

???, 27 MAY 2025 at 00Z

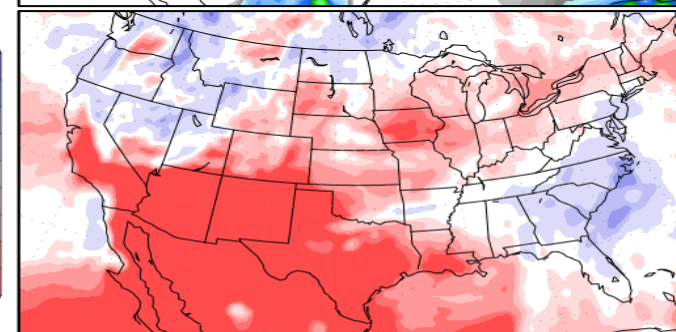
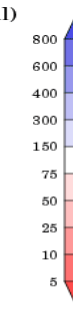


Precipitation (% of normal)
during the first period:

???, 11 MAY 2025 at 00Z

-to-

???, 19 MAY 2025 at 00Z



Precipitation forecasts from the National Centers for Environmental Prediction.
Normal rainfall derived from Xie-Arkin (CMAF) Monthly Climatology for 1979-2003.
Forecast Initialization Time: 00Z11MAY2025