

Daily market
Report
09 Apr 25

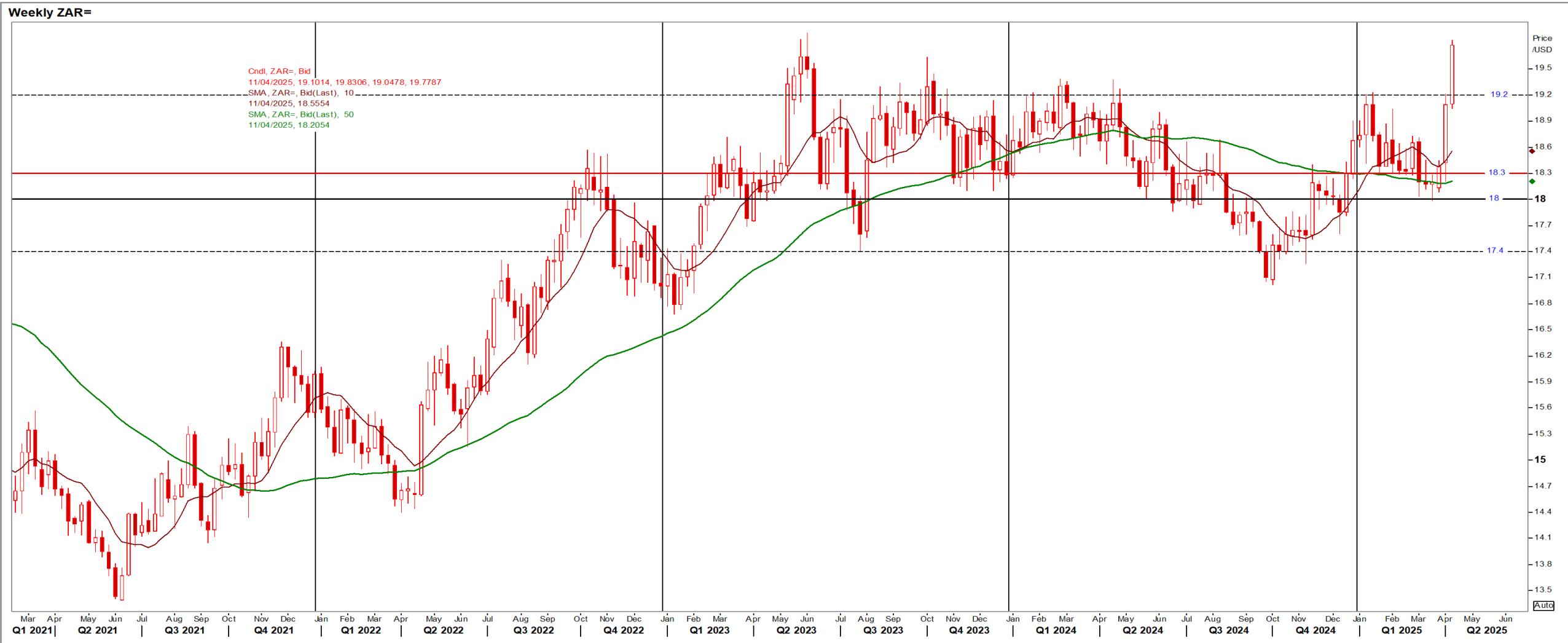


Parity Movements (implied price moves)

USA Movement (Overnight)		Cents	Currencies	09-Apr-25	08:06:01
CORN CBOT (Jul25)	474.00	1.00	R/\$ last	R 19.7864	0.3039
SOY CBOT (May25)	992.75	0.00	Euro=	\$ 1.1064	0.0146
W1 CBOT (May25)	538.00	-3.50	GOLD	\$ 3,019	12.2686
W2 KCBT (May25)	562.00	-0.50	BRENT	\$ 60.74	-3.59
BlackSea Wheat (Near)	226.00	0.00			
Index Change					
Maize (Jul25)	3,692	R 64.38	Wheat CBOT (May25)	3,911	R 35.02
Soya (May25)	7,217	R 110.84	Wheat Kansas (May25)	4,086	R 59.18
BlackSea Wheat Near	4,472	R 68.68	RAND EFFECT ON WHEAT PARITY	4,090	R 62.81

USD/ZAR Weekly: Medium-term ZAR very bearish > R19.20

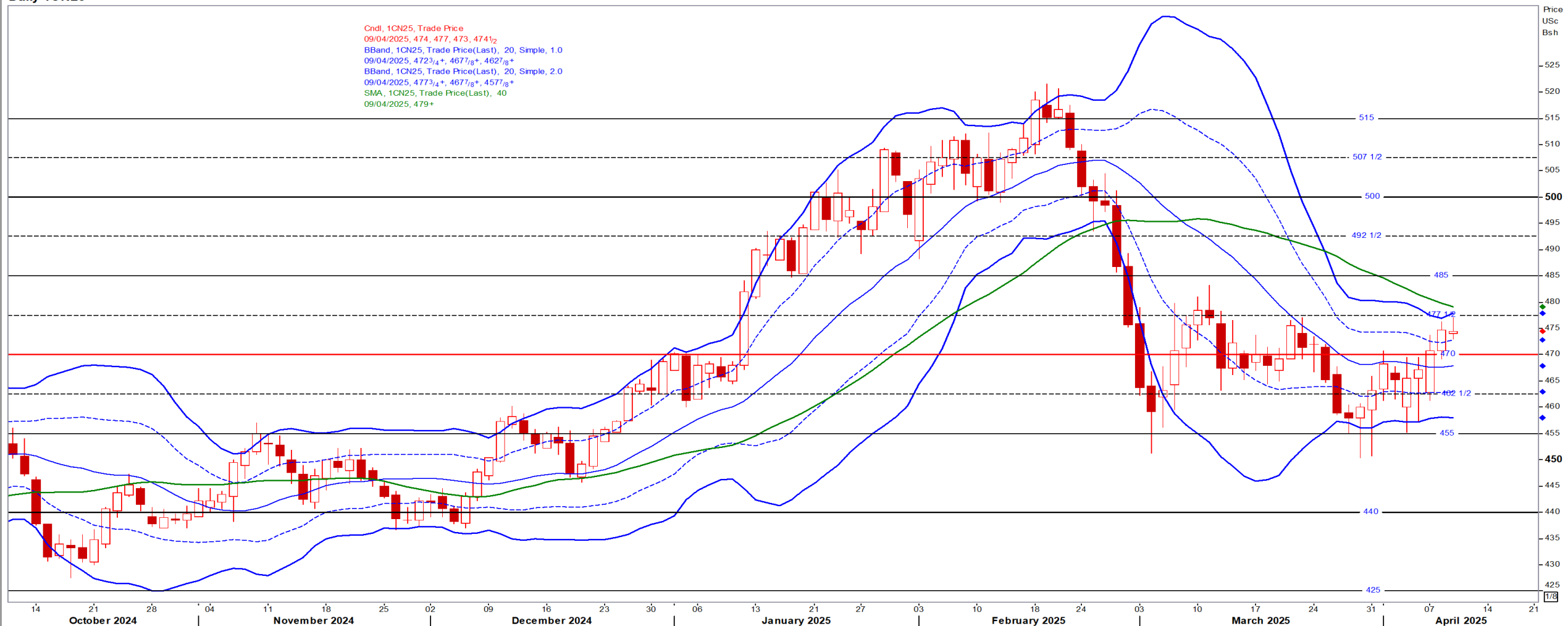
USD/ZAR Weekly: Medium-term ZAR very bearish > R19.20



USA Corn

Jul25 Daily: Contract status bullish > \$4.70

Daily 1CN25



White Maize

Jul25 Daily: Contract status bearish < R4600

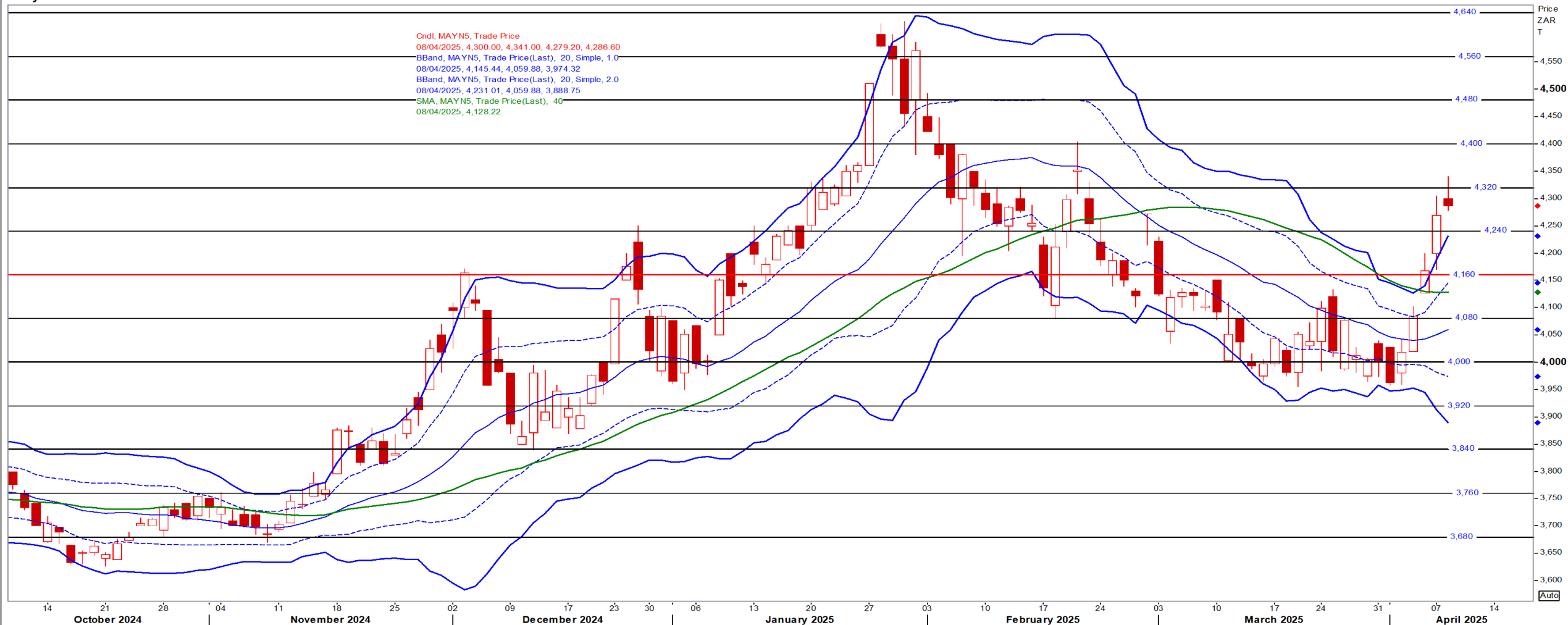
Daily MAWN5



Yellow Maize

Jul25 Daily: Contract status bullish > R4160

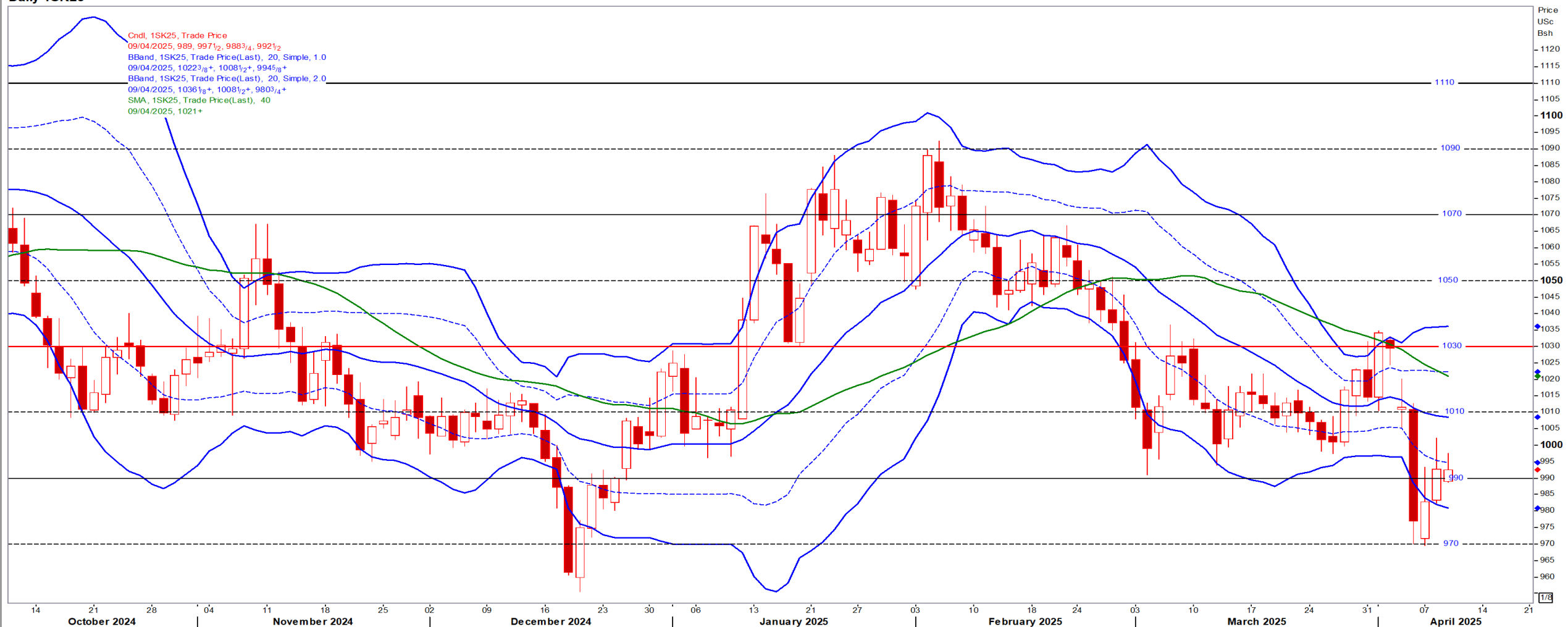
Daily MAYN5



USA Soya

May25 Daily: Contract status bearish < \$10.30

Daily 1SK25



Suns

May25 Daily: Contract status very bearish < R9000

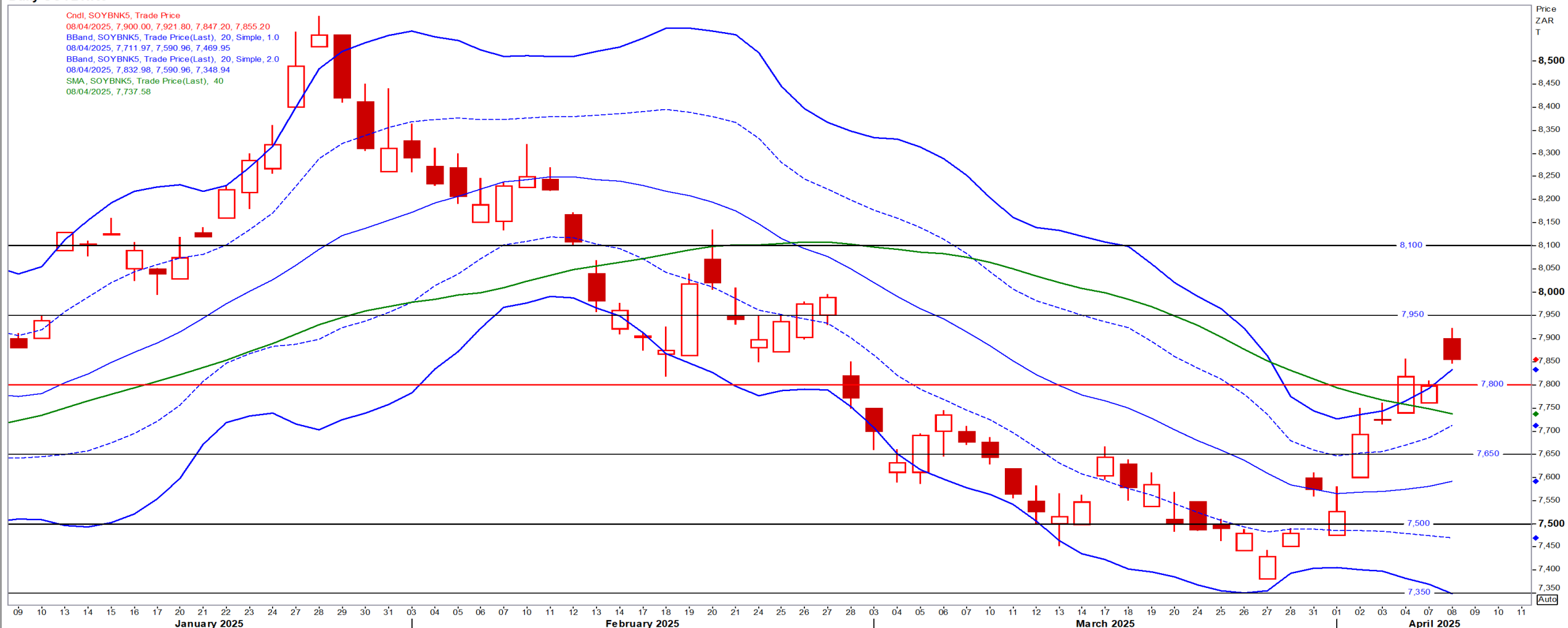
Daily SUFK5



SA Soya

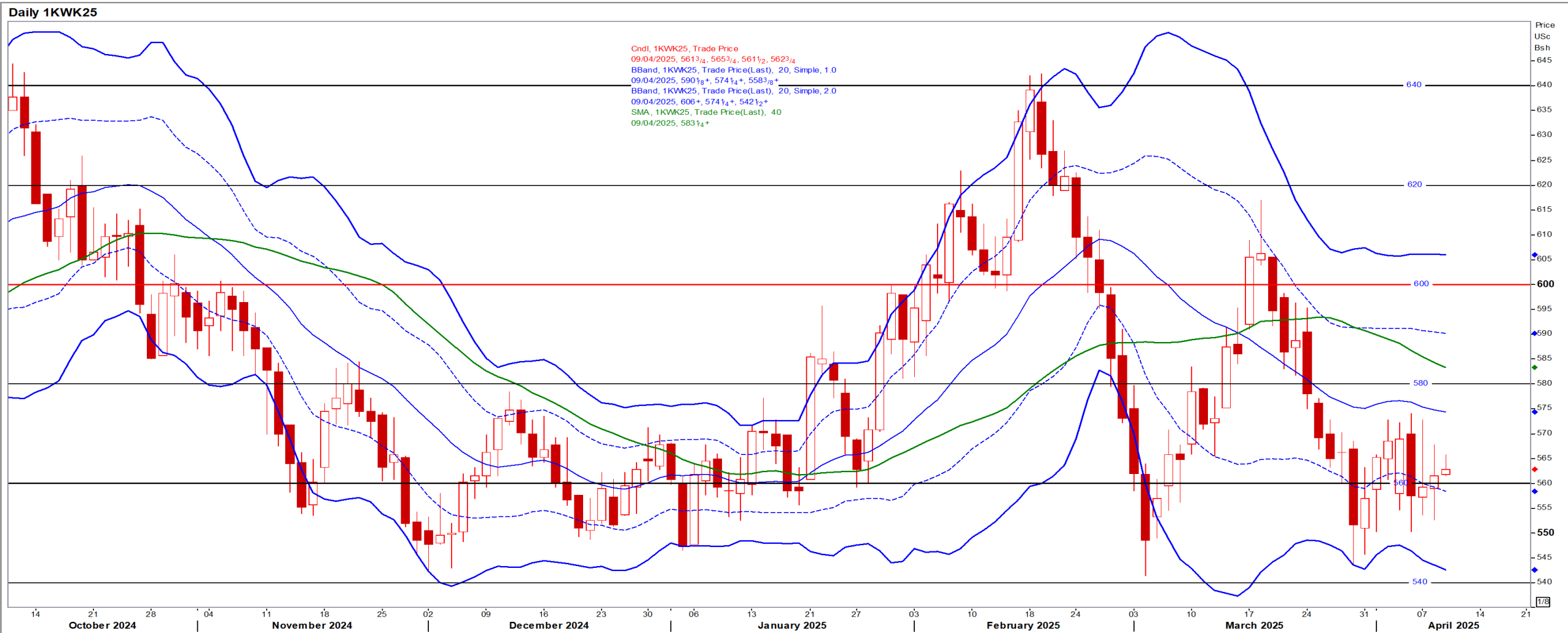
May25 Daily: Contract status bullish > R7800

Daily SOYBNK5



US KANSAS Wheat

May25 Daily: Contract bearish < \$6.00



SA Wheat

May25 Daily: Contract status bullish > R6160

Daily WEAK5

