

Daily market
Report
12 Mar 25



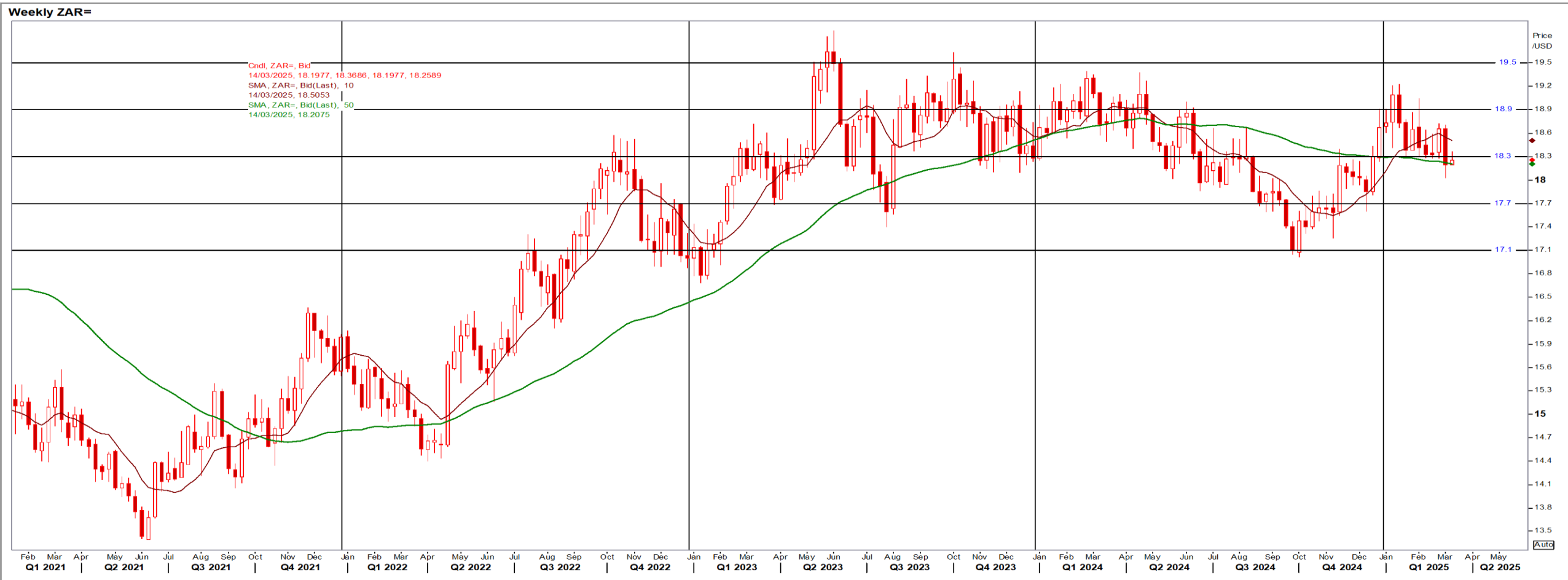
Parity Movements (implied price moves)

USA Movement (Overnight)	Cents	Currencies	12-Mar-25	08:00:48	
CORN CBOT (Jul25)	476.50	-2.75	R/\$ last	R 18.2689	0.0111
SOY CBOT (May25)	1,012.00	-4.75	Euro=	\$ 1.0902	-0.0006
W1 CBOT (May25)	560.75	2.00	GOLD	\$ 2,916	4.5400
W2 KCBT (May25)	576.25	2.50	BRENT	\$ 69.93	0.14
BlackSea Wheat (Near)	213.00	0.00			
Index Change					
Maize (Jul25)	3,427	R -17.68	Wheat CBOT (May25)	3,764	R 15.70
Soya (May25)	6,793	R -27.74	Wheat Kansas (May25)	3,868	R 19.12
BlackSea Wheat Near	3,891	R 2.36	RAND EFFECT ON WHEAT PARITY	3,851	R 2.34

South African Rand (ZAR)

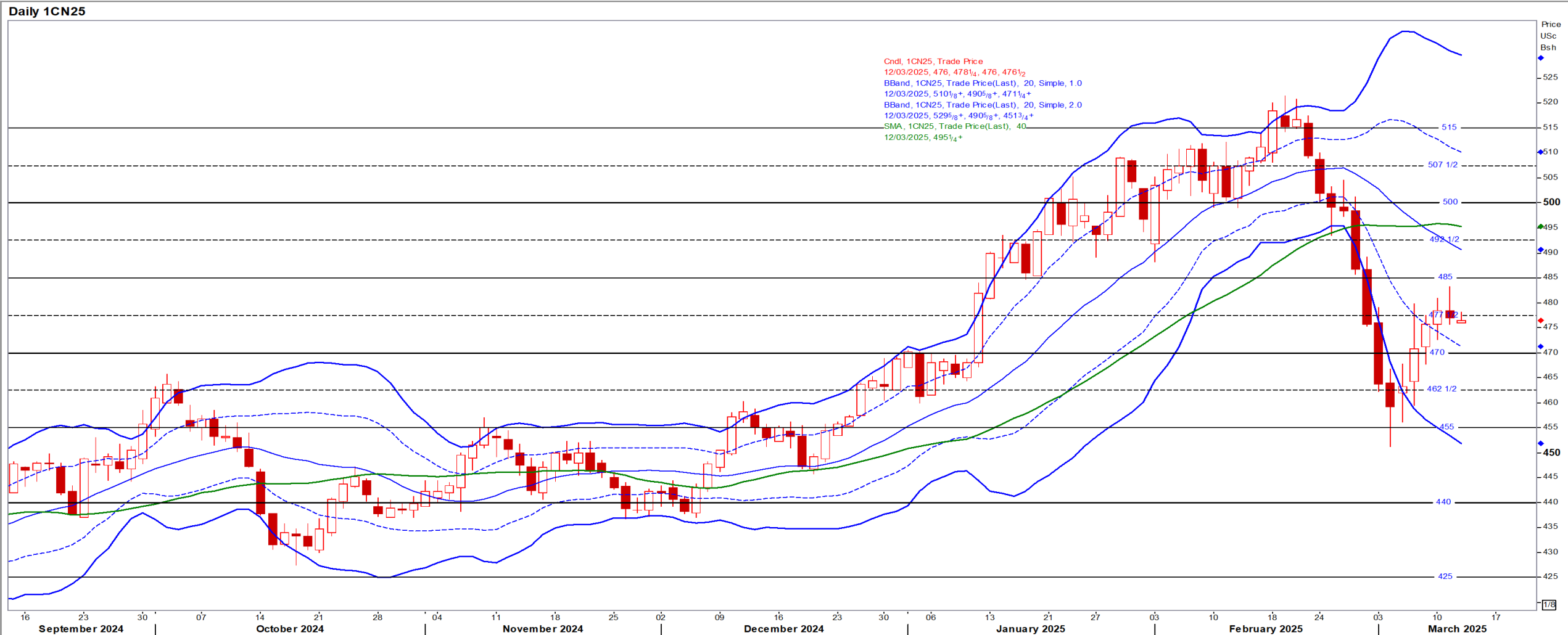
USD/ZAR Weekly: Bullish < R18.30

- ZAR edged higher on a weak USD amid global and domestic uncertainty and as investors eyed US inflation for cues into the Fed's rate stance – Reuters
- While stronger than R18.30 the medium-term ZAR is bullish.



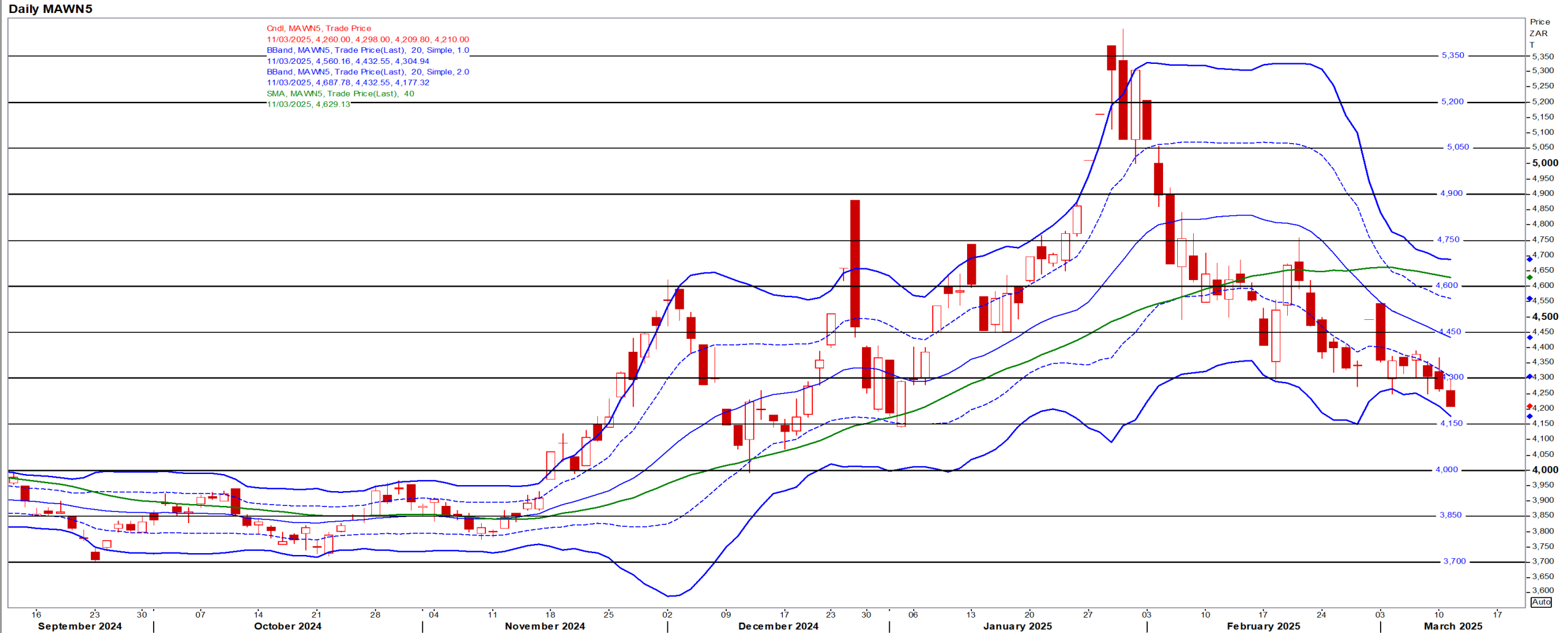
USA Corn

Jul25 Daily: Contract status bullish > \$4.70



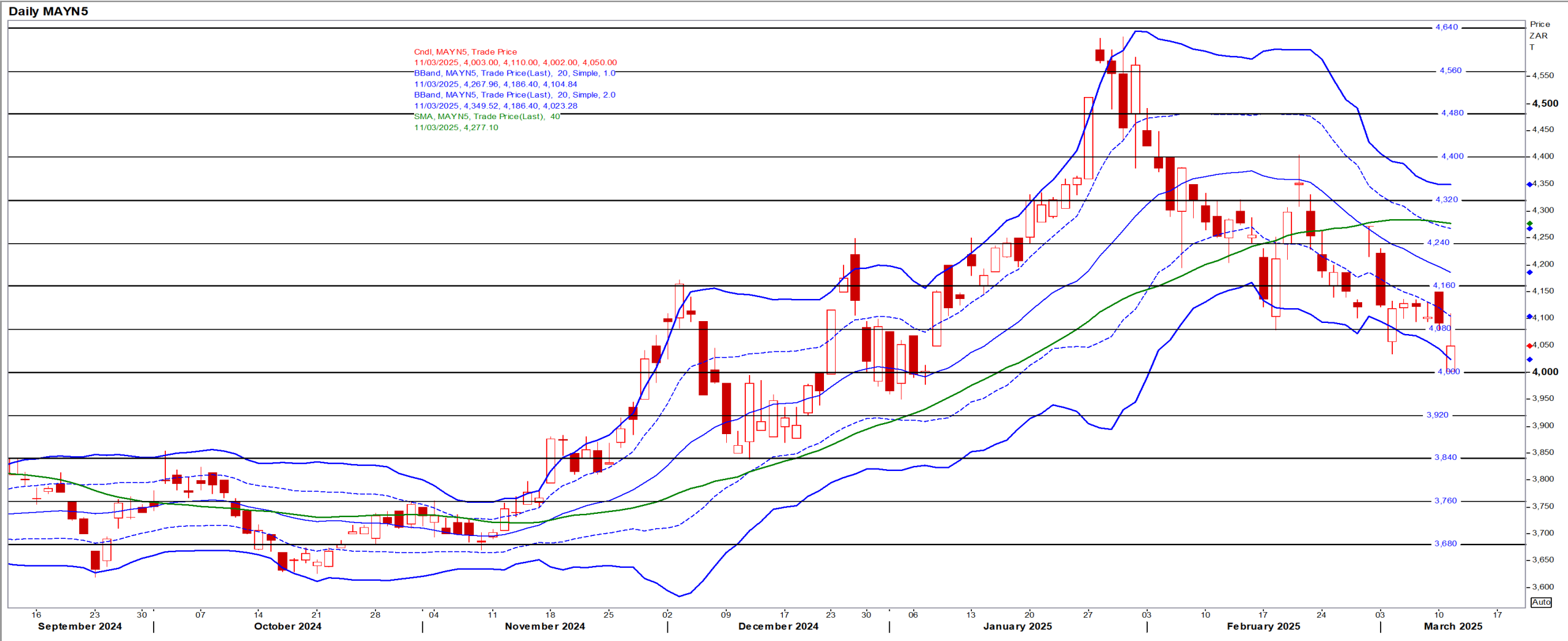
White Maize

Jul25 Daily: Contract status bearish < R4600



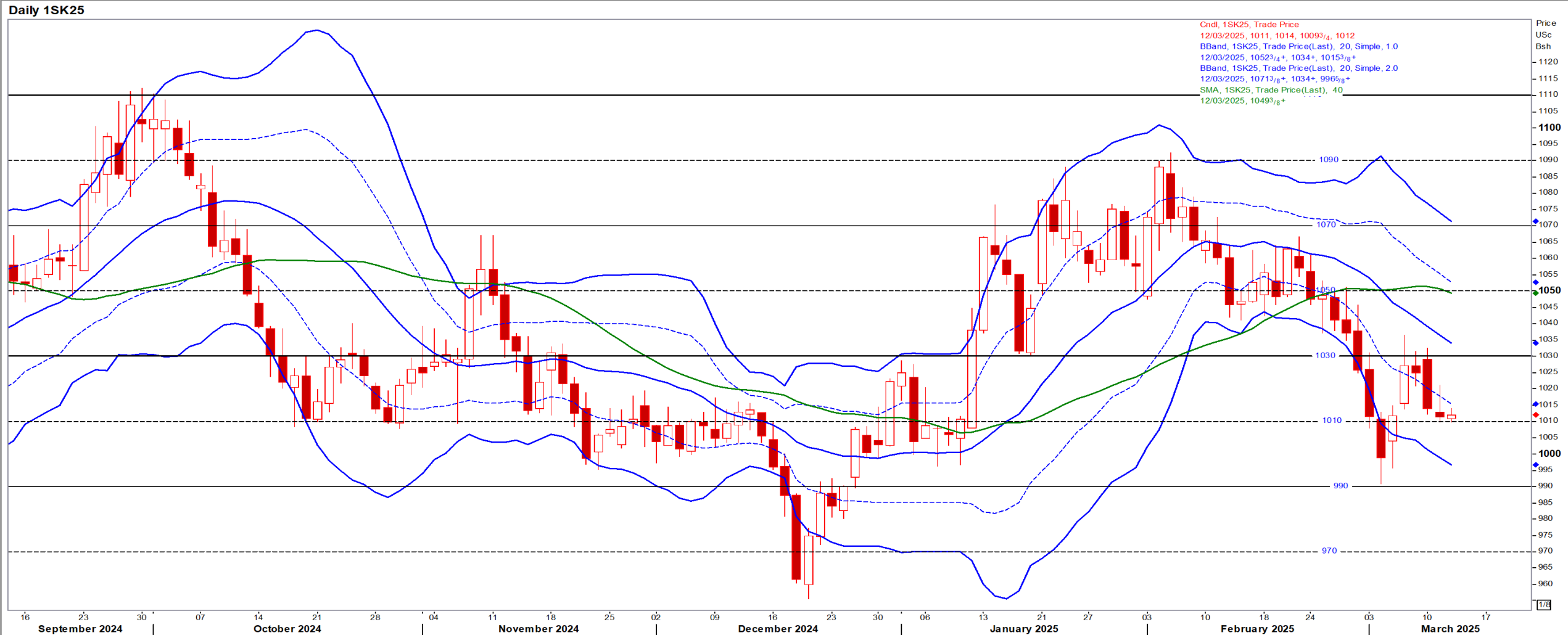
Yellow Maize

Jul25 Daily: Contract status bearish < R4160



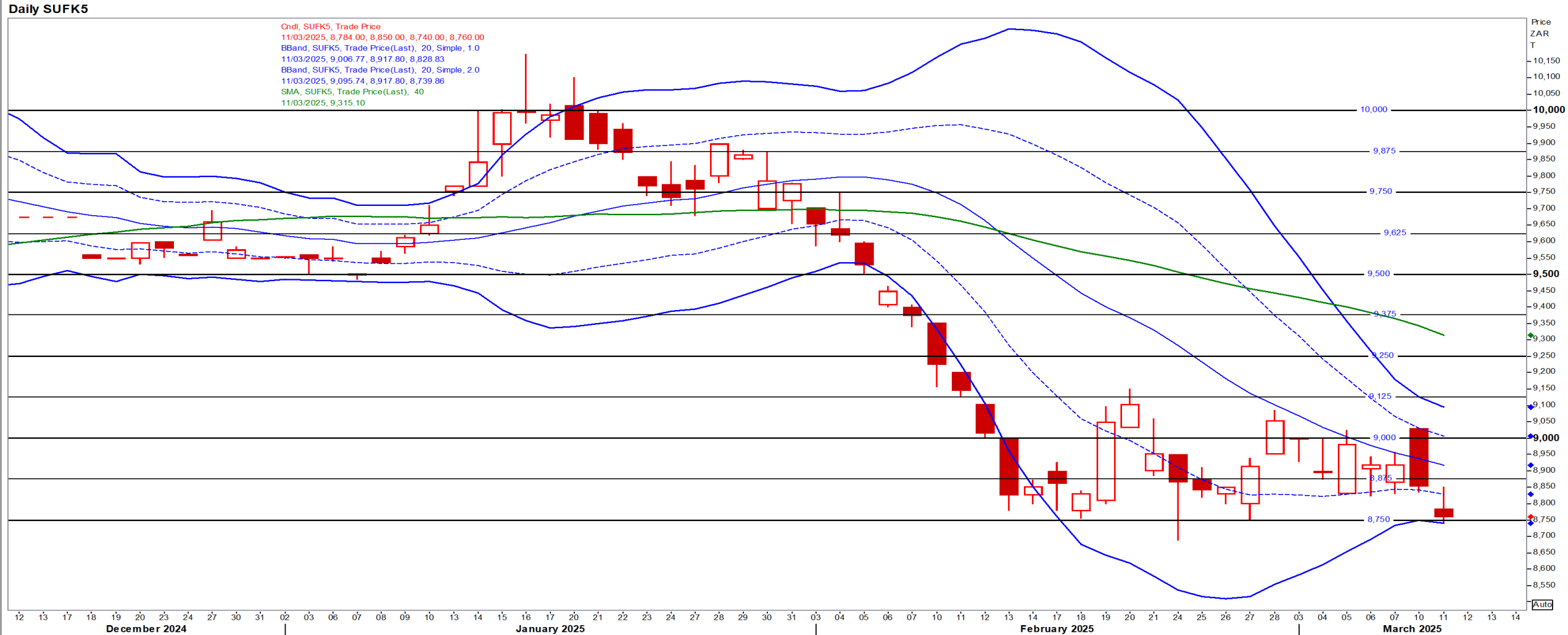
USA Soya

May25 Daily: Contract status bearish < \$10.30



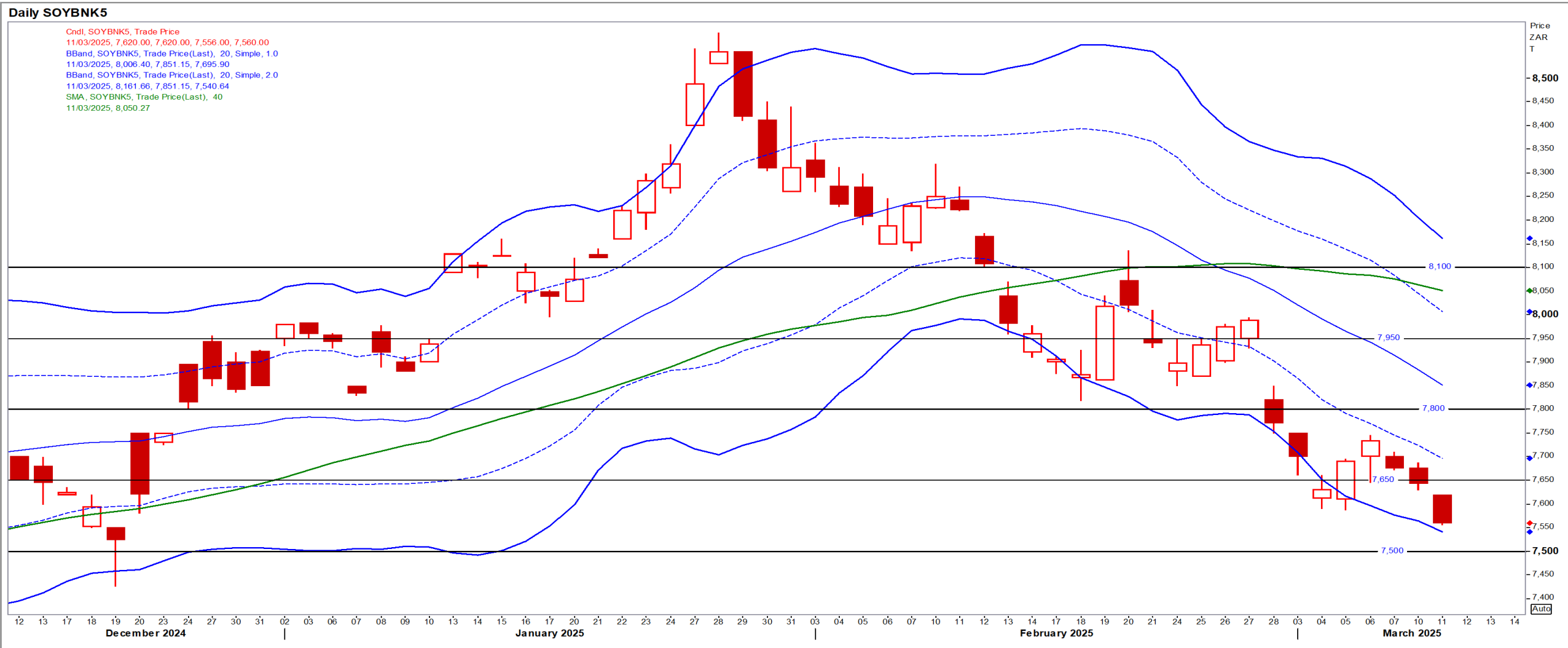
Suns

May25 Daily: Contract status very bearish < R9500



SA Soya

May25 Daily: Contract status very bearish < R7800



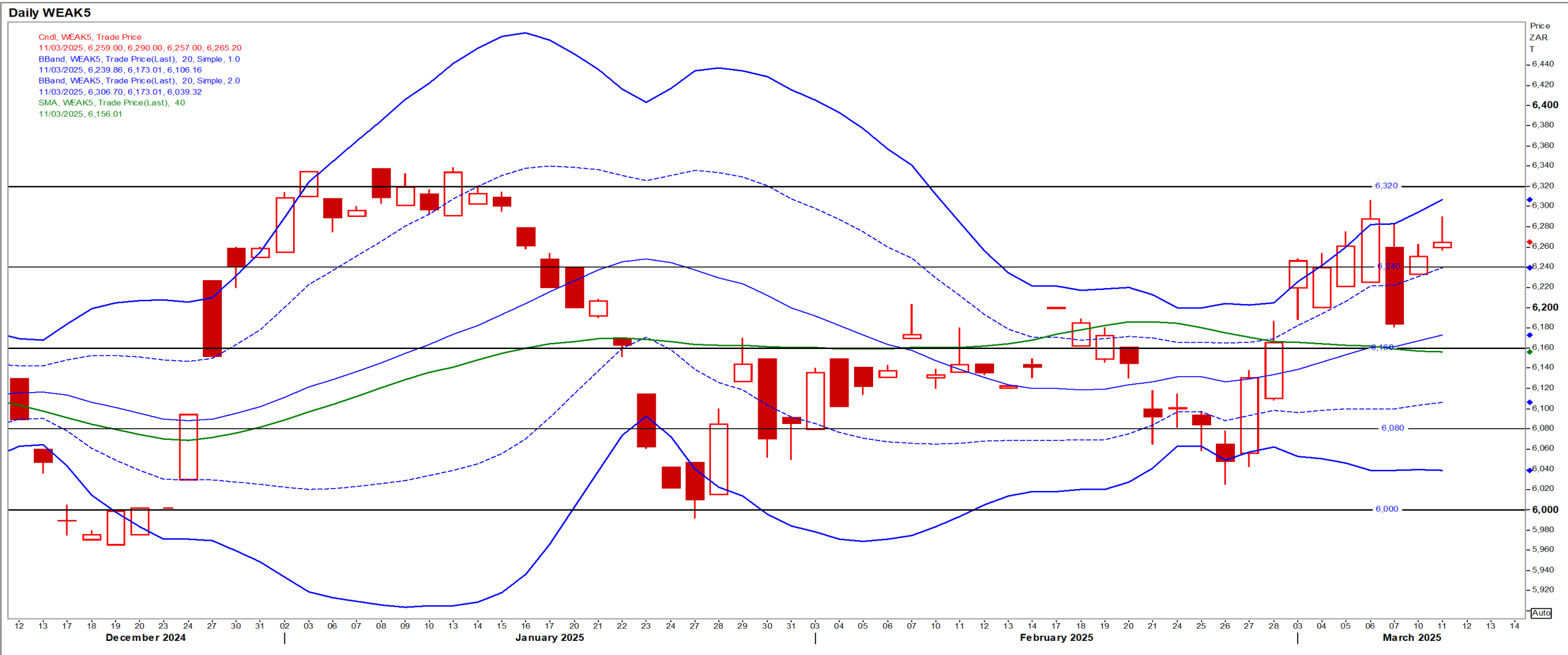
US KANSAS Wheat

May25 Daily: Contract very bearish < \$6.00



SA Wheat

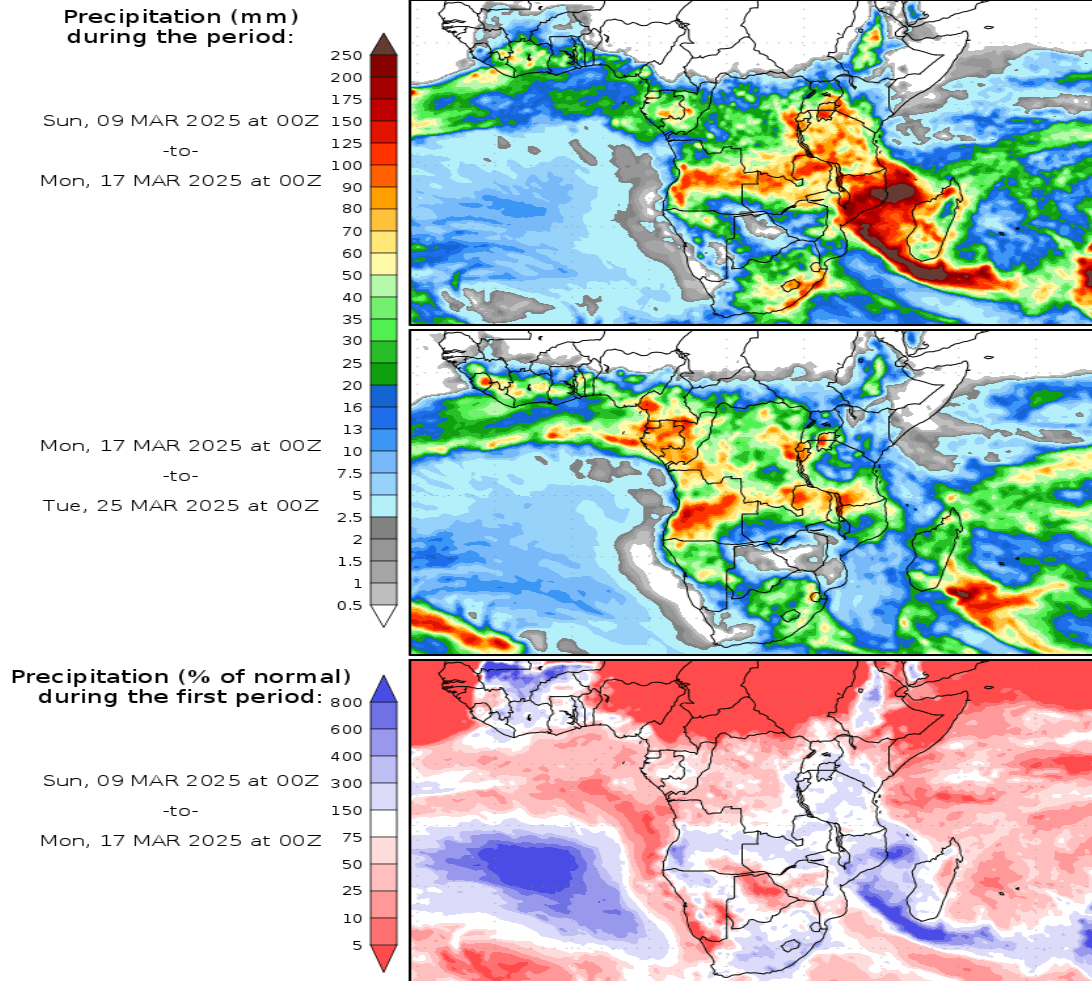
May25 Daily: Contract status very bullish > R6160



Weather

SA Medium-term Precipitation Forecasts

Precipitation Forecasts



Precipitation forecasts from the National Centers for Environmental Prediction.
Normal rainfall derived from Xie-Arkin (CMAP) Monthly Climatology for 1979-2003.
Forecast Initialization Time: 00Z09MAR2025