

Daily market
Report
06 Mar 25



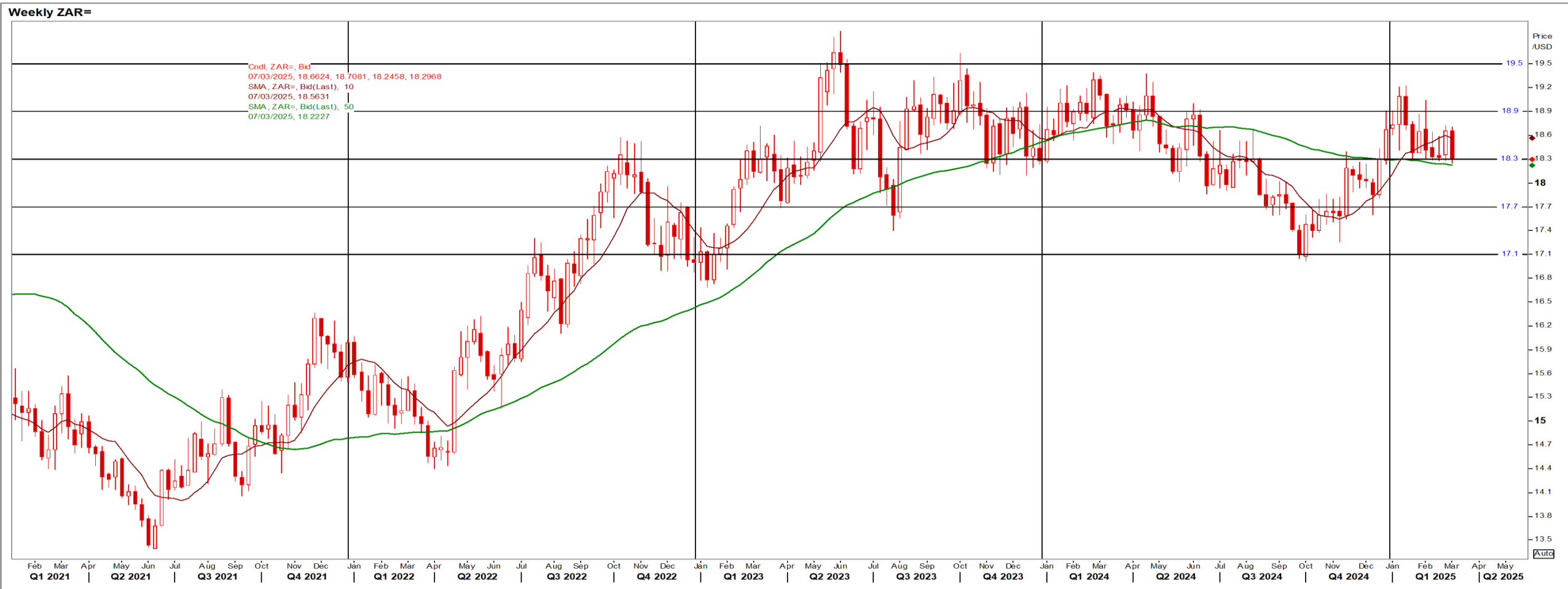
Parity Movements (implied price moves)

USA Movement (Overnight)	Cents	Currencies	06-Mar-25	07:46:13	
CORN CBOT (Jul25)	465.25	1.75	R/\$ last	R 18.2900	-0.0913
SOY CBOT (May25)	1,019.50	14.25	Euro=	\$ 1.0801	0.0090
W1 CBOT (May25)	552.75	9.25	GOLD	\$ 2,919	-0.1400
W2 KCBT (May25)	560.00	5.75	BRENT	\$ 69.67	-0.94
BlackSea Wheat (Near)	217.00	0.00			
Index Change					
Maize (Jul25)	3,350	R -4.06	Wheat CBOT (May25)	3,715	R 43.93
Soya (May25)	6,851	R 62.04	Wheat Kansas (May25)	3,763	R 20.05
BlackSea Wheat Near	3,969	R -19.81	RAND EFFECT ON WHEAT PARITY	3,725	-R 18.59

South African Rand (ZAR)

USD/ZAR Weekly: Bearish > R18.30

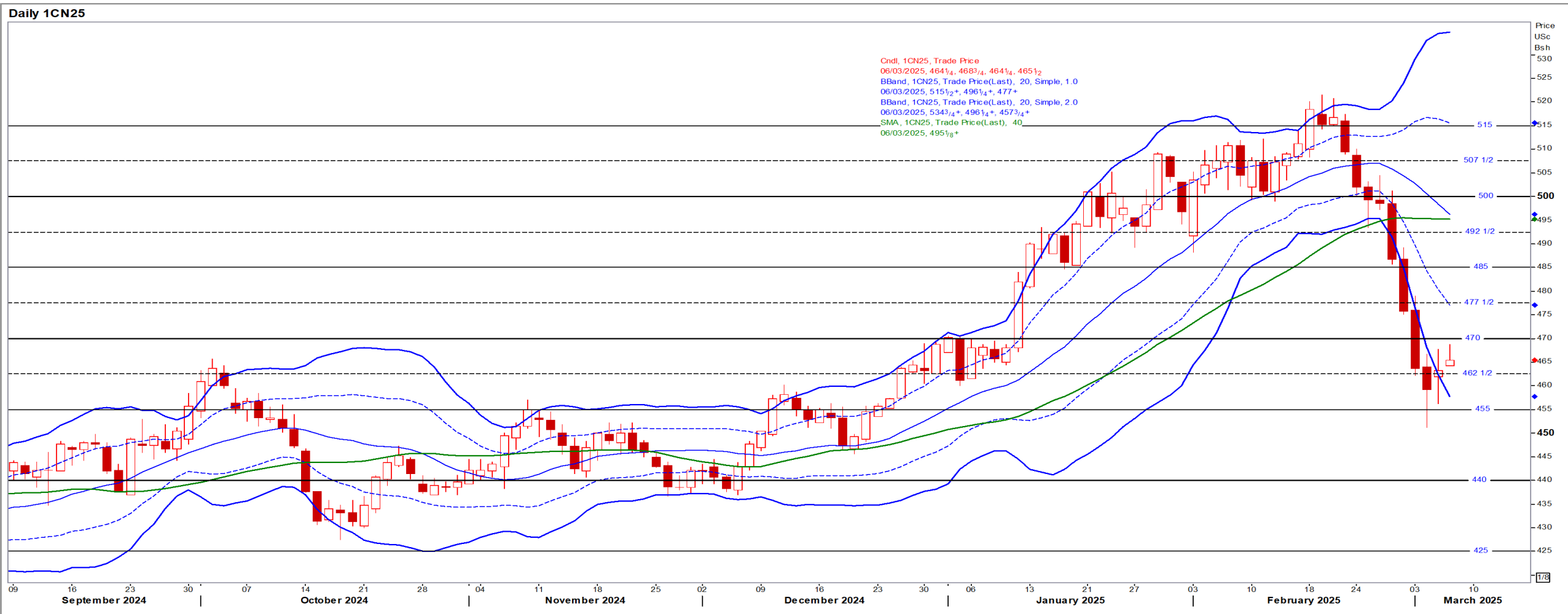
- ZAR capitalised on pressure on the USD as Trump's policies that seem to accelerate the global business cycle towards a downturn are digested – Reuters
- While weaker than R18.30 the medium-term ZAR is bearish.



USA Corn

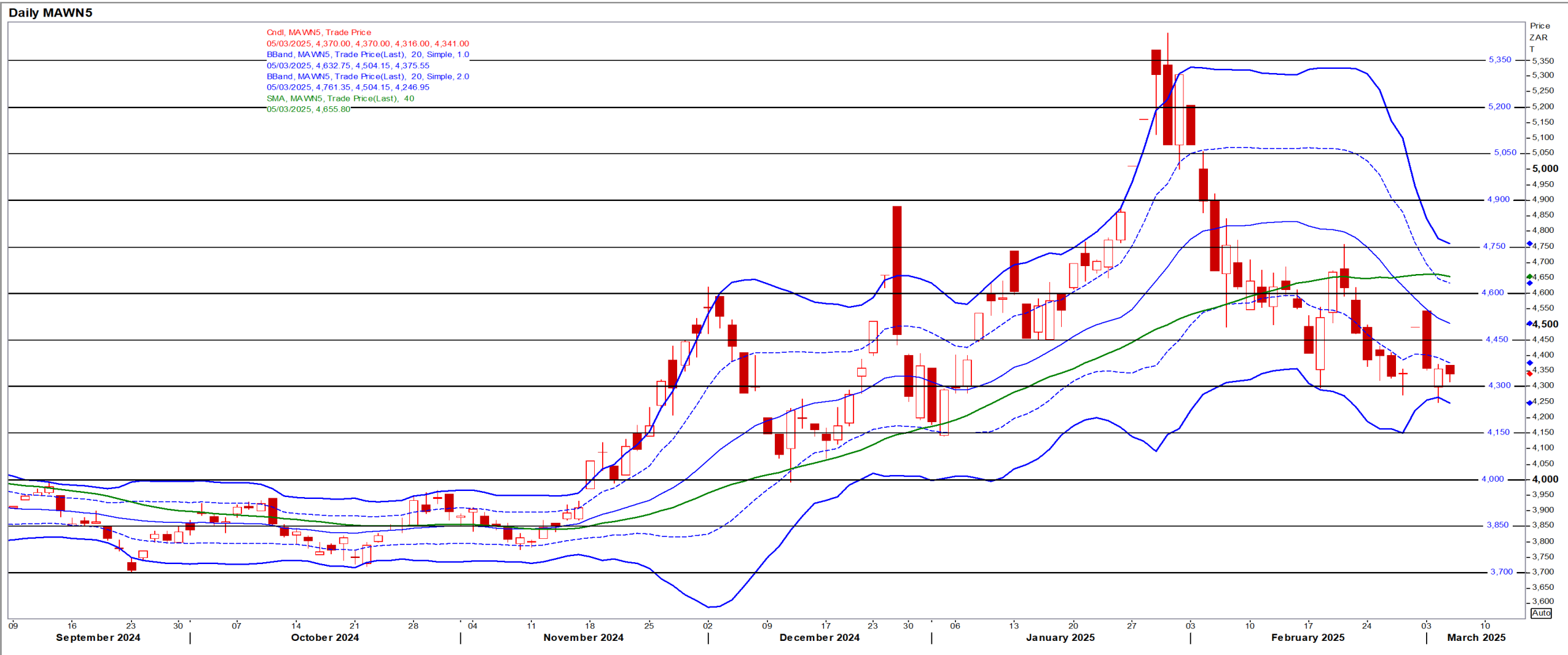
Jul25 Daily: Contract status bearish < \$4.70

- Corn, beans & wheat gained ground as agricultural markets are supported by indications that US tariffs against Canada/Mexico may be reduced – Reuters



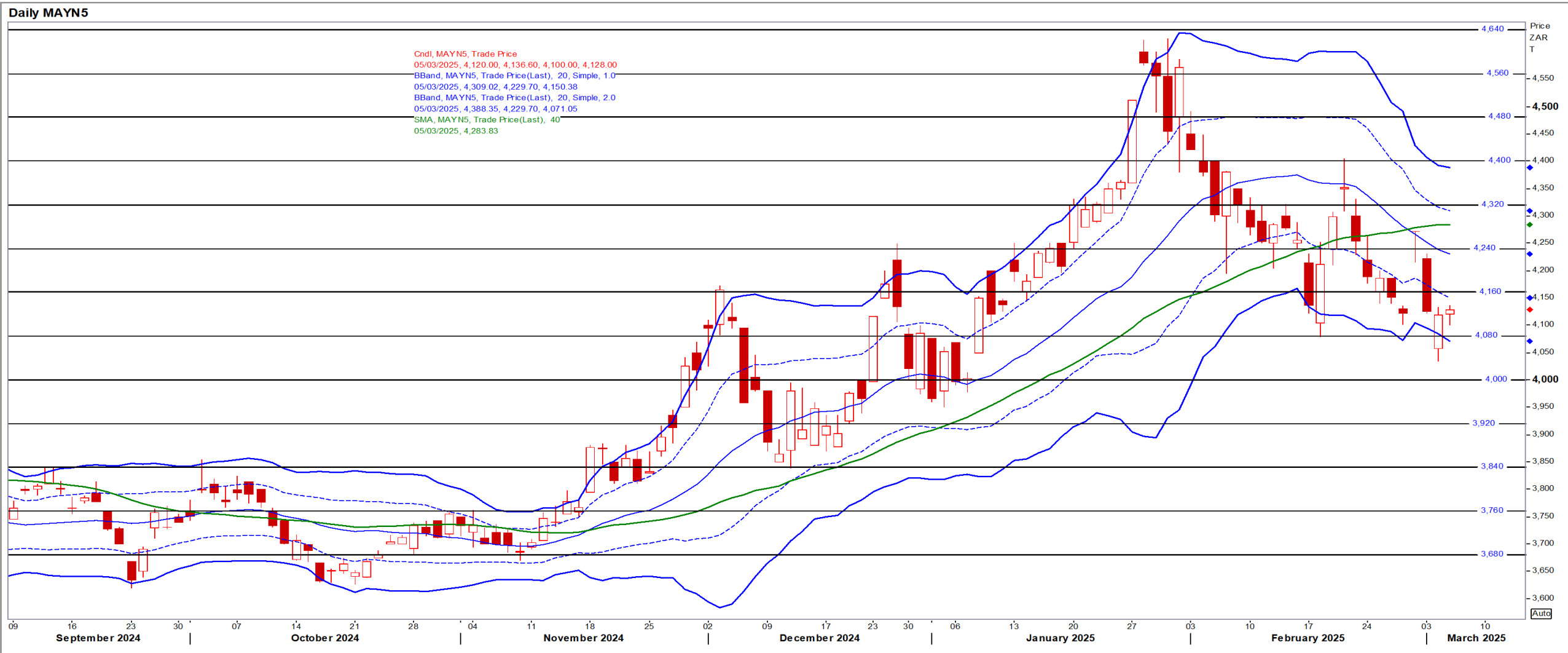
White Maize

Jul25 Daily: Contract status bearish < R4600



Yellow Maize

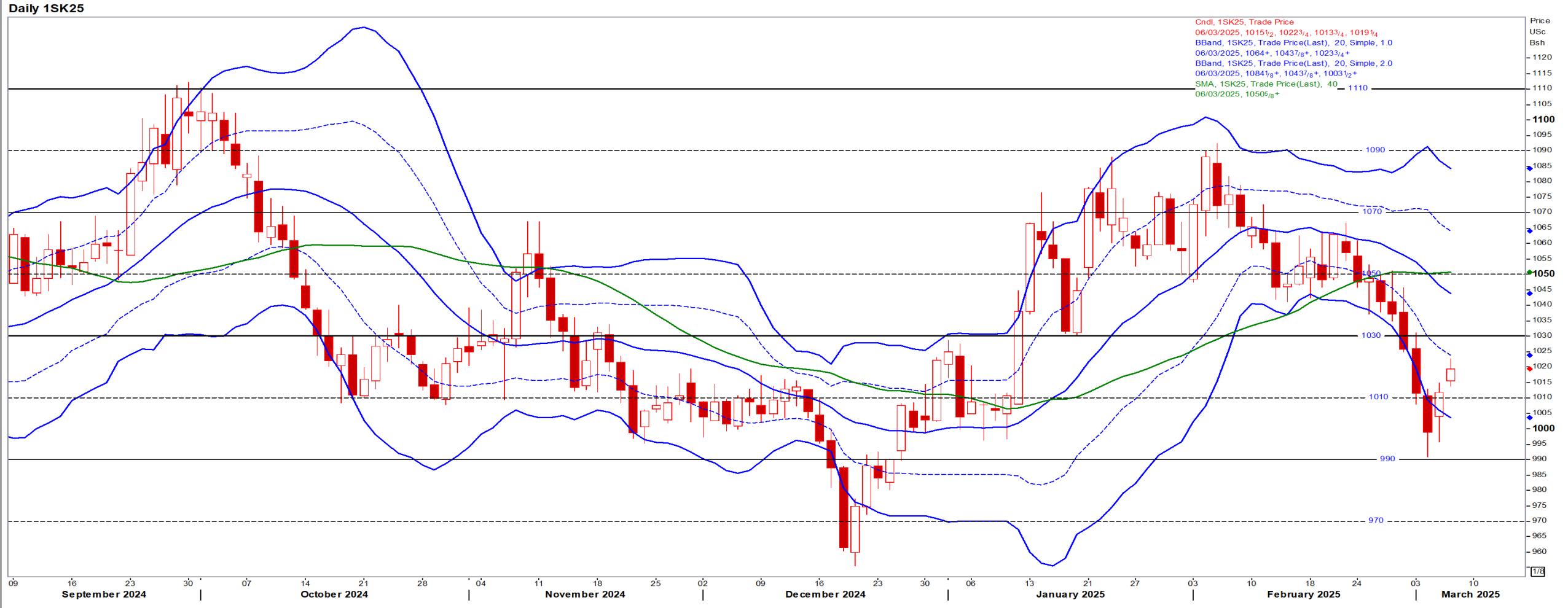
Jul25 Daily: Contract status bearish < R4160



USA Soya

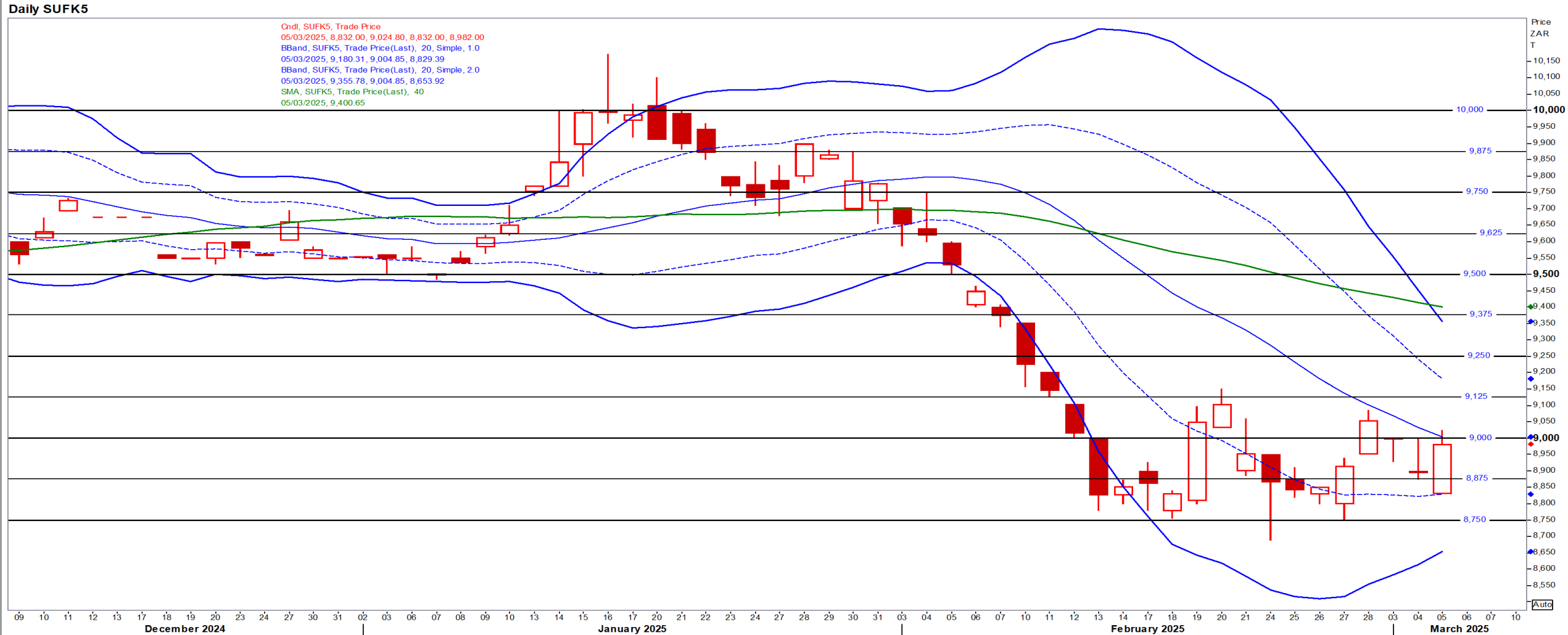
May25 Daily: Contract status bearish < \$10.30

- Corn, beans & wheat gained ground as agricultural markets are supported by indications that US tariffs against Canada/Mexico may be reduced – Reuters



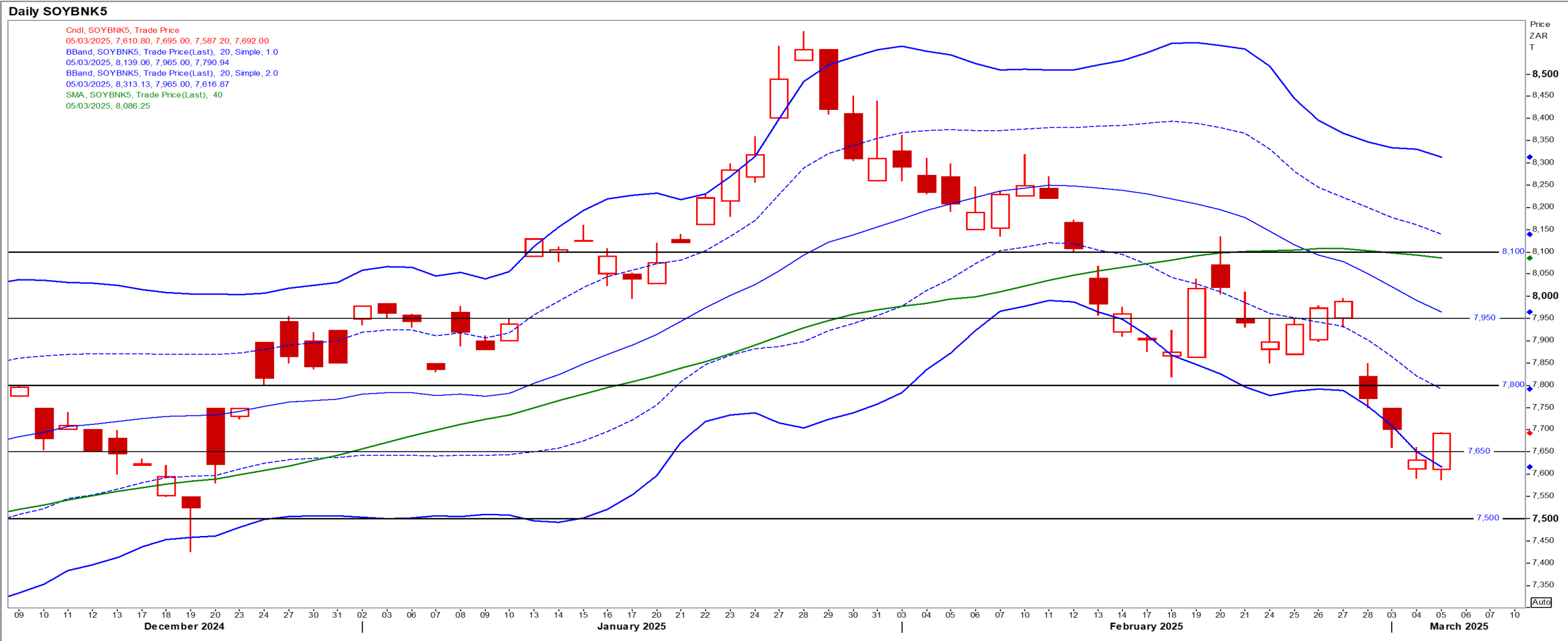
Suns

May25 Daily: Contract status very bearish < R9500



SA Soya

May25 Daily: Contract status very bearish < R7800



US KANSAS Wheat

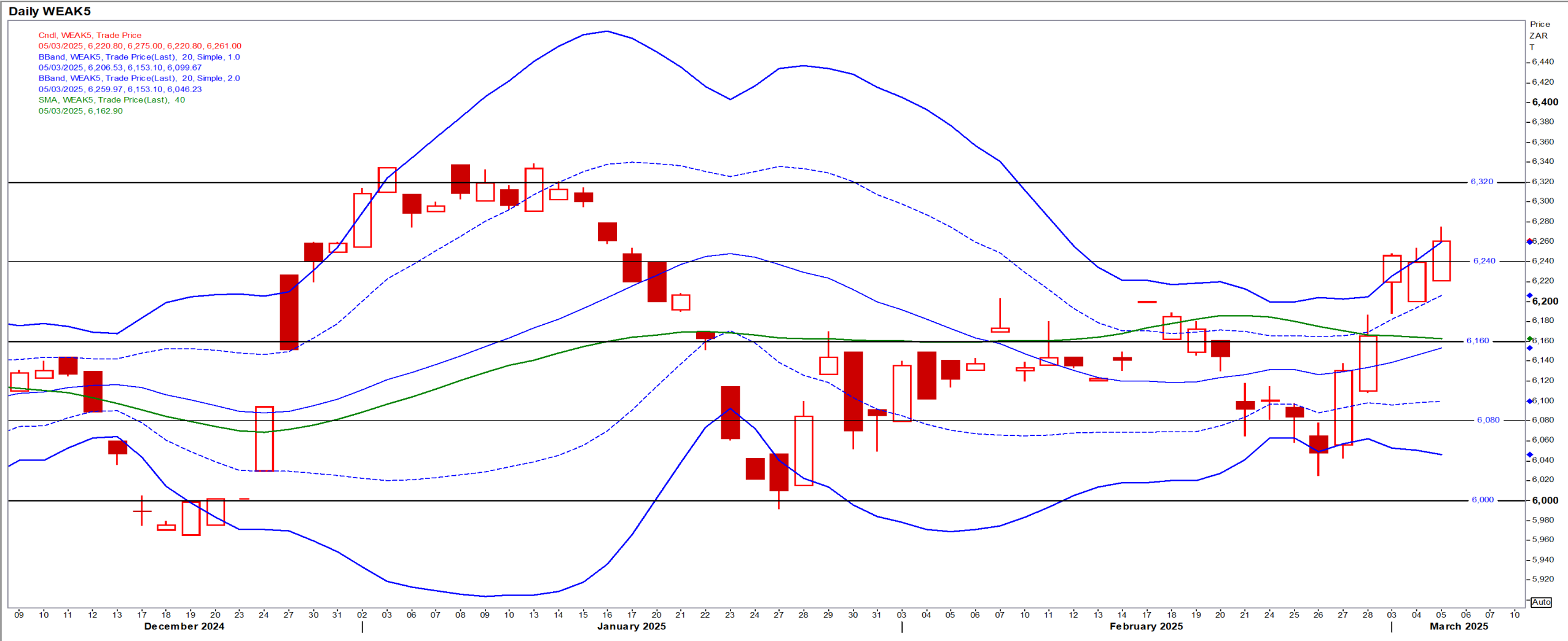
May25 Daily: Contract very bearish < \$6.00

- Corn, beans & wheat gained ground as agricultural markets are supported by indications that US tariffs against Canada/Mexico may be reduced – Reuters



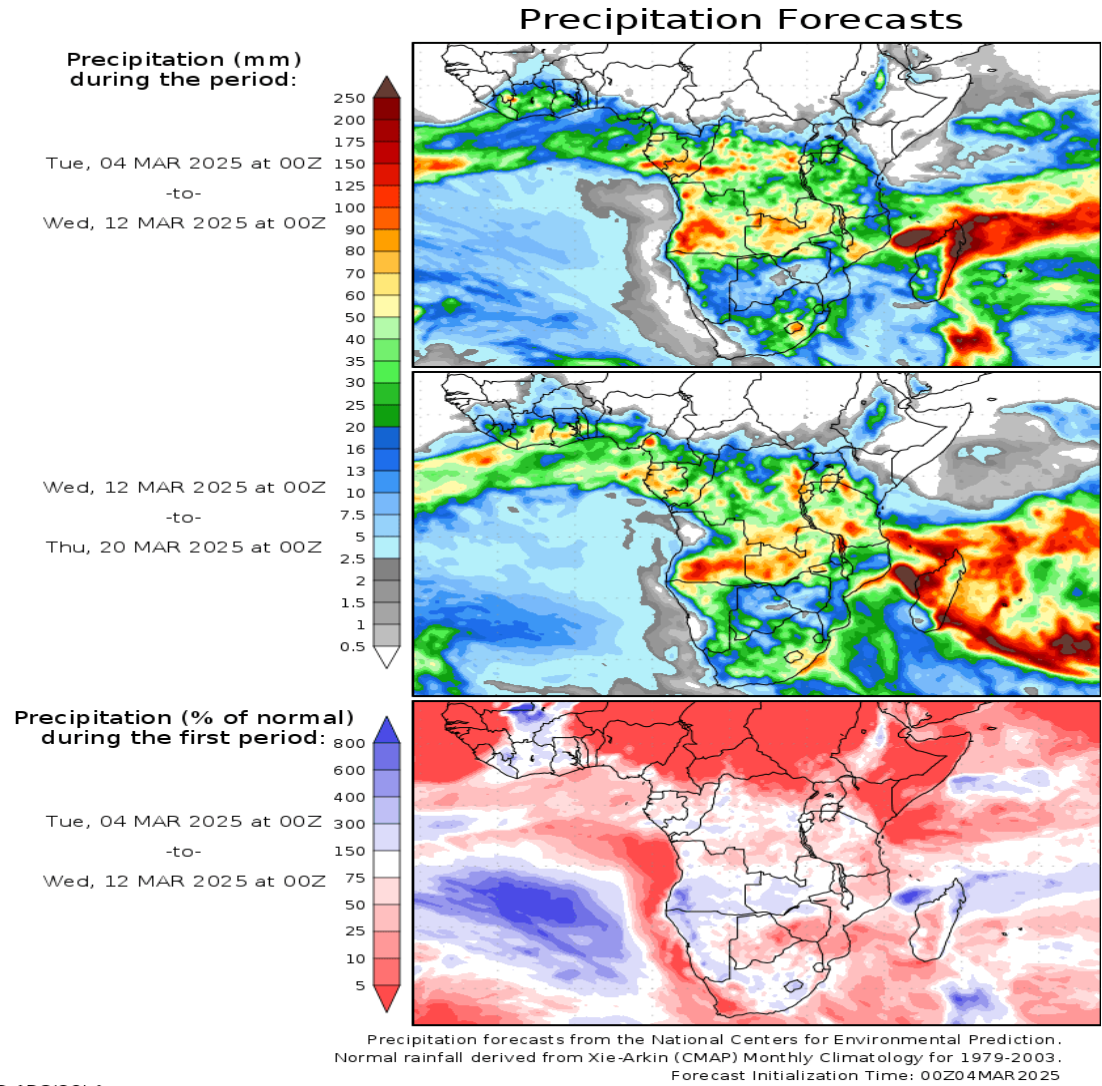
SA Wheat

May25 Daily: Contract status very bullish > R6160



Weather

SA Medium-term Precipitation Forecasts



GRADS/COLA