

Daily market  
Report  
20 Feb 25



# Parity Movements (implied price moves)

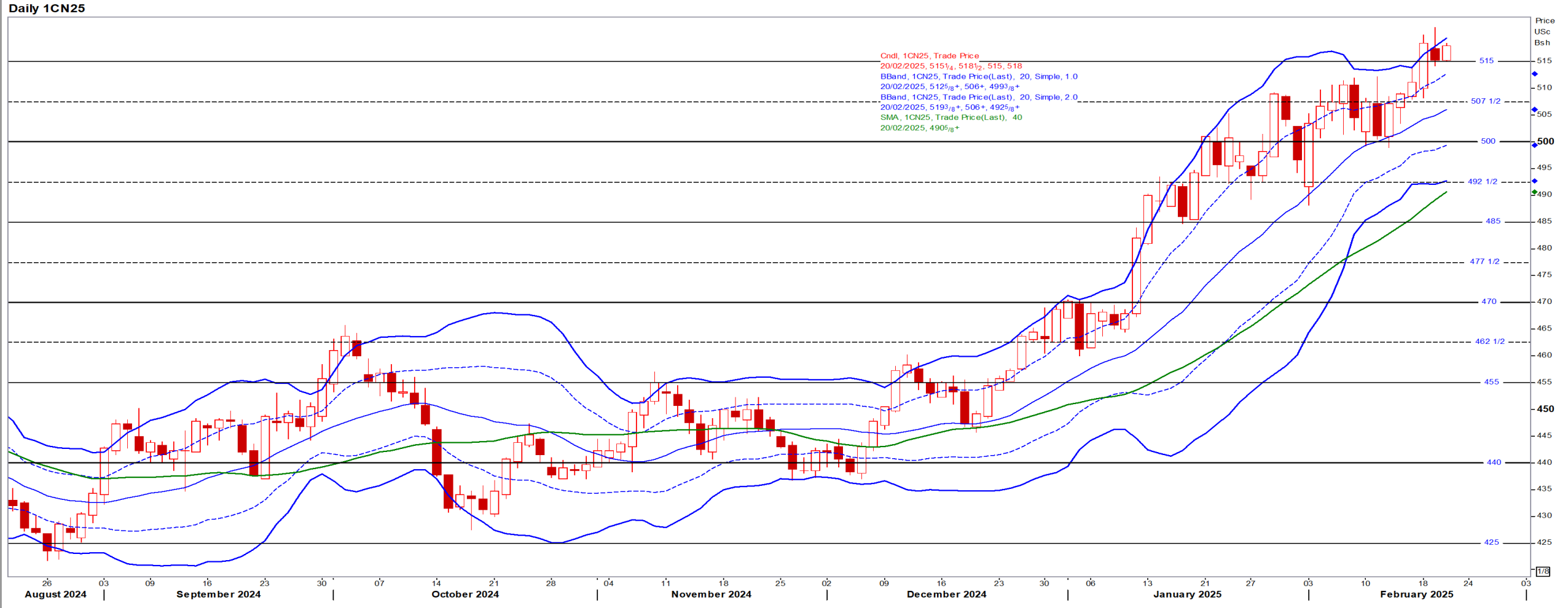
USA Movement (Overnight)		Cents	Currencies	20-Feb-25	07:58:51
<b>CORN CBOT (Jul25)</b>	518.00	-1.00	R/\$ last	R 18.5063	0.0838
<b>SOY CBOT (May25)</b>	1,056.25	-1.00	Euro=	\$ 1.0427	-0.0001
<b>W1 CBOT (May25)</b>	608.50	-8.25	<b>GOLD</b>	\$ 2,946	0.5600
<b>W2 KCBT (May25)</b>	632.50	-5.25	<b>BRENT</b>	\$ 75.84	-0.55
<b>BlackSea Wheat (Near)</b>	230.00	0.00			
<b>Index Change</b>					
<b>Maize (Jul25)</b>	3,774	R 9.84	<b>Wheat CBOT (May25)</b>	4,138	R -37.11
<b>Soya (May25)</b>	7,182	R 25.75	<b>Wheat Kansas (May25)</b>	4,301	R -16.06
<b>BlackSea Wheat Near</b>	4,256	R 19.27	<b>RAND EFFECT ON WHEAT PARITY</b>	4,337	R 19.64



# USA Corn

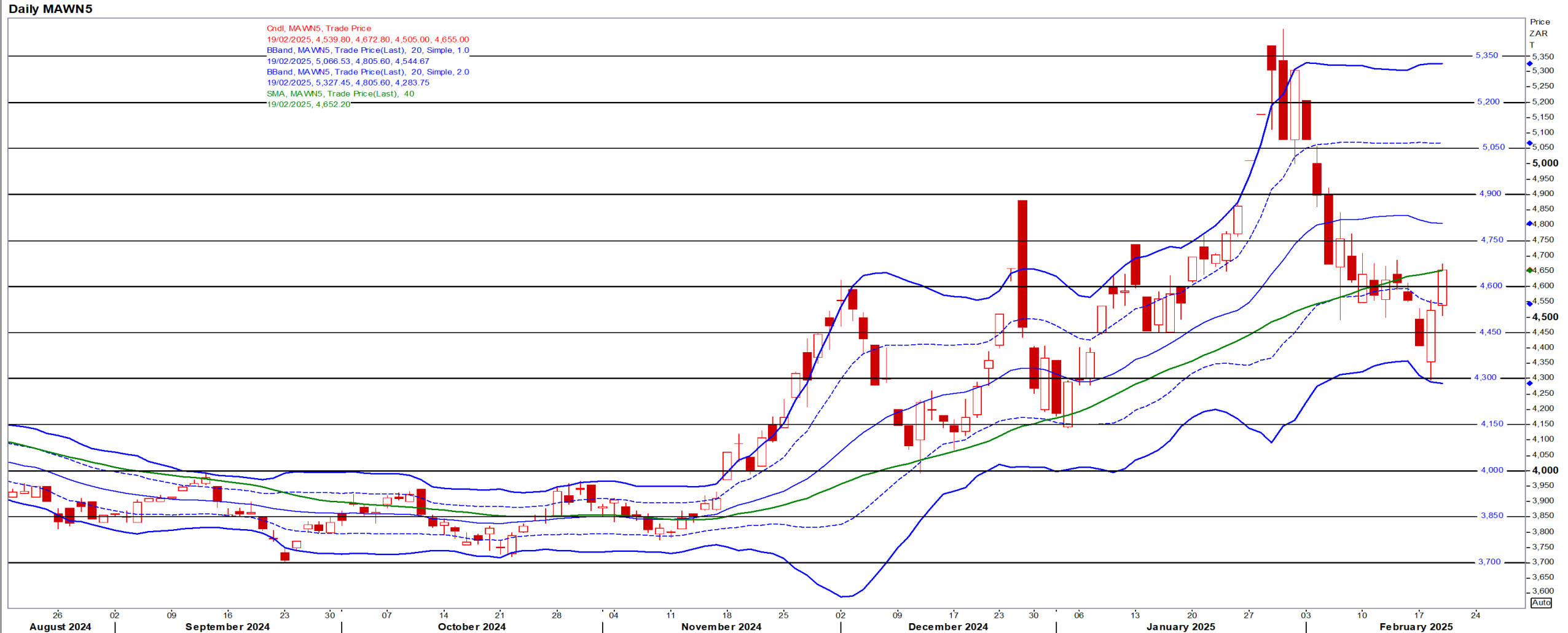
Jul25 Daily: Contract status very bullish > \$4.70

- Corn and beans recouped some losses although concerns over Trump's threats for more tariffs kept traders on edge – Reuters



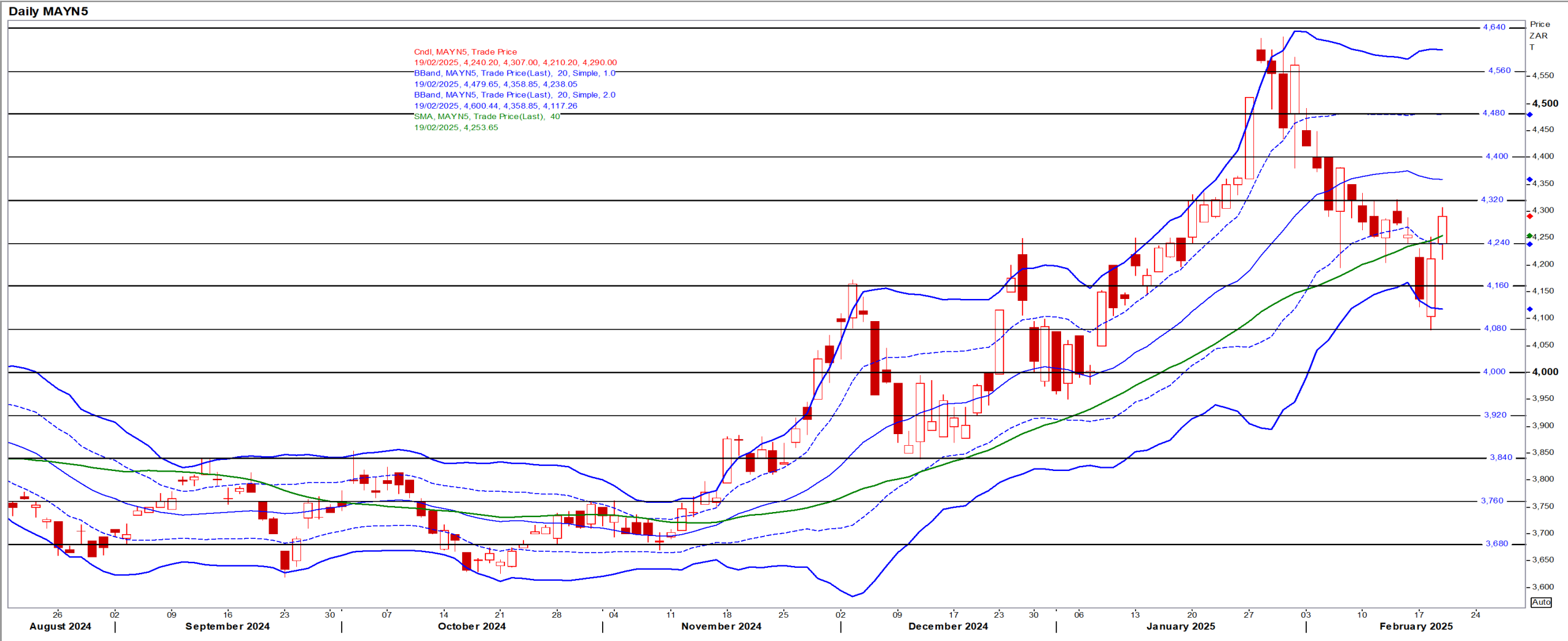
# White Maize

Jul25 Daily: Contract status bullish > R4600



# Yellow Maize

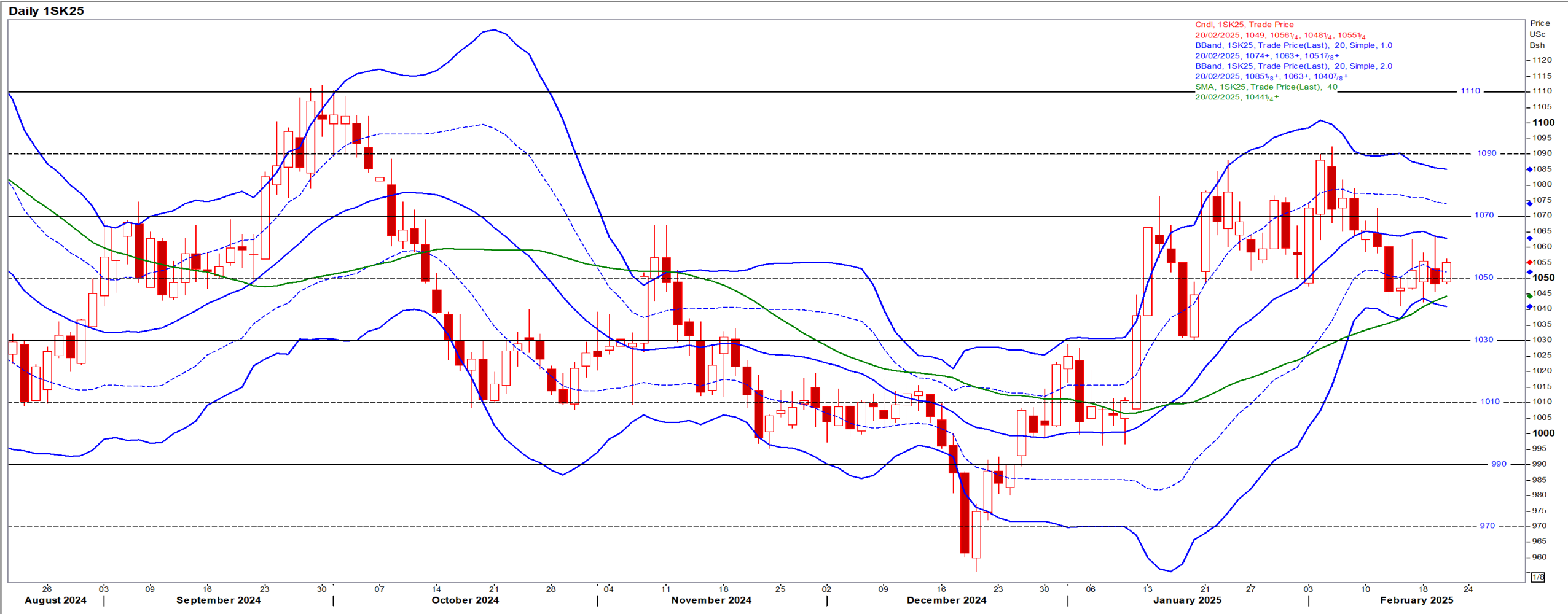
Jul25 Daily: Contract status bullish > R4160



# USA Soya

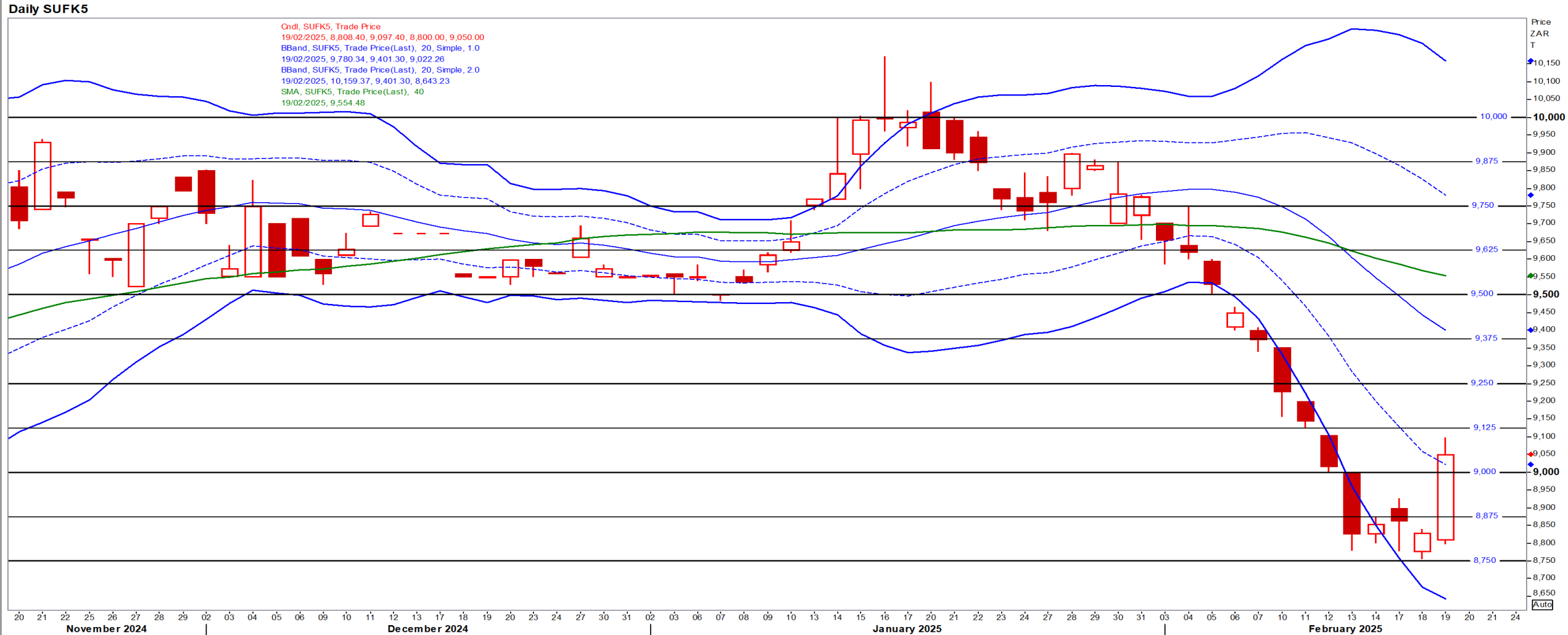
May25 Daily: Contract status bullish > \$10.30

- In Brazil drought has delayed corn planting and slashed the size of its beans to 171.3m tons, less than the 172.4m forecast in January – Reuters



# Suns

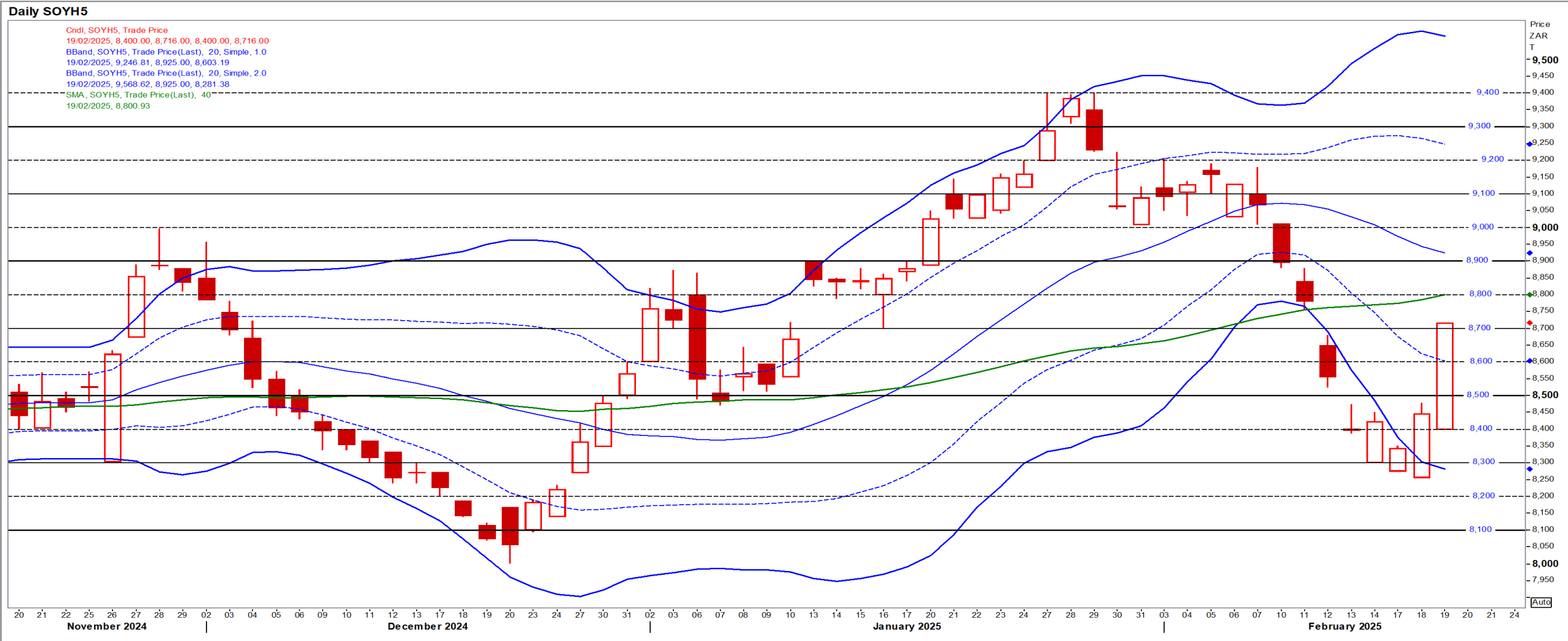
May25 Daily: Contract status very bearish < R9500





# SA Soya

Mar25 Daily: Contract status very bearish < R8900 [No Refinitiv graph for May SoyB]



# US KANSAS Wheat

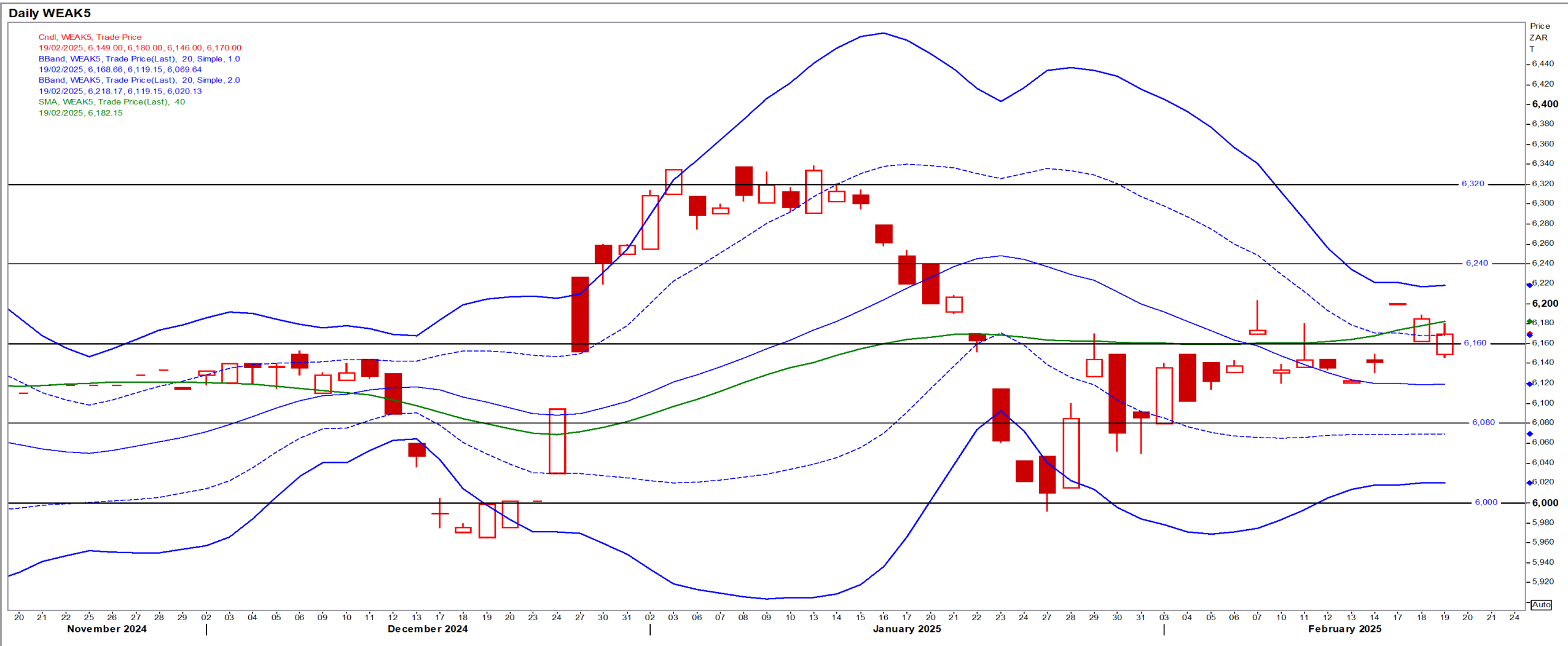
May25 Daily: Contract bullish > \$5.80

- Wheat settled lower on Wednesday on profit-taking after the market reached an eight-month high – Reuters



# SA Wheat

May25 Daily: Contract status bullish > R6160



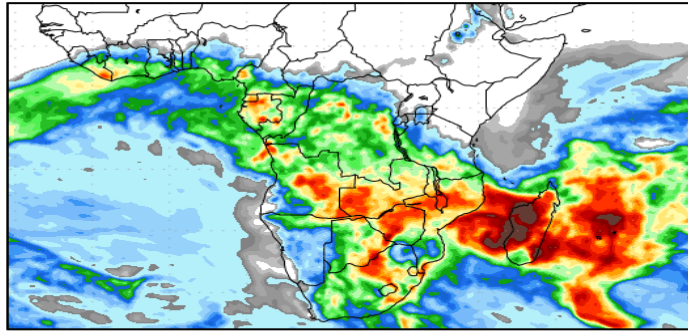
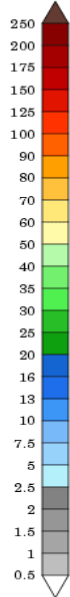
# Weather

## SA Medium-term Precipitation Forecasts

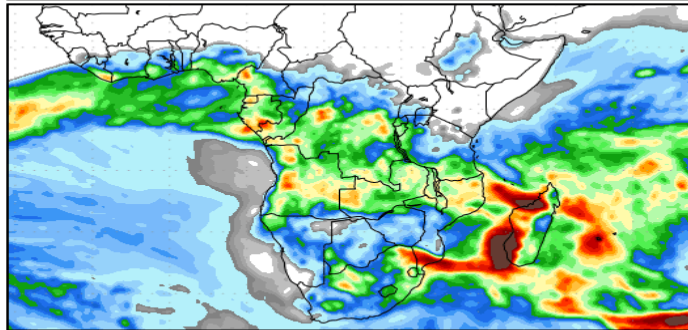
### Precipitation Forecasts

Precipitation (mm)  
during the period:

???, 18 FEB 2025 at 00Z  
-to-  
???, 26 FEB 2025 at 00Z

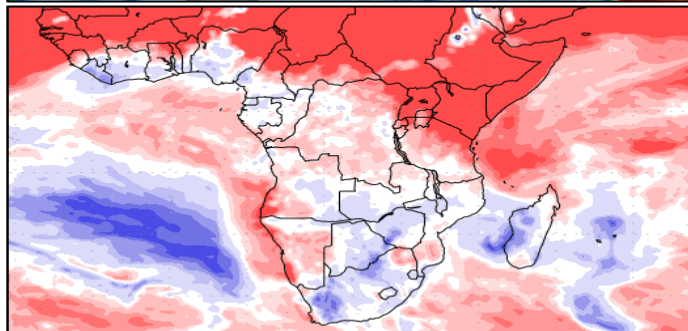
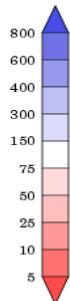


???, 26 FEB 2025 at 00Z  
-to-  
???, 06 MAR 2025 at 00Z



Precipitation (% of normal)  
during the first period:

???, 18 FEB 2025 at 00Z  
-to-  
???, 26 FEB 2025 at 00Z



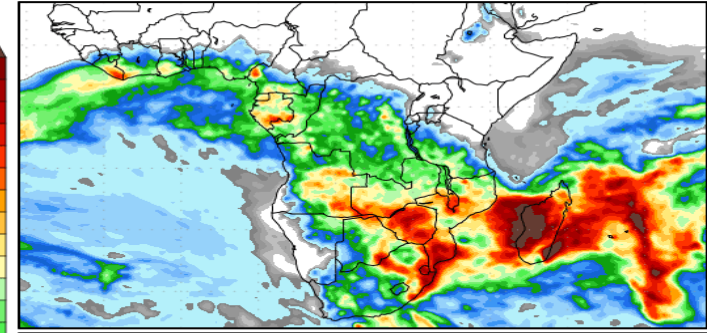
Precipitation forecasts from the National Centers for Environmental Prediction.  
Normal rainfall derived from Xie-Arkin (CMAP) Monthly Climatology for 1979-2003.  
Forecast Initialization Time: 00Z18FEB2025

GrADS/COLA

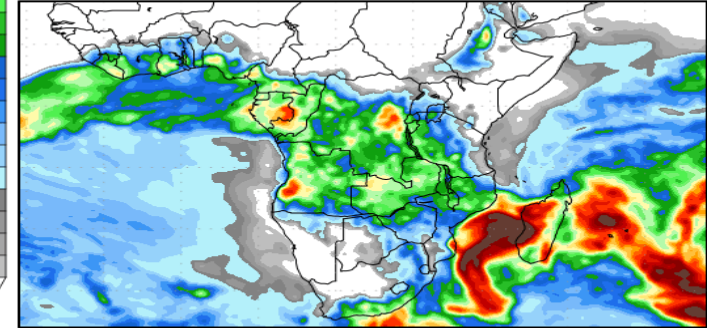
### Precipitation Forecasts

Precipitation (mm)  
during the period:

???, 19 FEB 2025 at 00Z  
-to-  
???, 27 FEB 2025 at 00Z

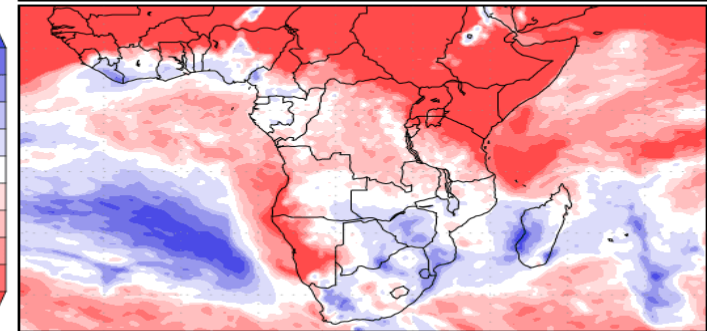
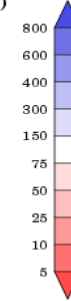


???, 27 FEB 2025 at 00Z  
-to-  
???, 07 MAR 2025 at 00Z



Precipitation (% of normal)  
during the first period:

???, 19 FEB 2025 at 00Z  
-to-  
???, 27 FEB 2025 at 00Z



Precipitation forecasts from the National Centers for Environmental Prediction.  
Normal rainfall derived from Xie-Arkin (CMAP) Monthly Climatology for 1979-2003.  
Forecast Initialization Time: 00Z19FEB2025

